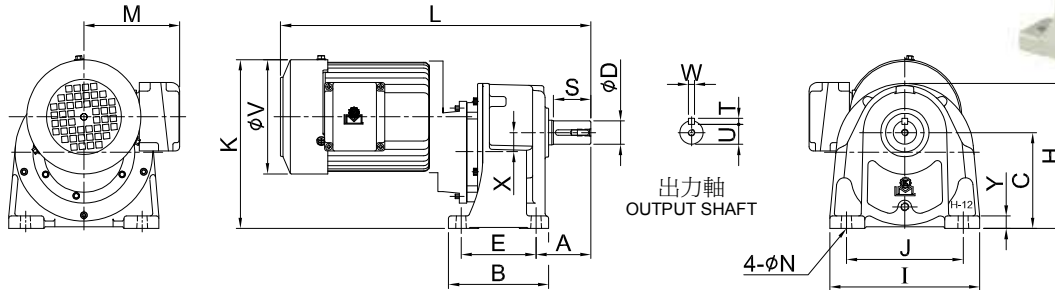


■ 臥式多速比減速機 Horizontal High Reduction Gear Reducer

■ MODEL : SHL



最大容許扭力 Max. Permissible Torque					
型號 Model No.	11	12	13	14	15
扭力 Torque kg-m	10	20	40	75	110

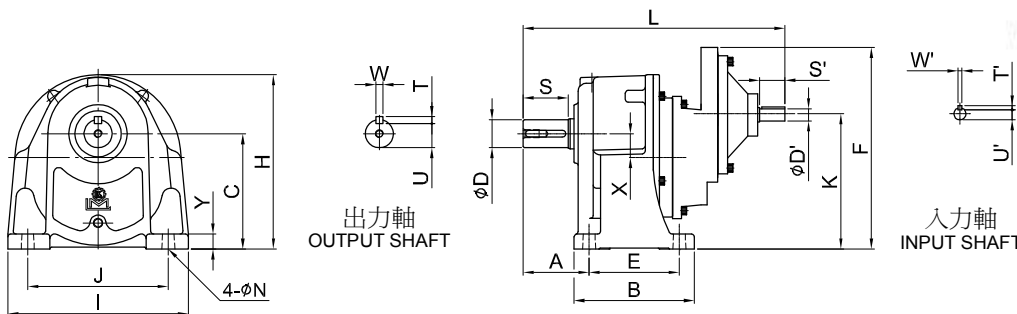
unit: mm

馬力 Horse Power	型號 Model	減速比 Ratio	A	E	B	J	I	C	H	Y	N	X	L	M	V	K	出力軸 Output Shaft					重量 Weight (KG)
																	D	S	W	T	U	
1/8HP (0.1kW)	11	1/200~1/2000	57	65	90	130	155	95	145	13	9	17	350	112	123	180	22	40	7	7	18	12
1/4HP (0.2kW)	12		66	90	120	140	180	115	175	15	11	23	375	118	137	210	28	45	7	7	2	
1/2HP (0.4kW)	13		78	130	165	170	210	130	205	18	13	26	425	109	151	240	32	55	10	8	27	1
1HP (0.75kW)	14		95	150	195	210	255	150	240	20	15	28	490	114	163	275	40	65	10	8	35	4
2HP (1.5kW)	15	1/280~1/700	112	170	225	265	330	185	295	25	19	38	565	127	181	295	50	80	14	9	44.	

注：多速比減速機以定轉速設計，請參考齒箱最大容許扭力。
NOTE: This multistage gear reducer is designed to rotate at fixed speed. Please refer to the maximum allowable torque of the gear box.

■ 臥式多速比雙軸減速機 Horizontal High Gear Reducer

■ MODEL : SHDL



unit: mm

馬力 Horse Power	型號 Model	減速比 Ratio	A	E	B	J	I	C	H	Y	N	X	K	L	F	出力軸 Output Shaft					入力軸 Input Shaft					重量 Weight (KG)
																D	S	W	T	U	D'	S'	W'	T'	U'	
1/8HP (0.1kW)	11	1/200~1/2000	57	65	90	130	155	95	145	13	9	17	114	237	175	22	40	7	7	18	11	20	4	4	8.5	
1/4HP (0.2kW)	12		66	90	120	140	180	115	175	15	11	23	137	263	205	28	45	7	7	24	12	28	4	4	9	
1/2HP (0.4kW)	13		78	130	165	170	210	130	205	18	13	26	159	315	230	32	55	10	8	27	14	30	5	5	11	1
1HP (0.75kW)	14		95	150	195	210	255	150	240	20	15	28	188	380	265	40	65	10	8	35	19	35	5	5	16	
2HP (1.5kW)	15	1/280~1/700	112	170	225	265	330	185	295	25	19	38	201	432	289	50	80	14	9	44.5	24	40	7	7	20	3

注：多速比減速機以定轉速設計，請參考齒箱最大容許扭力。
NOTE: This multistage gear reducer is designed to rotate at fixed speed. Please refer to the maximum allowable torque of the gear box.