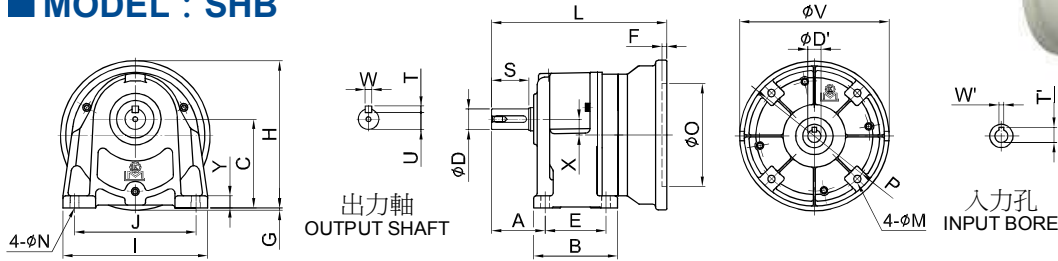


## ■ 臥式馬達自裝式減速機 Horizontal Motor-Driver Reducer

### ■ MODEL : SHB

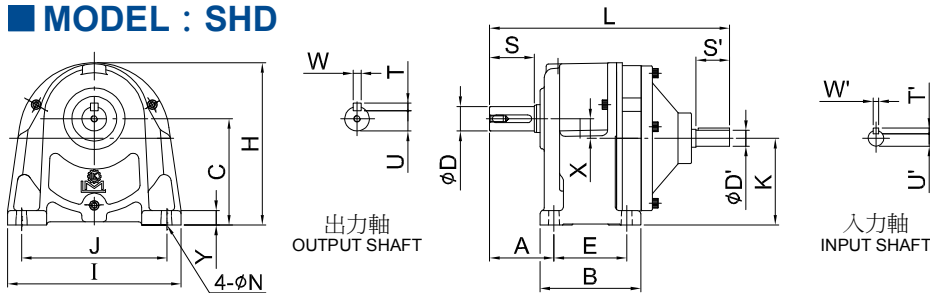


unit: mm

| 馬力<br>Horse Power | 型號<br>Model | 減速比<br>Ratio             | 尺寸 (Dimensions) |     |     |     |     |     |     |    |      |    |    |     |   |     |     |    |     | 輸出軸 Output Shaft |    |    |   |      | 輸入孔 Input Bore |    |      |    | 重量<br>Weight (KG) |
|-------------------|-------------|--------------------------|-----------------|-----|-----|-----|-----|-----|-----|----|------|----|----|-----|---|-----|-----|----|-----|------------------|----|----|---|------|----------------|----|------|----|-------------------|
|                   |             |                          | A               | E   | B   | J   | I   | C   | H   | Y  | G    | N  | X  | L   | F | O   | P   | M  | V   | D                | S  | W  | T | U    | D'             | W' | T'   |    |                   |
| 1/8HP<br>(0.1kW)  | 10          | 1/3~1/50 (1/60~1/200)    | 46              | 40  | 65  | 110 | 135 | 85  | 148 | 12 | 12.4 | 9  | 17 | 161 | 5 | 110 | 130 | 8  | 160 | 18               | 30 | 5  | 5 | 15   | 11             | 4  | 12.8 | 3  |                   |
|                   | 11          | 1/6~1/200                | 57              | 65  | 90  | 130 | 155 | 95  | 158 | 13 | 2.5  | 9  | 17 | 187 | 5 | 110 | 130 | 8  | 160 | 22               | 40 | 7  | 7 | 18   |                |    |      |    |                   |
| 1/4HP<br>(0.2kW)  | 10          | 1/3~1/30 (1/40~1/155)    | 46              | 40  | 65  | 110 | 135 | 85  | 148 | 12 | 12.4 | 9  | 17 | 161 | 5 | 110 | 130 | 8  | 160 | 18               | 30 | 5  | 5 | 15   | 11             | 4  |      |    |                   |
|                   | 11          | 1/3~1/90 (1/95~1/155)    | 57              | 65  | 90  | 130 | 155 | 95  | 158 | 13 | 2.5  | 9  | 17 | 187 | 5 | 110 | 130 | 8  | 160 | 22               | 40 | 7  | 7 | 18   | 11             | 4  | 12.8 | 6  |                   |
|                   | 12          | 1/35~1/200               | 66              | 90  | 120 | 140 | 180 | 115 | 174 | 15 | -    | 11 | 23 | 207 | 5 | 110 | 130 | 8  | 162 | 28               | 45 | 7  | 7 | 24   | 11             | 4  | 12.8 | 7  |                   |
| 1/2HP<br>(0.4kW)  | 11          | 1/3~1/30 (1/35~1/120)    | 57              | 65  | 90  | 130 | 155 | 95  | 158 | 13 | 2.5  | 9  | 17 | 187 | 5 | 110 | 130 | 8  | 160 | 22               | 40 | 7  | 7 | 18   | 14             | 5  | 16.3 | 5  |                   |
|                   | 12          | 1/3~1/90 (1/100~1/200)   | 66              | 90  | 120 | 140 | 180 | 115 | 174 | 15 | -    | 11 | 23 | 207 | 5 | 110 | 130 | 8  | 162 | 28               | 45 | 7  | 7 | 24   | 14             | 5  | 16.3 | 7  |                   |
|                   | 13          | 1/25~1/200               | 78              | 130 | 165 | 170 | 210 | 130 | 205 | 18 | -    | 13 | 26 | 234 | 5 | 110 | 130 | 8  | 162 | 32               | 55 | 10 | 8 | 27   | 14             | 5  | 16.3 | 1  |                   |
| 1HP<br>(0.75kW)   | 12          | 1/3~1/30 (1/40~1/130)    | 66              | 90  | 120 | 140 | 180 | 115 | 191 | 15 | 9    | 11 | 23 | 222 | 5 | 130 | 165 | 10 | 200 | 28               | 45 | 7  | 7 | 24   | 19             | 6  | 21   |    |                   |
|                   | 13          | 1/3~1/90 (1/100~1/165)   | 78              | 130 | 165 | 170 | 210 | 130 | 205 | 18 | -    | 13 | 26 | 249 | 5 | 130 | 165 | 10 | 200 | 32               | 55 | 10 | 8 | 27   | 19             | 6  | 21.8 | 1  |                   |
|                   | 14          | 1/35~1/180 (1/200)       | 95              | 150 | 195 | 210 | 255 | 150 | 240 | 20 | -    | 15 | 28 | 292 | 5 | 130 | 165 | 10 | 200 | 40               | 65 | 10 | 8 | 35   | 19             | 6  | 21.8 | 3  |                   |
| 2HP<br>(1.5kW)    | 12          | (1/2.5~1/60)             | 66              | 90  | 120 | 140 | 180 | 115 | 191 | 15 | 9    | 11 | 23 | 232 | 5 | 130 | 165 | 10 | 200 | 28               | 45 | 7  | 7 | 24   | 2              |    |      |    |                   |
|                   | 13          | 1/3~1/25 (1/30~1/130)    | 78              | 130 | 165 | 170 | 210 | 130 | 205 | 18 | -    | 13 | 26 | 259 | 5 | 130 | 165 | 10 | 200 | 32               | 55 | 10 | 8 | 27   | 24             | 8  | 27.3 | 10 |                   |
|                   | 14          | 1/30~1/90 (1/100~1/170)  | 95              | 150 | 195 | 210 | 255 | 150 | 240 | 20 | -    | 15 | 28 | 302 | 5 | 130 | 165 | 10 | 200 | 40               | 65 | 10 | 8 | 35   | 24             | 8  | 27.3 | 34 |                   |
|                   | 15          | 1/80~1/150 (1/170~1/200) | 112             | 170 | 225 | 265 | 330 | 185 | 295 | 25 | -    | 19 | 38 | 335 | 5 | 130 | 165 | 10 | 200 | 50               | 80 | 14 | 9 | 44.5 | 24             | 8  | 27.3 | 36 |                   |
| 3HP<br>(2.2kW)    | 15          | 1/30~1/85 (1/90~1/100)   | 112             | 170 | 225 | 265 | 330 | 185 | 295 | 25 | -    | 19 | 38 | 349 | 5 | 180 | 215 | 12 | 250 | 50               | 80 | 14 | 9 | 44.5 | 28             | 8  | 31.3 | 3  |                   |

## ■ 臥式雙軸式減速機 Horizontal Type Double-Axle Reducer

### ■ MODEL : SHD



unit: mm

| 馬力<br>Horse Power | 型號<br>Model | 減速比<br>Ratio             | 尺寸 (Dimensions) |     |     |     |     |     |     |    |    |    |     |     |    |    |    |   |      | 輸出軸 Output Shaft |    |    |    |     | 輸入軸 Input Shaft |  |  |  |  | 重量<br>Weight (KG) |
|-------------------|-------------|--------------------------|-----------------|-----|-----|-----|-----|-----|-----|----|----|----|-----|-----|----|----|----|---|------|------------------|----|----|----|-----|-----------------|--|--|--|--|-------------------|
|                   |             |                          | A               | E   | B   | J   | I   | C   | H   | Y  | N  | X  | K   | L   | D  | S  | W  | T | U    | D'               | S' | W' | T' | U'  |                 |  |  |  |  |                   |
| 1/8HP<br>(0.1kW)  | 10          | 1/3~1/50 (1/60~1/200)    | 46              | 40  | 65  | 110 | 135 | 85  | 129 | 12 | 9  | 17 | 68  | 167 | 18 | 30 | 5  | 5 | 15   | 11               | 20 | 4  | 4  | 8.5 | 3               |  |  |  |  |                   |
|                   | 11          | 1/6~1/200                | 57              | 65  | 90  | 130 | 155 | 95  | 145 | 13 | 9  | 17 | 78  | 189 | 22 | 40 | 7  | 7 | 18   | 11               | 20 | 4  | 4  | 8.5 | 6               |  |  |  |  |                   |
| 1/4HP<br>(0.2kW)  | 10          | 1/3~1/30 (1/40~1/155)    | 46              | 40  | 65  | 110 | 135 | 85  | 129 | 12 | 9  | 17 | 68  | 179 | 18 | 30 | 5  | 5 | 15   | 12               | 25 | 4  | 4  | 9.5 |                 |  |  |  |  |                   |
|                   | 11          | 1/3~1/90 (1/95~1/155)    | 57              | 65  | 90  | 130 | 155 | 95  | 145 | 13 | 9  | 17 | 78  | 201 | 22 | 40 | 7  | 7 | 18   | 12               | 25 | 4  | 4  | 9.5 | 6               |  |  |  |  |                   |
|                   | 12          | 1/35~1/200               | 66              | 90  | 120 | 140 | 180 | 115 | 175 | 15 | 11 | 23 | 91  | 217 | 28 | 45 | 7  | 7 | 24   | 12               | 25 | 4  | 4  | 9.5 | 7               |  |  |  |  |                   |
| 1/2HP<br>(0.4kW)  | 11          | 1/3~1/30 (1/35~1/120)    | 57              | 65  | 90  | 130 | 155 | 95  | 145 | 13 | 9  | 17 | 78  | 213 | 22 | 40 | 7  | 7 | 18   | 14               | 30 | 5  | 5  | 11  | 6               |  |  |  |  |                   |
|                   | 12          | 1/3~1/90 (1/100~1/200)   | 66              | 90  | 120 | 140 | 180 | 115 | 175 | 15 | 11 | 23 | 91  | 229 | 28 | 45 | 7  | 7 | 24   | 14               | 30 | 5  | 5  | 11  | 7               |  |  |  |  |                   |
|                   | 13          | 1/25~1/200               | 78              | 130 | 165 | 170 | 210 | 130 | 205 | 18 | 13 | 26 | 104 | 256 | 32 | 55 | 10 | 8 | 27   | 14               | 30 | 5  | 5  | 11  | 10              |  |  |  |  |                   |
| 1HP<br>(0.75kW)   | 12          | 1/3~1/30 (1/40~1/130)    | 66              | 90  | 120 | 140 | 180 | 115 | 175 | 15 | 11 | 23 | 91  | 249 | 28 | 45 | 7  | 7 | 24   | 19               | 35 | 5  | 5  | 16  |                 |  |  |  |  |                   |
|                   | 13          | 1/3~1/90 (1/100~1/165)   | 78              | 130 | 165 | 170 | 210 | 130 | 205 | 18 | 13 | 26 | 104 | 276 | 32 | 55 | 10 | 8 | 27   | 19               | 35 | 5  | 5  | 16  | 11              |  |  |  |  |                   |
|                   | 14          | 1/35~1/180 (1/200)       | 95              | 150 | 195 | 210 | 255 | 150 | 240 | 20 | 15 | 28 | 122 | 319 | 40 | 65 | 10 | 8 | 35   | 19               | 35 | 5  | 5  | 16  | 3               |  |  |  |  |                   |
| 2HP<br>(1.5kW)    | 12          | (1/2.5~1/60)             | 66              | 90  | 120 | 140 | 180 | 115 | 175 | 15 | 11 | 23 | 91  | 264 | 28 | 45 | 7  | 7 | 24   | 24               | 40 | 7  | 7  | 20  | 8               |  |  |  |  |                   |
|                   | 13          | 1/3~1/25 (1/30~1/130)    | 78              | 130 | 165 | 170 | 210 | 130 | 205 | 18 | 13 | 26 | 104 | 291 | 32 | 55 | 10 | 8 | 27   | 24               | 40 | 7  | 7  | 20  | 11              |  |  |  |  |                   |
|                   | 14          | 1/30~1/90 (1/100~1/170)  | 95              | 150 | 195 | 210 | 255 | 150 | 240 | 20 | 15 | 28 | 122 | 334 | 40 | 65 | 10 | 8 | 35   | 24               | 40 | 7  | 7  | 20  | 33              |  |  |  |  |                   |
|                   | 15          | 1/80~1/150 (1/170~1/200) | 112             | 170 | 225 | 265 | 330 | 185 | 295 | 25 | 19 | 38 | 146 | 367 | 50 | 80 | 14 | 9 | 44.5 | 24               | 40 | 7  | 7  | 20  | 34              |  |  |  |  |                   |
| 3HP<br>(2.2kW)    | 14          | 1/25~1/50 (1/60~1/170)   | 95              | 150 | 195 | 210 | 255 | 150 | 240 | 20 | 15 | 28 | 122 | 334 | 40 | 65 | 10 | 8 | 35   | 24               | 40 | 7  | 7  | 20  | 3               |  |  |  |  |                   |
|                   | 15          | 1/30~1/85 (1/90~1/100)   | 112             | 170 | 225 | 265 | 330 | 185 | 295 | 25 | 19 | 38 | 146 | 396 | 50 | 80 | 14 | 9 | 44.5 | 28               | 55 | 7  | 7  | 24  | 3               |  |  |  |  |                   |