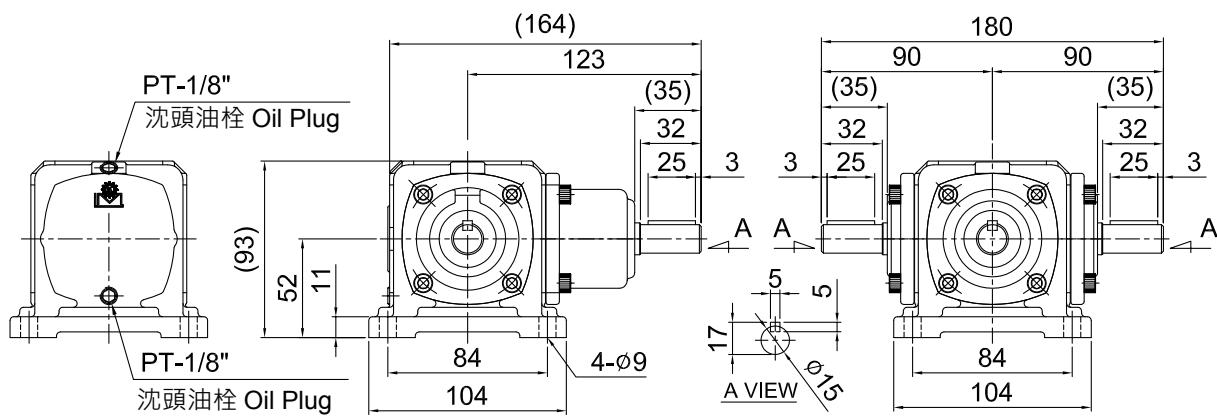
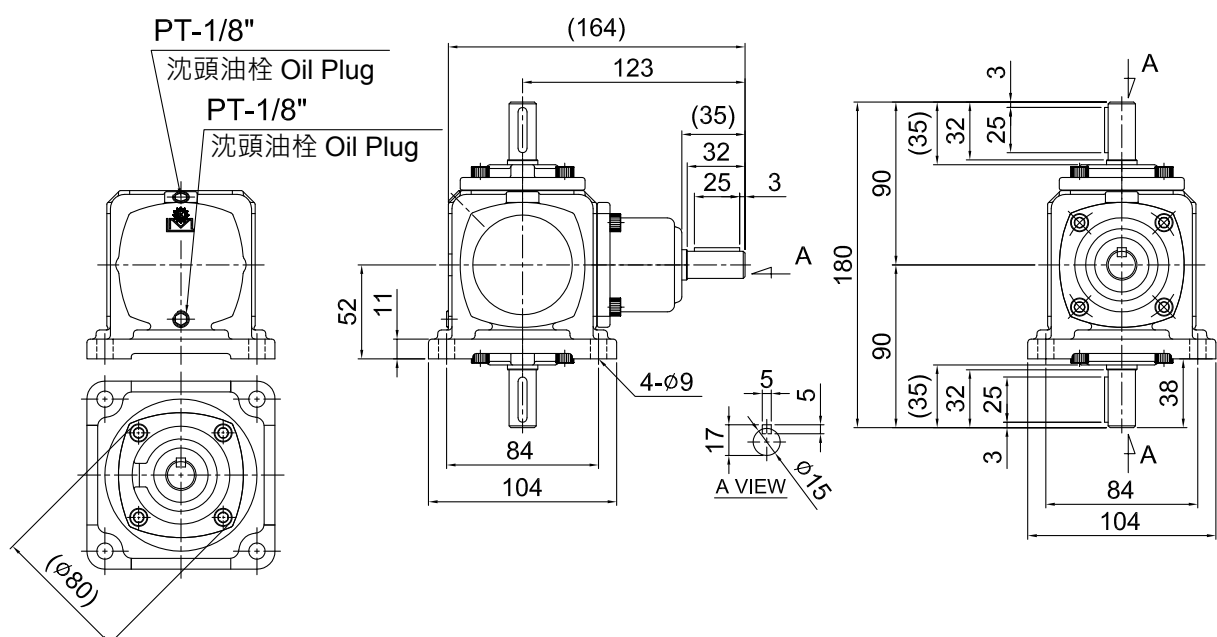


MODEL : TH-15AW



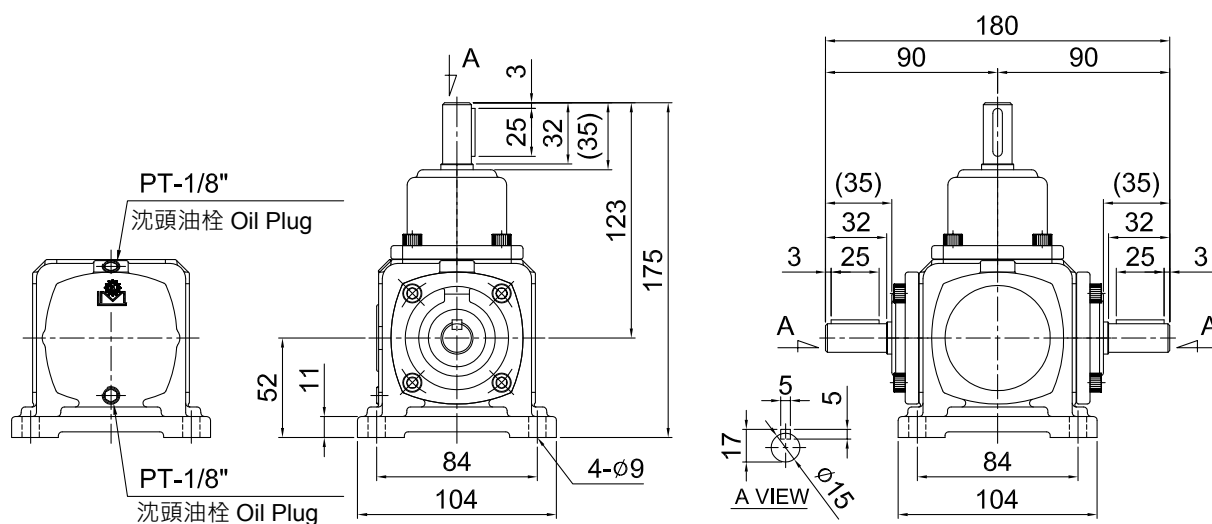
MODEL : TH-15BW



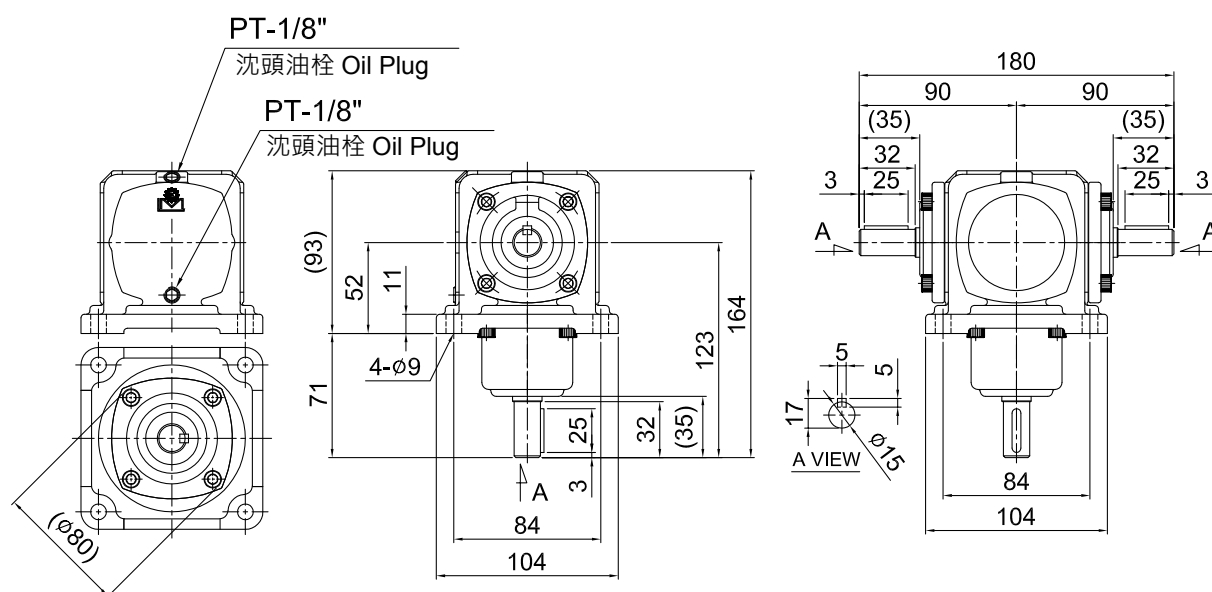
BEVEL GEAR REDUCER SERIES

螺旋傘齒輪轉向器系列

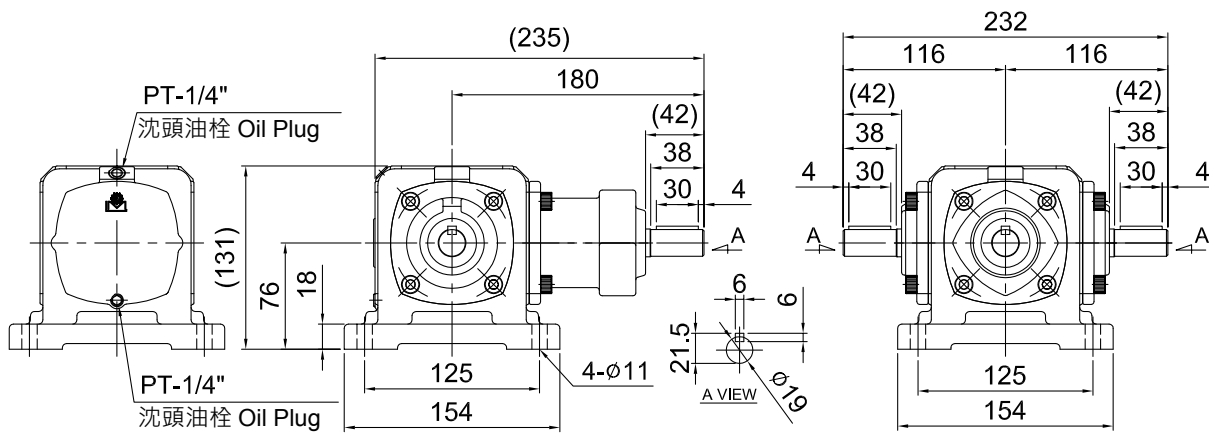
MODEL : TH-15CW



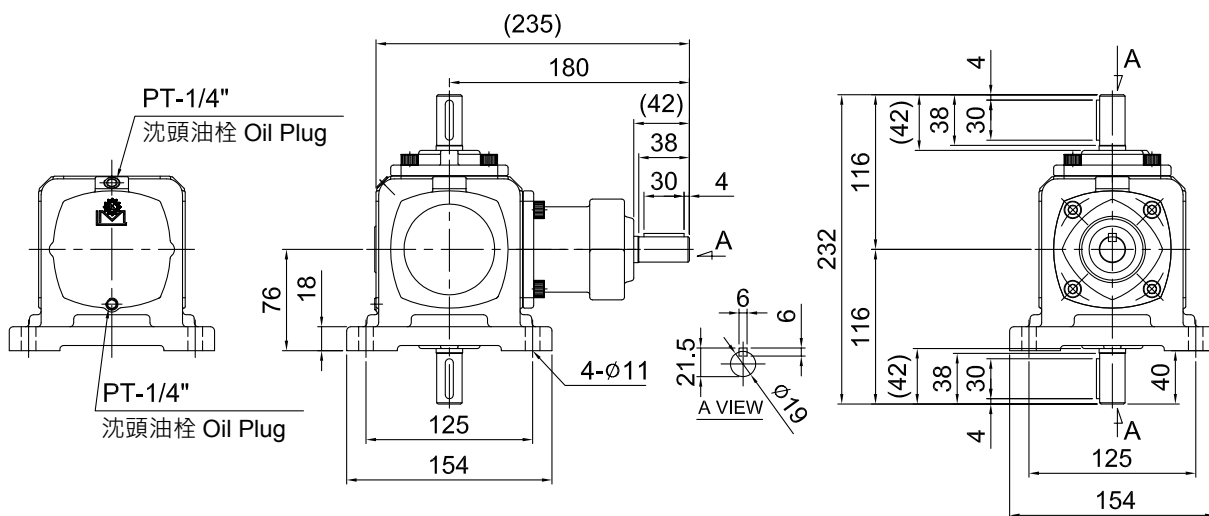
MODEL : TH-15DW



MODEL : TH-19AW



MODEL : TH-19BW



螺旋傘齒輪轉向器系列

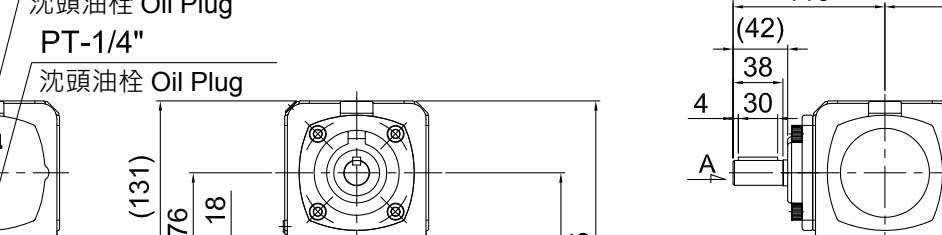
Technical drawing of the PT-1/4" oil plug assembly, showing front, top, and side views with dimensions in millimeters.

Front View (Left): Shows the oil plug assembly. Dimensions include a total height of 256 mm, a base width of 154 mm, and a central mounting hole of 4-Ø11. The top section has a height of 180 mm. The bottom section has a height of 76 mm and a base width of 125 mm. The top section has a height of 18 mm and a base width of 125 mm. The top section has a height of 18 mm and a base width of 125 mm.

Top View (Right): Shows the top of the assembly. Dimensions include a total width of 232 mm, a central mounting hole of 4-Ø11, and a base width of 154 mm. The top section has a height of 180 mm. The bottom section has a height of 76 mm and a base width of 125 mm. The top section has a height of 18 mm and a base width of 125 mm. The top section has a height of 18 mm and a base width of 125 mm.

Side View (Bottom): Shows the side of the assembly. Dimensions include a total height of 256 mm, a base width of 154 mm, and a central mounting hole of 4-Ø11. The top section has a height of 180 mm. The bottom section has a height of 76 mm and a base width of 125 mm. The top section has a height of 18 mm and a base width of 125 mm. The top section has a height of 18 mm and a base width of 125 mm.

Labels: PT-1/4" 沈頭油栓 Oil Plug

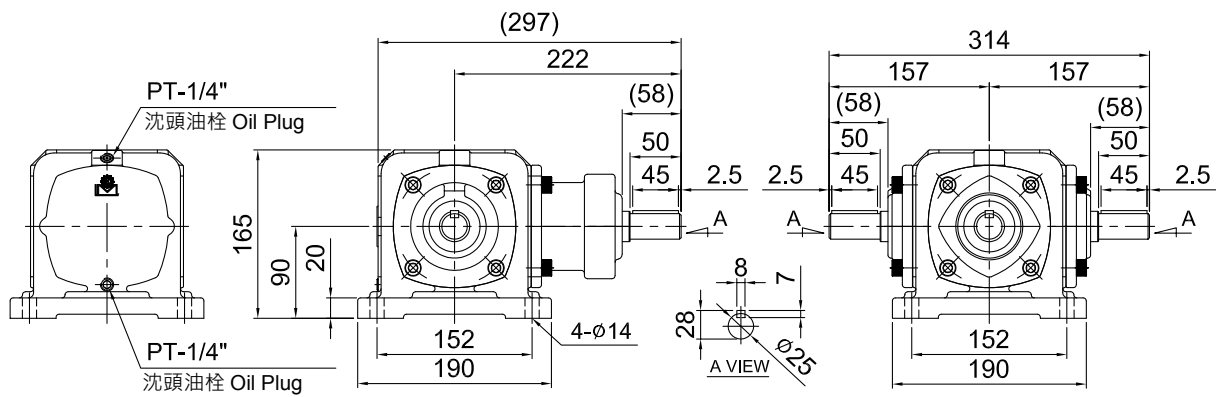


Technical drawing of the PT-1/4" (1/4" NPT) Oil Plug. The drawing includes three views: a top view, a front view, and a side view. The top view shows a square base with a central circular feature and four mounting holes. The front view shows the plug with a central threaded hole and four mounting holes. The side view shows the plug with a central threaded hole and four mounting holes. Dimensions are provided in millimeters (mm) and inches (").

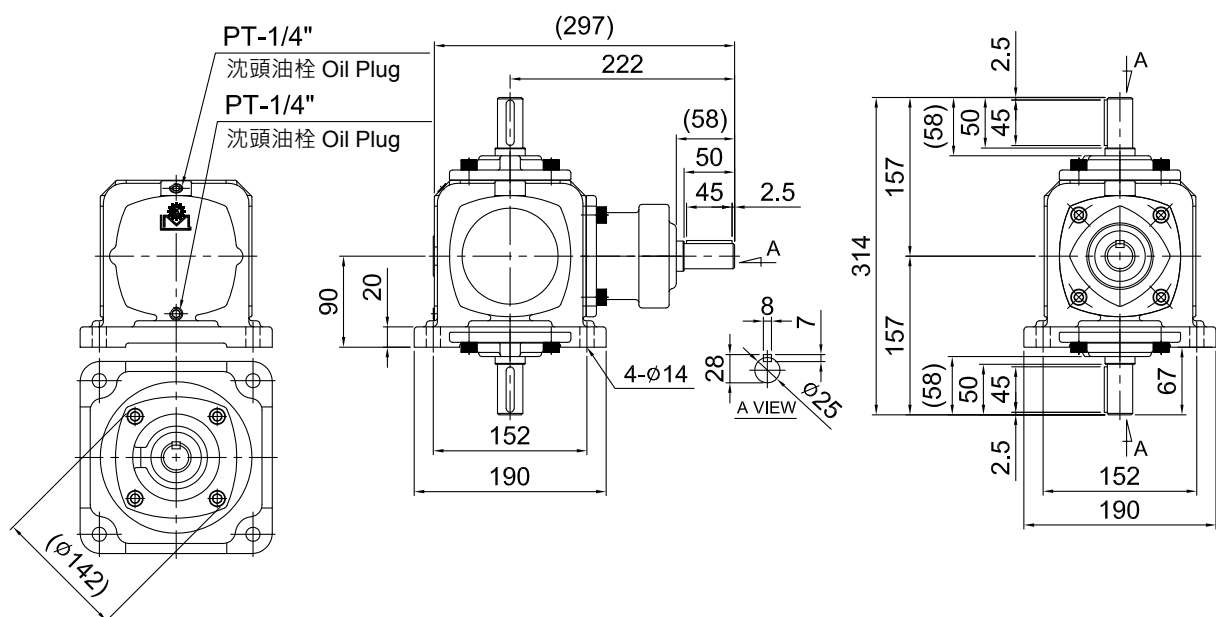
Key dimensions and features:

- Top View: (Ø80) - Overall diameter of the base.
- Front View:
 - Overall height: 235 mm (9.25").
 - Base height: 104 mm (4.1").
 - Base width: 154 mm (6.06").
 - Base thickness: 4 mm (0.16").
 - Base hole diameter: 4-Ø11 mm (4 holes).
 - Base hole spacing: 125 mm (4.92") between centers.
 - Base hole diameter: 19 mm (Ø19).
 - Base hole depth: 30 mm (1.18").
 - Base hole diameter: 38 mm (1.5").
 - Base hole diameter: 42 mm (1.65").
 - Base hole diameter: 18 mm (0.71").
 - Base hole diameter: 76 mm (2.99").
 - Base hole diameter: 131 mm (5.16").
- Side View:
 - Overall width: 232 mm (9.13").
 - Overall height: 154 mm (6.06").
 - Base height: 125 mm (4.92").
 - Base width: 116 mm (4.57").
 - Base thickness: 4 mm (0.16").
 - Base hole diameter: 4-Ø11 mm (4 holes).
 - Base hole spacing: 116 mm (4.57") between centers.
 - Base hole diameter: 19 mm (Ø19).
 - Base hole depth: 30 mm (1.18").
 - Base hole diameter: 38 mm (1.5").
 - Base hole diameter: 42 mm (1.65").
 - Base hole diameter: 18 mm (0.71").
 - Base hole diameter: 76 mm (2.99").
 - Base hole diameter: 131 mm (5.16").

MODEL : TH-25AW



MODEL : TH-25BW



螺旋傘齒輪轉向器系列

PT-1/4"

沈頭油栓 Oil Plug

PT-1/4"

沈頭油栓 Oil Plug

90

20

152

190

4-ø14

222

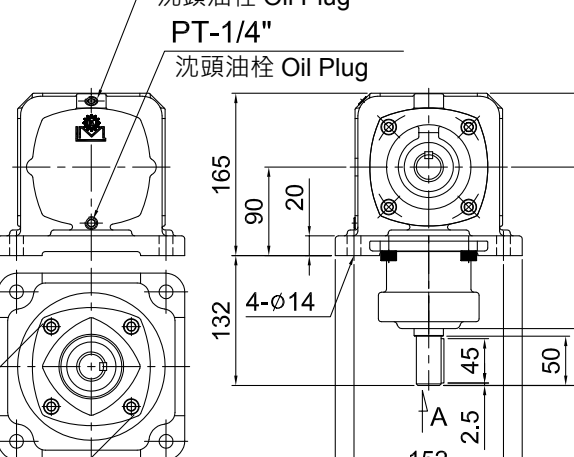
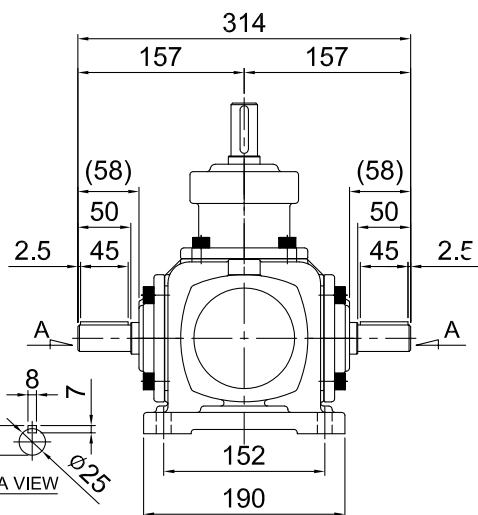
312

2.5

45

50

(58)



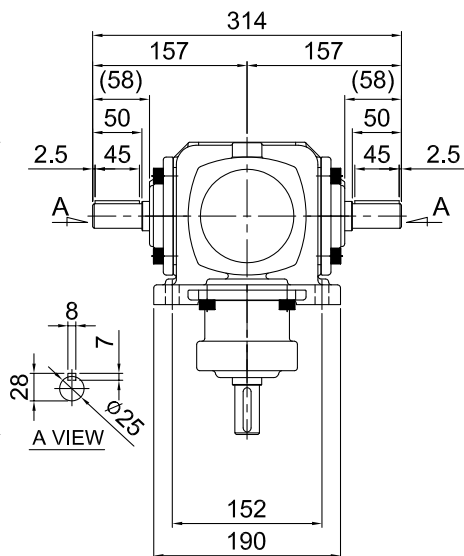
Technical drawing of the PT-1/4" (沈頭油栓 Oil Plug) showing front and side views with dimensions.

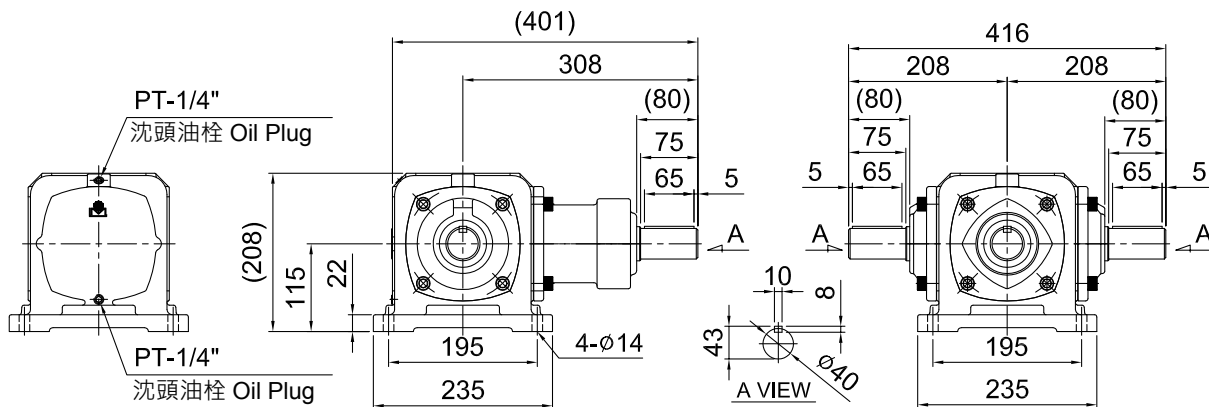
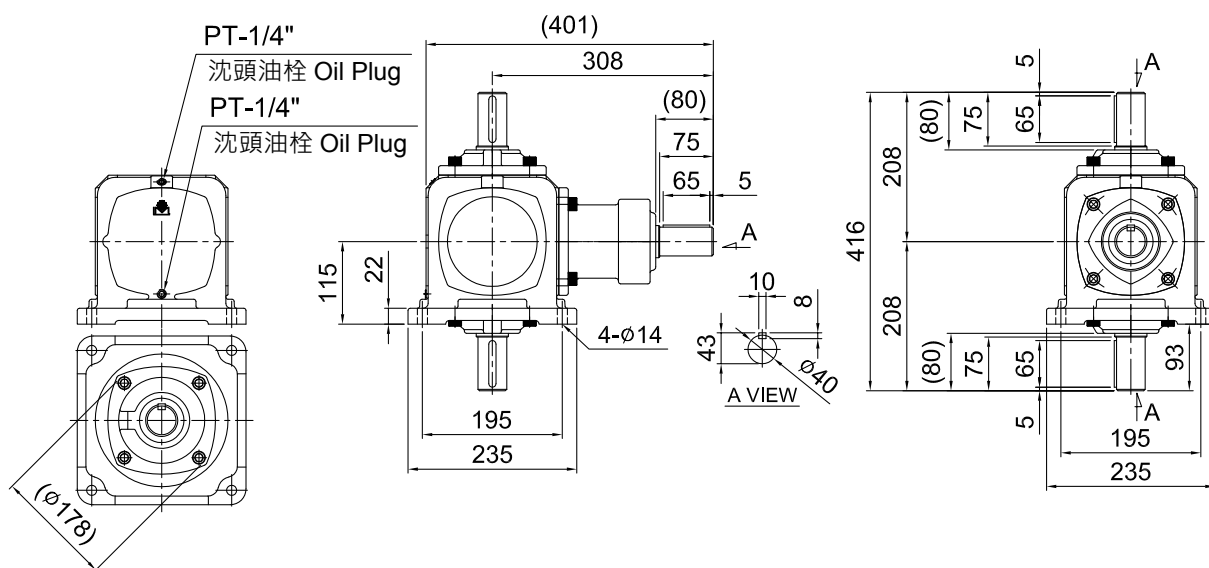
Dimensions:

- Overall height: 165
- Top section height: 90
- Top section width: 20
- Bottom section height: 132
- Bottom section width: 4- $\phi 14$
- Overall width: 222
- Overall depth: 297
- Bottom section depth: 152
- Bottom section width: 190
- Bottom section height: 45
- Bottom section width: 50 (58)
- Bottom section depth: 2.5
- Bottom section width: $\phi 142$

Labels:

- PT-1/4"
- 沈頭油栓 Oil Plug
- 沈頭油栓 Oil Plug
- 4- $\phi 14$
- A

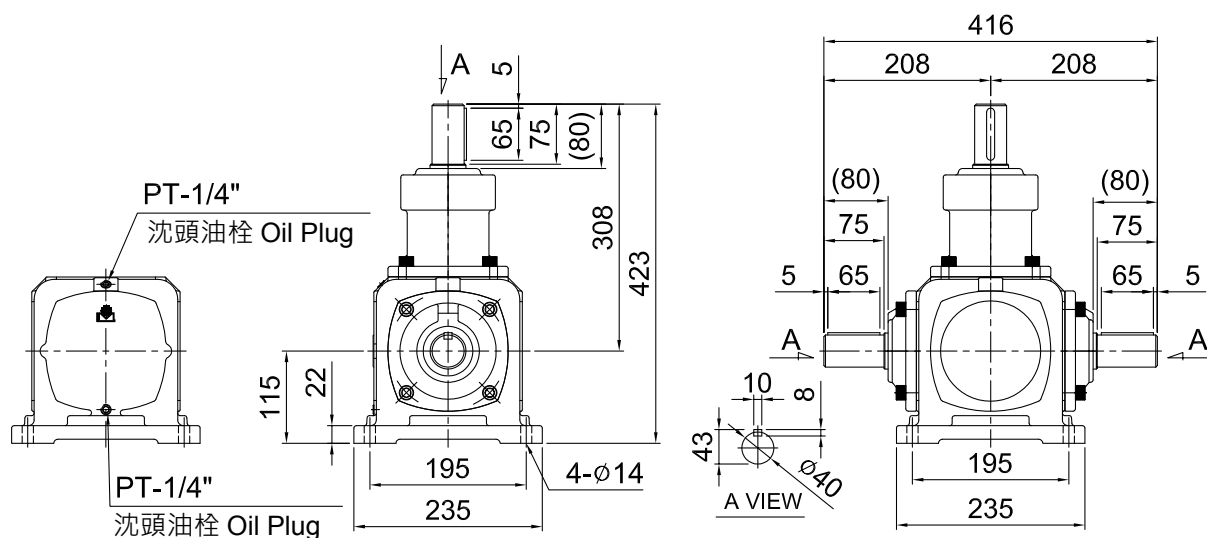


MODEL : TH-40AW**MODEL : TH-40BW**

BEVEL GEAR REDUCER SERIES

螺旋傘齒輪轉向器系列

MODEL : TH-40CW



MODEL : TH-40DW

