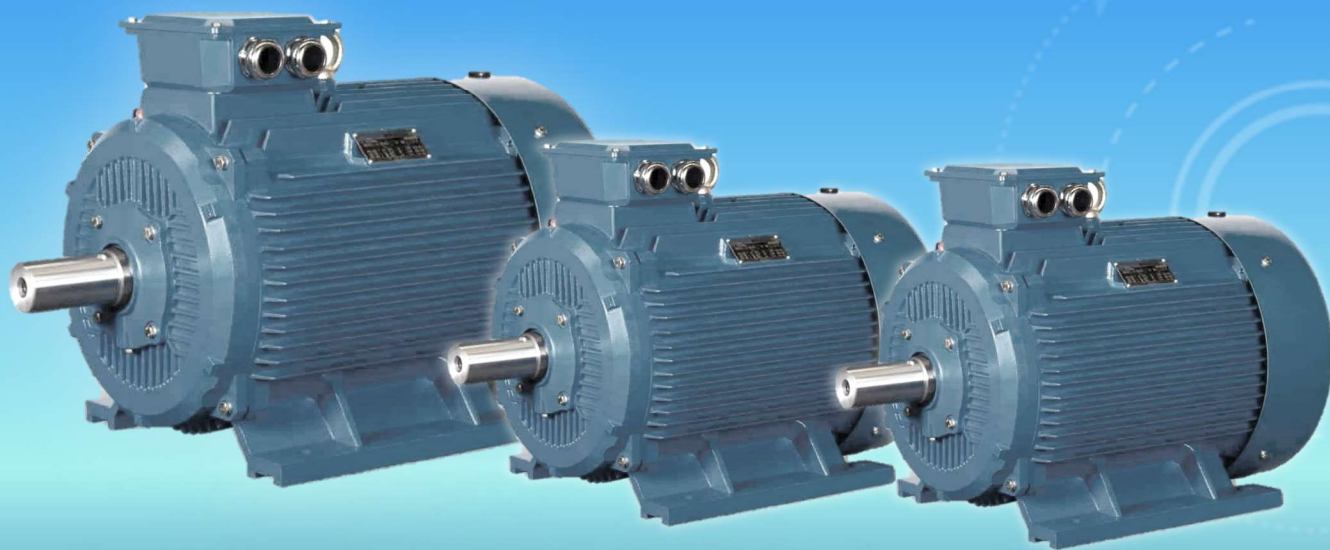
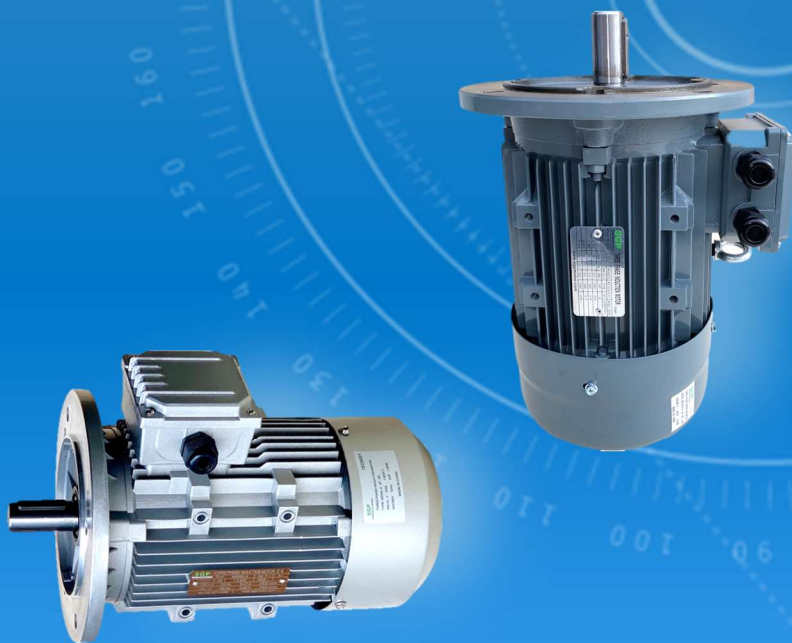


SGP

ĐỘNG CƠ ĐIỆN

SẢN XUẤT THEO DÂY CHUYỀN

CÔNG NGHỆ TIÊU CHUẨN CHÂU ÂU





IE1

The three-phase asynchronous motor of the IE1 series is in line with the third efficiency standard in the provisions of GB 18613-2012 "the energy efficiency limit and the energy efficiency rating of small and medium-sized three-phase asynchronous motors ". And the improvement of the efficiency in its design is in line with the state's requirements on the energy saving and consumption reducing of the manufacturing sector.

IE1 series motors with the mounting dimension in accordance with standard IEC60034, It has good features like optimum structure, attractive appearance, low noise, high efficiency, high protection class as well as high insulation class. IE1 series motors can be widely used in various kinds of general use machineries like fans, pumps, machine tools, compressors, transportation and so on, and can also be used in the hazardous areas with oil and chemical, steel plants, mining industry.

Technical data

Type No.	Rated output		Rated current IFL 380V A	Rated current IFL 400V A	Rated current IFL 420V A	Rated speed (r/min)	Rated current IFL 440V A	Rated current IFL 460V A	Rated current IFL 480V A	Rated speed (r/min)	EFF %	Power factor cos φ	Rated Torque N.m	Locked Torque TST/TFL	Locked Current Rated Torque IST/IFL	Max Torque Rated Torque TM/TFL	Noise level LW dB(A)	Weight (Kg)
	(kW)	HP	380~420V/50Hz				440~480V/60Hz											
Synchronous speed 3000r/min																		
IE1-63M1-2	0.18	0.25	0.53	0.50	0.48	2720	0.46	0.44	0.42	3260	65.0	0.80	0.6	2.2	5.5	2.2	61	7
IE1-63M2-2	0.25	0.37	0.69	0.66	0.62	2720	0.60	0.57	0.55	3260	68.0	0.81	0.9	2.2	5.5	2.2	61	8
IE1-71M1-2	0.37	0.55	0.99	0.94	0.90	2740	0.86	0.82	0.78	3285	70.0	0.81	1.3	2.2	6.1	2.2	64	10
IE1-71M2-2	0.55	0.75	1.4	1.33	1.27	2740	1.21	1.16	1.11	3285	73.0	0.82	1.9	2.2	6.1	2.3	64	11
IE1-80M1-2	0.75	1.0	1.83	1.74	1.66	2825	1.58	1.51	1.45	3390	75.0	0.83	2.5	2.2	6.1	2.3	67	15
IE1-80M2-2	1.1	1.5	2.61	2.48	2.36	2825	2.25	2.16	2.07	3390	77.0	0.84	3.7	2.2	7.0	2.3	67	16
IE1-90S-2	1.5	2.0	3.46	3.29	3.13	2840	2.99	2.86	2.74	3405	79.0	0.84	5.0	2.2	7.0	2.3	72	19
IE1-90L-2	2.2	3.0	4.85	4.61	4.39	2840	4.19	4.01	3.84	3405	81.0	0.85	7.4	2.2	7.0	2.3	72	22
IE1-100L-2	3	4.0	6.34	6.02	5.74	2870	5.48	5.24	5.02	3440	83.0	0.87	10.0	2.2	7.5	2.3	76	32
IE1-112M-2	4	5.5	8.20	7.79	7.42	2880	7.08	6.77	6.49	3455	85.0	0.88	13.3	2.2	7.5	2.3	77	39
IE1-132S1-2	5.5	7.5	11.1	10.5	10.0	2900	9.59	9.17	8.79	3480	86.0	0.88	18.1	2.2	7.5	2.3	80	58
IE1-132S2-2	7.5	10	14.9	14.2	13.5	2900	12.9	12.3	11.8	3480	87.0	0.88	24.7	2.2	7.5	2.3	80	66
IE1-160M1-2	11	15	21.2	20.1	19.2	2930	18.3	17.5	16.8	3515	88.4	0.89	35.9	2.2	7.5	2.3	86	104
IE1-160M2-2	15	20	28.6	27.2	25.9	2930	24.7	23.6	22.6	3515	89.4	0.89	48.9	2.2	7.5	2.3	86	112
IE1-160L-2	18.5	25	34.7	33.0	31.4	2930	30.0	28.7	27.5	3515	90.0	0.90	60.3	2.2	7.5	2.3	86	132
IE1-180M-2	22	30	41.0	39.0	37.1	2940	35.4	33.9	32.5	3525	90.5	0.90	71.5	2.0	7.5	2.3	89	162
IE1-200L1-2	30	40	55.4	52.6	50.1	2950	47.9	45.8	43.9	3540	91.4	0.90	97.1	2.0	7.5	2.3	92	225
IE1-200L2-2	37	50	67.9	64.5	61.4	2950	58.6	56.1	53.8	3540	92.0	0.90	119.8	2.0	7.5	2.3	92	245
IE1-225M-2	45	60	82.1	78.0	74.3	2960	70.9	67.8	65.0	3550	92.5	0.90	145.2	2.0	7.5	2.3	92	290
IE1-250M-2	55	75	99.8	94.8	90.3	2965	86.2	82.4	79.0	3555	93.0	0.90	177.2	2.0	7.5	2.3	93	367
IE1-280S-2	75	100	135.3	128.5	122.4	2970	116.9	111.8	107.1	3560	93.6	0.90	241.2	2.0	7.5	2.3	94	495
IE1-280M-2	90	120	160.0	152.0	144.8	2970	138.2	132.2	126.7	3560	93.9	0.91	289.4	2.0	7.5	2.3	94	540
IE1-315S-2	110	150	195.4	185.6	176.8	2975	168.8	161.4	154.7	3570	94.0	0.91	353.1	1.8	7.1	2.2	96	880
IE1-315M-2	132	180	233.2	221.5	211.0	2975	201.4	192.6	184.6	3570	94.5	0.91	423.7	1.8	7.1	2.2	96	1000
IE1-315L1-2	160	220	279.3	265.3	252.7	2975	241.2	230.7	221.1	3570	94.6	0.92	513.6	1.8	7.1	2.2	99	1080
IE1-315L2-2	200	270	348.4	331.0	315.2	2975	300.9	287.8	275.8	3570	94.8	0.92	642.0	1.8	7.1	2.2	99	1130
IE1-355M-2	250	340	433.7	412.0	392.4	2980	374.6	358.3	343.4	3575	95.3	0.92	801.2	1.6	7.1	2.2	103	1560
IE1-355L-2	315	430	545.3	518.0	493.4	2980	470.9	450.5	431.7	3575	95.6	0.92	1009.5	1.6	7.1	2.2	103	1740

Technical data

Type No.	Rated output		Rated current IFL 380V A	Rated current IFL 400V A	Rated current IFL 420V A	Rated speed (r/min)	Rated current IFL 440V A	Rated current IFL 460V A	Rated current IFL 480V A	Rated speed (r/min)	EFF %	Power factor cos φ	Rated Torque N.m	Locked Torque Rated Torque TST/TFL	Locked Current Rated Torque IST/IFL	Max Torque Rated Torque TM/TFL	Noise level LW dB(A)	Weight (Kg)
	(kW)	HP																
			380~420V/50Hz				440~480V/60Hz											
Synchronous speed 1500r/min																		
IE1-63M1-4	0.12	0.18	0.44	0.42	0.40	1310	0.38	0.36	0.35	1570	57.0	0.72	0.9	2.1	4.4	2.2	52	7.5
IE1-63M2-4	0.18	0.25	0.62	0.59	0.56	1310	0.54	0.51	0.49	1570	60.0	0.73	1.3	2.1	4.4	2.2	52	8.5
IE1-71M1-4	0.25	0.37	0.79	0.75	0.71	1330	0.68	0.65	0.63	1595	65.0	0.74	1.8	2.1	5.2	2.2	55	10.5
IE1-71M2-4	0.37	0.55	1.12	1.06	1.01	1330	0.97	0.93	0.89	1595	67.0	0.75	2.7	2.1	5.2	2.2	55	11.5
IE1-80M1-4	0.55	0.75	1.57	1.49	1.42	1390	1.36	1.30	1.24	1665	71.0	0.75	3.8	2.4	5.2	2.3	58	15
IE1-80M2-4	0.75	1.00	2.05	1.95	1.85	1390	1.77	1.69	1.62	1665	73.0	0.76	5.2	2.3	6.0	2.3	58	16
IE1-90S-4	1.1	1.5	2.85	2.71	2.58	1400	2.46	2.35	2.26	1680	76.2	0.77	7.6	2.3	6.0	2.3	61	20
IE1-90L-4	1.5	2.0	3.68	3.50	3.33	1400	3.18	3.04	2.91	1680	78.5	0.79	10.3	2.3	6.0	2.3	61	23
IE1-100L1-4	2.2	3.0	5.09	4.84	4.61	1420	4.40	4.20	4.03	1700	81.0	0.81	14.9	2.3	7.0	2.3	64	31
IE1-100L2-4	3	4.0	6.73	6.39	6.09	1420	5.81	5.56	5.33	1700	82.6	0.82	20.3	2.3	7.0	2.3	64	35
IE1-112M-4	4	5.5	8.80	8.36	7.96	1440	7.60	7.27	6.97	1725	84.2	0.82	26.5	2.3	7.0	2.3	65	41
IE1-132S-4	5.5	7.5	11.7	11.1	10.6	1440	10.1	9.67	9.26	1725	85.7	0.83	36.5	2.3	7.0	2.3	71	60
IE1-132M-4	7.5	10.0	15.6	14.8	14.1	1440	13.5	12.9	12.4	1725	87.0	0.84	49.7	2.3	7.0	2.3	71	74
IE1-160M-4	11	15	22.5	21.4	20.4	1460	19.4	18.6	17.8	1750	88.4	0.84	72.0	2.2	7.0	2.3	75	108
IE1-160L-4	15	20	30.0	28.5	27.1	1460	25.9	24.8	23.8	1750	89.4	0.85	98.1	2.2	7.5	2.3	75	128
IE1-180M-4	18.5	25	36.3	34.5	32.8	1465	31.4	30.0	28.7	1755	90.5	0.86	120.2	2.2	7.5	2.3	76	158
IE1-180L-4	22	30	42.9	40.8	38.8	1465	37.1	35.4	34.0	1755	91.0	0.86	142.9	2.2	7.5	2.3	76	172
IE1-200L-4	30	40	58.0	55.1	52.5	1470	50.1	47.9	45.9	1760	92.0	0.86	194.9	2.2	7.2	2.3	79	241
IE1-225S-4	37	50	70.2	66.7	63.5	1475	60.6	58.0	55.6	1770	92.5	0.87	239.6	2.2	7.2	2.3	81	280
IE1-225M-4	45	60	85.0	80.8	76.9	1475	73.4	70.2	67.3	1770	92.8	0.87	291.4	2.2	7.2	2.3	81	305
IE1-250M-4	55	75	103.3	98.1	93.5	1475	89.2	85.3	81.8	1770	93.0	0.87	354.9	2.2	7.2	2.3	83	375
IE1-280S-4	75	100	139.3	132.3	126.0	1480	120.3	115.1	110.3	1775	93.8	0.87	484.0	2.2	7.2	2.3	86	507
IE1-280M-4	90	120	167.4	159.0	151.5	1480	144.6	138.3	132.5	1775	94.2	0.87	580.7	2.2	7.2	2.3	86	572
IE1-315S-4	110	150	201.0	191.0	181.9	1480	173.6	166.0	159.1	1775	94.5	0.88	709.8	2.1	6.9	2.2	93	930
IE1-315M-4	132	180	240.4	228.4	217.5	1480	207.6	198.6	190.3	1775	94.8	0.88	851.8	2.1	6.9	2.2	93	1050
IE1-315L1-4	160	220	287.8	273.4	260.4	1480	248.6	237.8	227.8	1775	94.9	0.89	1032.4	2.1	6.9	2.2	97	1110
IE1-315L2-4	200	270	359.8	341.8	325.5	1480	310.7	297.2	284.8	1775	95.0	0.89	1290.5	2.1	6.9	2.2	97	1180
IE1-355M-4	250	340	443.3	421.1	401.1	1490	382.9	366.2	351.0	1785	95.3	0.90	1602.3	2.1	6.9	2.2	101	1580
IE1-355L-4	315	430	558.6	530.7	505.4	1490	482.4	461.5	442.2	1785	95.6	0.90	2019.0	2.1	6.9	2.2	101	1750

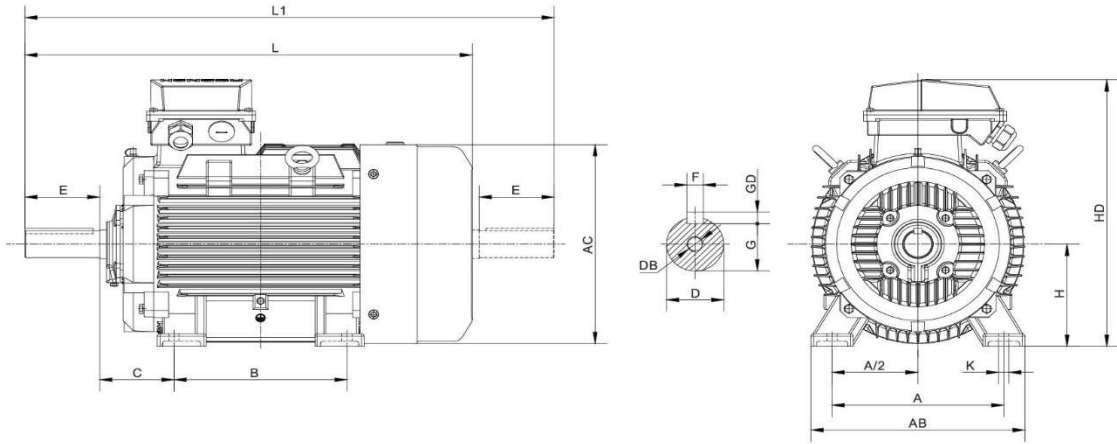
Technical data

Type No.	Rated output		Rated current IFL 380V A	Rated current IFL 400V A	Rated current IFL 420V A	Rated speed (r/min)	Rated current IFL 440V A	Rated current IFL 460V A	Rated current IFL 480V A	Rated speed (r/min)	EFF %	Power factor cos φ	Rated Torque N.m	Locked Torque Rated Torque TST/TFL	Locked Current Rated Torque IST/IFL	Max Torque Rated Torque TM/TFL	Noise level LW dB(A)	Weight (Kg)
	(kW)	HP																
			380~420V/50Hz			440~480V/60Hz												
Synchronous speed 1000r/min																		
IE1-71M1-6	0.18	0.25	0.74	0.70	0.67	850	0.64	0.61	0.59	1020	56.0	0.66	2.0	1.9	4.0	2.0	52	10
IE1-71M2-6	0.25	0.37	0.95	0.90	0.86	850	0.82	0.78	0.75	1020	59.0	0.68	2.8	1.9	4.0	2.0	52	11
IE1-80M1-6	0.37	0.50	1.30	1.24	1.18	900	1.12	1.07	1.03	1080	62.0	0.70	4.0	1.9	4.7	2.0	54	15
IE1-80M2-6	0.55	0.75	1.79	1.70	1.62	900	1.55	1.48	1.42	1080	65.0	0.72	5.9	1.9	4.7	2.1	54	16
IE1-90S-6	0.75	1.00	2.29	2.18	2.07	910	1.98	1.89	1.81	1090	69.0	0.72	7.9	2.0	5.5	2.1	57	20
IE1-90L-6	1.1	1.5	3.18	3.02	2.88	910	2.75	2.63	2.52	1090	72.0	0.73	11.5	2.0	5.5	2.1	57	23
IE1-100L-6	1.5	2.0	4.00	3.80	3.62	930	3.45	3.30	3.17	1115	76.0	0.75	15.6	2.0	5.5	2.1	61	30
IE1-112M-6	2.2	3.0	5.57	5.29	5.04	940	4.81	4.60	4.41	1125	79.0	0.76	22.5	2.0	6.5	2.1	65	39
IE1-132S-6	3	4.0	7.40	7.03	6.70	960	6.39	6.11	5.86	1150	81.0	0.76	29.8	2.1	6.5	2.1	69	55
IE1-132M1-6	4	5.5	9.75	9.26	8.82	960	8.42	8.05	7.72	1150	82.0	0.76	39.8	2.1	6.5	2.1	69	68
IE1-132M2-6	5.5	7.5	12.9	12.3	11.7	960	11.1	10.7	10.2	1150	84.0	0.77	54.4	2.1	6.5	2.1	69	73
IE1-160M-6	7.5	10.0	17.2	16.3	15.6	970	14.9	14.2	13.6	1160	86.0	0.77	73.8	2.0	6.5	2.1	73	104
IE1-160L-6	11	15	24.5	23.3	22.2	970	21.2	20.2	19.4	1160	87.5	0.78	108.3	2.0	6.5	2.1	73	126
IE1-180L-6	15	20	31.6	30.0	28.6	970	27.3	26.1	25.0	1160	89.0	0.81	147.7	2.0	7.0	2.1	73	168
IE1-200L1-6	18.5	25	38.6	36.7	34.9	975	33.3	31.9	30.6	1170	90.0	0.81	180.3	2.1	7.0	2.1	76	215
IE1-200L2-6	22	30	44.7	42.5	40.4	975	38.6	36.9	35.4	1170	90.0	0.83	214.4	2.1	7.0	2.1	76	238
IE1-225M-6	30	40	59.3	56.3	53.7	980	51.2	49.0	47.0	1175	91.5	0.84	292.3	2.0	7.0	2.1	76	280
IE1-250M-6	37	50	71.1	67.6	64.3	980	61.4	58.7	56.3	1175	92.0	0.86	360.6	2.1	7.0	2.1	78	350
IE1-280S-6	45	60	85.9	81.6	77.7	980	74.2	71.0	68.0	1175	92.5	0.86	438.5	2.1	7.0	2.0	80	463
IE1-280M-6	55	75	104.7	99.5	94.7	980	90.4	86.5	82.9	1175	92.8	0.86	536.0	2.1	7.0	2.0	80	508
IE1-315S-6	75	100	141.7	134.6	128.2	985	122.4	117.1	112.2	1180	93.5	0.86	727.2	2.0	7.0	2.0	85	860
IE1-315M-6	90	120	169.5	161.0	153.4	985	146.4	140.0	134.2	1180	93.8	0.86	872.6	2.0	7.0	2.0	85	980
IE1-315L1-6	110	150	206.7	196.4	187.0	985	178.5	170.8	163.6	1180	94.0	0.86	1066.5	2.0	6.7	2.0	85	1060
IE1-315L2-6	132	180	244.7	232.5	221.4	985	211.3	202.1	193.7	1180	94.2	0.87	1279.8	2.0	6.7	2.0	85	1135
IE1-355M1-6	160	220	292.3	277.7	264.5	990	252.4	241.5	231.4	1185	94.5	0.88	1543.4	1.9	6.7	2.0	92	1480
IE1-355M2-6	200	270	365.4	347.1	330.6	990	315.6	301.9	289.3	1185	94.7	0.88	1929.3	1.9	6.7	2.0	92	1640
IE1-355L-6	250	340	456.8	434.0	413.3	990	394.5	377.4	361.6	1185	94.9	0.88	2411.6	1.9	6.7	2.0	92	1810

Technical data

type No.	Rated output		Rated current IFL 380V A	Rated current IFL 400V A	Rated current IFL 420V A	speed (r/min)	Rated current IFL 440V A	Rated current IFL 460V A	Rated current IFL 480V A	Rated speed (r/min)	EFF %	Power factor cos φ	Rated Torque N.m	Rated Torque TST/TFL	Rated Current IST/IFL	Rated Torque TM/TFL	NOISE level LW dB(A)	Weight (Kg)
	(kW)	HP	380~420V/50Hz				440~480V/60Hz											
Synchronous speed 750r/min																		
IE1-80M1-8	0.18	0.25	0.88	0.84	0.80	650	0.76	0.73	0.70	780	51.0	0.61	2.7	1.8	3.3	1.9	52	15
IE1-80M2-8	0.25	0.37	1.15	1.09	1.04	650	0.99	0.95	0.91	780	54.0	0.61	3.7	1.8	3.3	1.9	52	16
IE1-90S-8	0.37	0.50	1.49	1.42	1.35	660	1.29	1.23	1.18	790	62.0	0.61	5.3	1.8	4.0	1.9	56	20
IE1-90L-8	0.55	0.75	2.17	2.06	1.96	660	1.87	1.79	1.72	790	63.0	0.61	7.8	1.8	4.0	2.0	56	24
IE1-100L1-8	0.75	1.00	2.40	2.28	2.17	690	2.07	1.98	1.90	825	71.0	0.67	10.5	1.8	4.0	2.0	59	28
IE1-100L2-8	1.1	1.5	3.32	3.15	3.00	690	2.87	2.74	2.63	825	73.0	0.69	15.4	1.8	5.0	2.0	59	30
IE1-112M-8	1.5	2.0	4.40	4.18	3.98	700	3.80	3.63	3.48	840	75.0	0.69	20.8	1.8	5.0	2.0	61	38
IE1-132S-8	2.2	3.0	6.04	5.74	5.46	710	5.22	4.99	4.78	850	78.0	0.71	29.8	1.8	6.0	2.0	64	54
IE1-132M-8	3	4.0	7.90	7.51	7.15	710	6.82	6.53	6.25	850	79.0	0.73	40.6	1.8	6.0	2.0	64	63
IE1-160M1-8	4	5.5	10.3	9.79	9.32	720	8.90	8.51	8.15	860	81.0	0.73	53.1	1.9	6.0	2.0	68	91
IE1-160M2-8	5.5	7.5	13.6	12.9	12.3	720	11.8	11.2	10.8	860	83.0	0.74	73.0	2.0	6.0	2.0	68	103
IE1-160L-8	7.5	10.0	17.8	16.9	16.1	720	15.4	14.7	14.1	860	85.5	0.75	99.5	2.0	6.0	2.0	68	128
IE1-180L-8	11	15	25.1	23.9	22.7	730	21.7	20.7	19.9	875	87.5	0.76	143.9	2.0	6.6	2.0	70	165
IE1-200L-8	15	20	34.1	32.4	30.9	730	29.5	28.2	27.0	875	88.0	0.76	196.2	2.0	6.6	2.0	73	224
IE1-225S-8	18.5	25	41.1	39.1	37.2	730	35.5	34.0	32.5	875	90.0	0.76	242.0	1.9	6.6	2.0	73	255
IE1-225M-8	22	30	47.4	45.0	42.9	730	40.9	39.2	37.5	875	90.5	0.78	287.8	1.9	6.6	2.0	73	292
IE1-250M-8	30	40	63.4	60.2	57.4	735	54.8	52.4	50.2	880	91.0	0.79	389.8	1.9	6.6	2.0	75	368
IE1-280S-8	37	50	77.8	73.9	70.4	735	67.2	64.3	61.6	880	91.5	0.79	480.7	1.9	6.6	2.0	76	475
IE1-280M-8	45	60	94.1	89.4	85.1	735	81.3	77.7	74.5	880	92.0	0.79	584.7	1.9	6.6	2.0	76	527
IE1-315S-8	55	75	111.2	105.6	100.6	735	96.0	91.9	88.0	880	92.8	0.81	714.6	1.8	6.6	2.0	82	840
IE1-315M-8	75	100	151.3	143.7	136.9	735	130.7	125.0	119.8	880	93.0	0.81	974.5	1.8	6.6	2.0	82	1020
IE1-315L1-8	90	120	177.8	168.9	160.9	740	153.6	146.9	140.8	885	93.8	0.82	1169.4	1.8	6.6	2.0	82	1100
IE1-315L2-8	110	150	216.8	206.0	196.2	740	187.2	179.1	171.6	885	94.0	0.82	1429.3	1.8	6.4	2.0	82	1180
IE1-355M1-8	132	180	261.0	248.0	236.1	740	225.4	215.6	206.6	885	93.7	0.82	1703.5	1.8	6.4	2.0	90	1610
IE1-355M2-8	160	220	314.7	299.0	284.7	740	271.8	260.0	249.1	885	94.2	0.82	2064.9	1.8	6.4	2.0	90	1700
IE1-355L-8	200	270	387.4	368.0	350.5	740	334.6	320.0	306.7	885	94.5	0.83	2581.1	1.8	6.4	2.0	90	1850
Synchronous speed 600r/min																		
IE1-315S-10	45	60	99.6	94.6	90.1	590	86.0	82.3	78.9	705	91.5	0.75	728.4	1.5	6.2	2.0	82	830
IE1-315M-10	55	75	121.1	115.1	109.6	590	104.6	100.0	95.9	705	92.0	0.75	890.3	1.5	6.2	2.0	82	960
IE1-315L1-10	75	100	162.1	154.0	146.7	590	140.0	133.9	128.3	705	92.5	0.76	1214.0	1.5	6.2	2.0	82	1080
IE1-315L2-10	90	120	191.0	181.5	172.8	590	165.0	157.8	151.2	705	93.0	0.77	1456.8	1.5	6.2	2.0	82	1150
IE1-355M1-10	110	150	229.9	218.4	208.0	590	198.6	189.9	182.0	705	93.2	0.78	1780.5	1.3	6.0	2.0	90	1565
IE1-355M2-10	132	180	275.0	261.3	248.8	590	237.5	227.2	217.7	705	93.5	0.78	2136.6	1.3	6.0	2.0	90	1685
IE1-355L-10	160	220	333.3	316.6	301.6	590	287.9	275.3	263.9	705	93.5	0.78	2589.8	1.3	6.0	2.0	90	1830

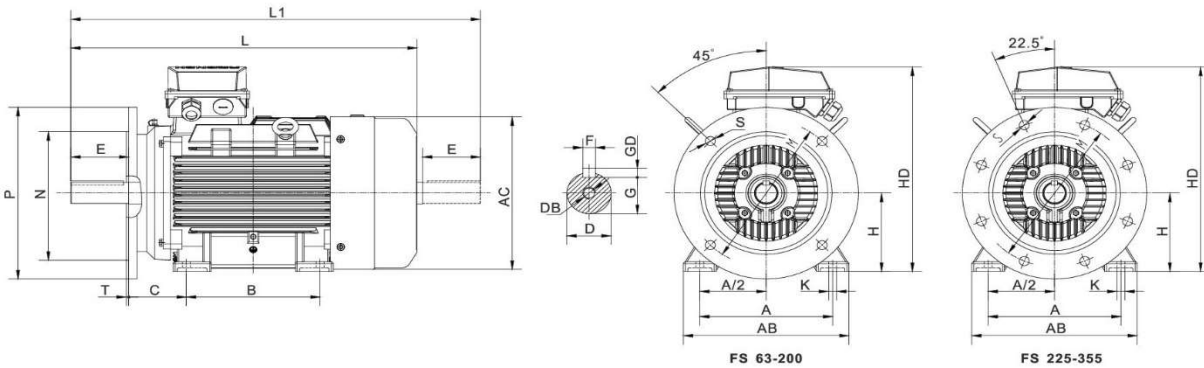
DIMENSIONS MOUNT B3



FS 63-355
NOTES: FS 63-90 motor without eyebolts

Frame size	Poles	Mounting Dimensions											OVERALL DIMENSIONS					
		A	A/2	B	C	D	E	F	G	H	K	DB	GD	AB	AC	HD	L	L1
63M	2, 4	100	50	80	40	11	23	6	8.5	63	7	M4	4	135	130	180	230	255
71M	2, 4, 6	112	56	90	45	14	30	0	11	71	7	M5	5	150	145	195	255	290
80M	2, 4, 6, 8	125	62.5	100	50	19	40	0	15.5	80	10	M6	6	165	175	220	295	340
90S		140	70	100	56	24	50	8	20	99	10	M8	7	180	195	250	320	375
90L		125	56	125	56	24	50	8	20	99	10	M8		7	180	195	250	345
100L		160	80	140	63	28	60	0	24	100	12	M10	8	205	215	270	385	450
112M		190	95	140	70	28	60	0	24	112	12	M10		8	230	240	300	400
132S		216	108	140	89	38	80	10	33	132	15	M12	9	270	275	345	470	555
132M		178	89	178	89	38	80	10	33	132	15	M12		9	270	275	345	510
160M		254	127	210	108	42	110	12	37	160	15	M16	10	320	330	420	615	730
160L		254	127	254	108	42	110	12	37	160	15	M16		10	320	330	420	670
180M		279	139.5	241	121	48	140	14	42.5	180	19	M16	11	355	380	455	700	815
180L	279	139.5	279	121	48	140	14	42.5	180	19	M16	11		355	380	455	740	855
200L	318	159	305	133	55	160	16	49	200	19	M16	12	395	420	505	770	885	
225S	4, 8	356	178	286	149	60	140	18	53	225	19		M20	13	435	470	560	815
225M	2		311	149	55	110	16	49	49	225	19	M20	13		435	470	560	820
250M	4, 6, 8	406	203	349	168	60	140	18	53	250	24	M20	14	490	510	615	910	1055
280S	2	457	228.5	368	190	65			140	18								58
280M	4, 6, 8			457	228.5	368	190	75	20	20	67.5	280	28	M20	15	550	580	680
315S	2	508	254	419	216	65	20	20	67.5	280	28	M20						
315M	4, 6, 8, 10			508	254	406	216	65	170	22	71	315	28	M20	16	635	645	800
315L	2	508	216	406	216	80	170	22	71	315	28	M20						
355M	4, 6, 8, 10	610	305	560	254	80	140	18	71	355	35	M24	17	730	710	880	1270	1425
355L	2			630	254	80	170	22	71	71								355
	4, 6, 8, 10	610	305	560	254	80	140	20	71	355	35	M24	18	730	710	880	1270	1425
	4, 6, 8, 10	610	305	560	254	95	170	25	86	355	35	M24	19	730	710	880	1300	1485
	4, 6, 8, 10	610	305	560	254	75	140	20	67.5	355	35	M24	20	730	710	880	1270	1425
	4, 6, 8, 10	610	305	560	254	95	170	25	86	355	35	M24	21	730	710	880	1300	1485

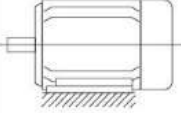
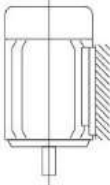
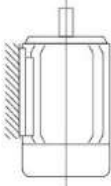
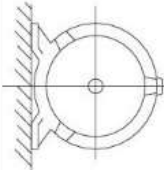
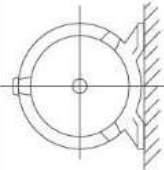
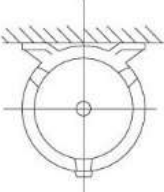
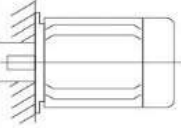
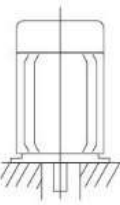
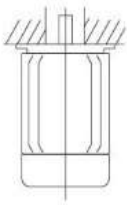
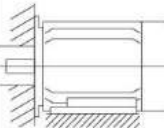
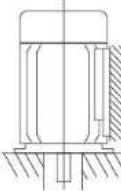
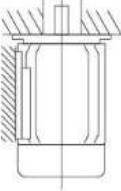
DIMENSIONS MOUNT **B35**



FS 63-355
NOTES: FS 63-90 motor without eyebolts

Frame size	Poles	Mounting Dimensions																	OVERALL DIMENSIONS					
		A	A/2	B	C	D	E	F	G	H	K	M	N	P	R	S	T	Flange holes	DB	GD	AB	AC	HD	L
63M	2.4	100	50	80	40	11	23	4	8.5	63	7	115	95	140		10	3	M4	4	135	130	180	230	255
71M	2.4.6	112	56	90	45	14	30	5	11	71		130	110	160				M5	5	150	145	195	255	290
80M		125	62.5	100	50	±1.5	19	40	6	80		165	130	200	±1.5		3.5	M6	6	165	175	220	295	340
90S		100		100							10					12		M8		180	195	250	320	375
90L		140	70	125	56	24	50		8	90										180	195	250	345	400
100L		160	80	140	63		28		0	100		215	180	250			-0.430	M10	7	205	215	270	385	450
112M		190	95	140	70	±2.0	60		-0.036	112		265	230	300	±2.0	15	4			230	240	300	400	465
132S		216	108	140	89		38			132	0.5			300				M12		270	275	345	470	555
132M		216	108	178								265	230	300						270	275	345	470	555
160M		254	127	210	108		42		-0.018	160		300	250	350	±3.0			M16	8	320	330	420	615	730
160L		254	127	254					-0.002			300	250	350						320	330	420	670	785
180M		279	139.5	241	121	±3.0	48		110	180		300	250	350	±3.0		0	M16	9	355	380	455	700	815
180L		279	139.5	279								350	300	400			-0.120			355	380	455	740	855
200L		318	159	305	133		55		16	200		350	300	400						395	420	505	770	885
225S	4.8			286			60		140	225		400	350	450						435	470	560	820	935
225M	4.8	356	178	311	149		55		110			400	350	450		19	-0.520			435	470	560	845	990
250M	2	406	203	349	168		60		18	250					0					490	510	615	910	1055
280S	2	457	228.5	368			65		140			500	450	550						490	510	615	910	1055
280M	4.8			419			65		18	280		500	450	550						550	580	680	985	1130
315S	2	406		406		±4.0	65		18						±4.0					550	580	680	1035	1180
315M	4.8	508	254	457	216		65		140	315	0.5	600	550	660						635	645	800	1270	1425
315L	4.8			406			65		18			600	550	660						635	645	800	1270	1425
355M	2	560		560			65		140						±4.0					635	645	800	1270	1425
355L	4.8	610	305	560	254		65		140	355	0.5	740	680	800		24	6			7300	710	880	1500	1650
	2			560			75		170											7300	710	880	1500	1650
	4.8			630			75		170											7300	710	880	1500	1650

Mounting arrangements according to IEC 60034-7 standard

Mounting arrangements	Feet mounting without Flange					
	B3(IM1001)	V5(IM1011)	V6(IM1031)	B6(IM1051)	B7(IM1061)	B8(IM1071)
Range	H63~H355	H63~H160	H63~H160	H63~H160	H63~H160	H63~H160
Diagram						
Mounting arrangements	Large flange mounting without feet			Large flange and mounting		
	B5(IM3001)	V1(IM3011)	V3(IM3031)	B35(IM2001)	V15(IM2011)	V36(IM2031)
Range	H63~H280	H63~H355	H63~H160	H63~H355	H63~H160	H63~H160
Diagram						
Mounting arrangements	Small flange mounting without feet			Small flange and feet mounting		
	B14(IM3601)	V18(IM3611)	V19(IM3631)	B34(IM2101)	V58(IM2111)	V69(IM2131)
Range	H63~H132	H63~H132	H63~H132	H63~H132	H63~H132	H63~H132
Diagram	