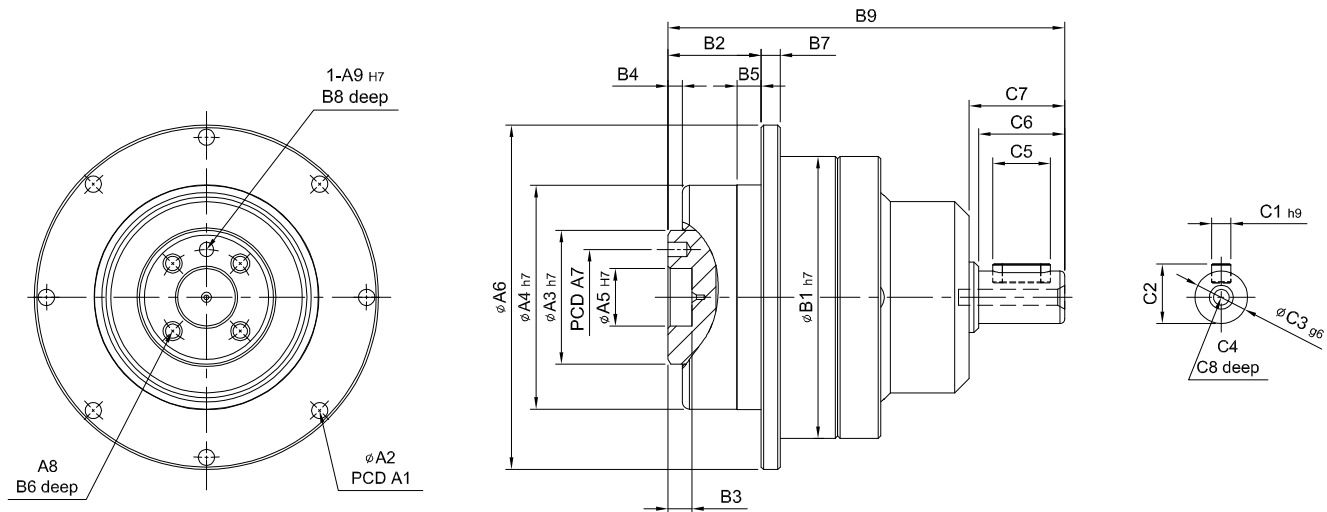


MODEL : SDD

單段 1-Stage

RATIO : 4, 5, 7, 10



unit: mm

| Model Code | 47 | 64 | 90 | 110 | 140 | 200 | 255 | |
|------------|----|---------------|---------------|---------------|----------------|-----------------|-----------------|----------------|
| A | A1 | 67 | 79 | 109 | 135 | 168 | 233 | 280 |
| | A2 | 8-3.4 | 8-4.5 | 8-5.5 | 8-5.5 | 12-6.6 | 12-9.0 | 16-13.5 |
| | A3 | 28 | 40 | 63 | 80 | 100 | 160 | 180 |
| | A4 | 47 | 64 | 90 | 110 | 140 | 200 | 255 |
| | A5 | 12 | 20 | 31.5 | 40 | 50 | 80 | 100 |
| | A6 | 72 | 86 | 118 | 146 | 179 | 248 | 300 |
| | A7 | 20 | 31.5 | 50 | 63 | 80 | 125 | 140 |
| | A8 | 4 - M3 x P0.5 | 7 - M5 x P0.8 | 7 - M6 x P1.0 | 11 - M6 x P1.0 | 11 - M8 x P1.25 | 11 - M10 x P1.5 | 12 - M16 x 2.0 |
| | A9 | 3 | 5 | 6 | 6 | 8 | 10 | 1 |
| B | B1 | 59 | 70 | 98 | 125 | 156 | 212 | 255 |
| | B2 | 19.5 | 19.5 | 30 | 29 | 38 | 50 | 66 |
| | B3 | 5 | 7 | 12 | 12 | 12 | 16 | 20 |
| | B4 | 1.5 | 4 | 6 | 6 | 6 | 8 | 1 |
| | B5 | 5 | 6 | 10 | 10 | 15 | 15 | 20 |
| | B6 | 6.5 | 8 | 12 | 12 | 16 | 22 | 32 |
| | B7 | 4 | 5 | 7 | 8 | 10 | 12 | 1 |
| | B8 | 4 | 6 | 6 | 7 | 7 | 10 | 10 |
| | B9 | 83 | 99 | 134 | 160 | 195 | 252 | 322.5 |
| C | C1 | 4 | 5 | 5 | 6 | 10 | 12 | 16 |
| | C2 | 12.5 | 16 | 18 | 24.5 | 35 | 43 | 59 |
| | C3 | 11 | 14 | 16 | 22 | 32 | 40 | 55 |
| | C4 | M4 x P0.7 | M5 x P0.8 | M6 x P1.0 | M8 x P1.25 | M12 x P1.75 | M14 x P2.0 | M16 x P2.0 |
| | C5 | 12 | 20 | 20 | 30 | 40 | 50 | 75 |
| | C6 | 18 | 24 | 28 | 36 | 50 | 60 | 85 |
| | C7 | 20 | 26.3 | 31.5 | 40 | 54 | 65 | 90 |
| | C8 | 8 | 10 | 12 | 16 | 24 | 28 | 32 |

High Precision Planetary Reducer

| 規格 Model No. | 代號 | 單位 Unit | 速比 Ratio | 47 | 64 | 90 | 110 | 140 | 200 | 255 |
|---|------------|------------|-------------|---|-------|--------|--------|--------|--------|---------|
| 額定輸出扭矩 Rated Output Torque (Nominal output torque) | T_{2N} | Nm | 4 | 22 | 60 | 160 | 335 | 650 | 1,200 | 2, |
| | | | 5 | 20 | 50 | 155 | 333 | 618 | 1,189 | 2,010 |
| | | | 7 | 19 | 47 | 142 | 309 | 573 | 1,108 | 1,870 |
| | | | 10 | 16 | 43 | 136 | 294 | 549 | 1,059 | 1,779 |
| 最大加速扭矩 Max. Acceleration Torque | T_{2B} | Nm | 4 ~ 10 | 1.8 倍額定輸出力矩 1.8 Times of Rated Output Torque | | | | | | |
| 最大輸出扭矩 Max. Output Torque 急停扭矩 Emergency Stop Torque | T_{2NOT} | Nm | 4 ~ 10 | 倍額定輸出力矩 3 Times of Rated Output Torque | | | | | | |
| 額定輸入轉速 Rated Input Speed | n_{1N} | rpm | 4 ~ 10 | 3,000 | 3,000 | 3,000 | 3,000 | 3,000 | 3,000 | 2,000 |
| 最大輸入轉速 Max. Input Speed | n_{1B} | rpm | 4 ~ 10 | 6,000 | 6,000 | 6,000 | 6,000 | 5,000 | 4,000 | 3,000 |
| 背隙 Backlash Ps | | arcmin | 4 ~ 10 | - | - | ≤ 1 | ≤ 1 | ≤ 1 | ≤ 1 | ≤ 1 |
| 背隙 Backlash P0 | | arcmin | 4 ~ 10 | ≤ 3 | ≤ 3 | ≤ 3 | ≤ 3 | ≤ 3 | ≤ 3 | ≤ 3 |
| 背隙 Backlash P1 | | arcmin | 4 ~ 10 | ≤ 5 | ≤ 5 | ≤ 5 | ≤ 5 | ≤ 5 | ≤ 5 | ≤ 5 |
| 背隙 Backlash P2 | | arcmin | 4 ~ 10 | ≤ 7 | ≤ 7 | ≤ 7 | ≤ 7 | ≤ 7 | ≤ 7 | ≤ 7 |
| 扭轉剛性 Torsional Rigidity | | Nm/arcmin | 4 ~ 10 | 6 | 14 | 30 | 86 | 155 | 450 | 1,12 |
| 容許徑向力 Max. Radial Force 滾珠軸承 Ball Bearing | F_{2rB} | N | 4 ~ 10 | 2,040 | 2,520 | 8,460 | 12,720 | 14,070 | 35,200 | 39,600 |
| 容許軸向力 Max. Axial Force 滾珠軸承 Ball Bearing | F_{2aB} | N | 4 ~ 10 | 1,020 | 1,260 | 4,230 | 6,360 | 7,035 | 17,600 | 19,800 |
| 容許徑向力 Max. Radial Force 滾錐軸承 Taper Bearing | F_{2rB} | N | 4 ~ 10 | - | - | 14,660 | 23,000 | 37,200 | 73,600 | 107,200 |
| 容許軸向力 Max. Axial Force 滾錐軸承 Taper Bearing | F_{2aB} | N | 4 ~ 10 | - | - | 7,330 | 11,500 | 18,600 | 36,800 | 53,600 |
| 最大傾斜力矩 Max. Tilting Moment 滾珠軸承 Ball Bearing ※ | M_{2K} | Nm | 4 ~ 10 | 31 | 98 | 185 | 320 | 940 | 2,200 | 4,300 |
| 最大傾斜力矩 Max. Tilting Moment 滾錐軸承 Taper Bearing ※ | M_{2K} | Nm | 4 ~ 10 | - | - | 280 | 480 | 1,400 | 3,300 | 6,480 |
| 使用壽命 Service Life | L_H | hr | 4 ~ 10 | S5 周期運轉 : >30,000 (S1 連續運轉 : >15,000 hrs) S5 Cycle Operation: >30,000 (S1 Continuous Operation: >15,000 hrs) | | | | | | |
| 效率 Efficiency | η | % | 4 ~ 10 | ≥ 97% | | | | | | |
| 使用溫度 Operating Temperature | | °C | 4 ~ 10 | - 25° C ~ + 90° C | | | | | | |
| 潤滑 Lubrication | | | 4 ~ 10 | 全合成潤滑油脂 Synthetic Grease | | | | | | |
| 防護等級 Protection Class | | | 4 ~ 10 | IP65 | | | | | | |
| 安裝方向 Mounting Position | | | 4 ~ 10 | 任意方向 Any | | | | | | |
| 噪音值 Noise Level | | dB | 4 ~ 10 | ≤ 56 | ≤ 58 | ≤ 60 | ≤ 63 | ≤ 65 | ≤ 67 | ≤ 70 |
| 重量 Weight ±3% | | Kg | 4 ~ 10 | 0.71 | 1.3 | 3.6 | 6.2 | 12 | 32 | 53 |

※Applied to the output shaft center at 100 rpm.

■ 轉動慣量 Mass Moments of Inertia (kg.cm²)

| Ratio | 47 | 64 | 90 | 110 | 140 | 200 | 255 |
|-------|------|------|------|------|------|-------|-------|
| 4 | 0.03 | 0.13 | 0.47 | 2.75 | 7.46 | 24.00 | 55 |
| 5 | 0.03 | 0.12 | 0.45 | 2.70 | 7.41 | 23.23 | 53.19 |
| 7 | 0.03 | 0.12 | 0.45 | 2.64 | 7.12 | 22.11 | 50.78 |
| 10 | 0.03 | 0.12 | 0.43 | 2.56 | 7.01 | 22.21 | 50.50 |