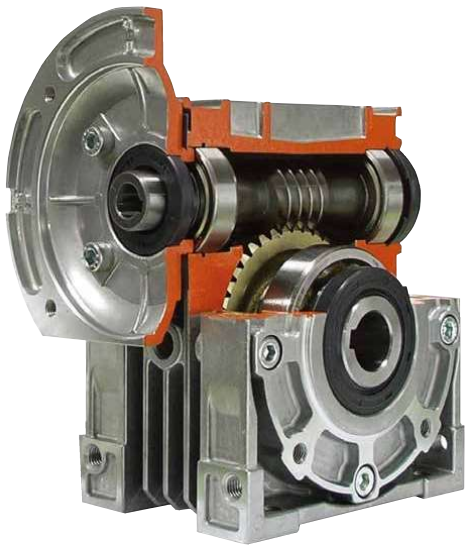


Aluminum Alloy Worm Reducer

Features of NE Series

NE 系列產品特性



NE 系列鋁合金蝸輪減速機，是本公司原有 E 系列的基礎上開發而成的新一代產品，機體用優質的鋁合金壓鑄成形，體積小、散熱快、表面經皮膜處理不生鏽，美觀耐用。蝸桿使用鉻鉬合金鋼 (SCM415)，經滲碳熱處理及研磨，傳動平穩，噪音小、輸出扭矩大，可適應全方位安裝。

The NE series aluminum alloy worm reducers are a new generation of products launched on the basis of the E Series products available in LI MING. The compact aluminum alloy extruded body features good dissipation. The surface undergoing electrotype is aesthetic and stainless. The worm shaft is made of Chromium-Molybdenum alloy steel (SCM415). After acieration and polishing, the worm shaft delivers smooth transmission in minimum noise and maximum torque. Making it apt for all-purpose installations.

Indication of Model Numbers

機種型號表示

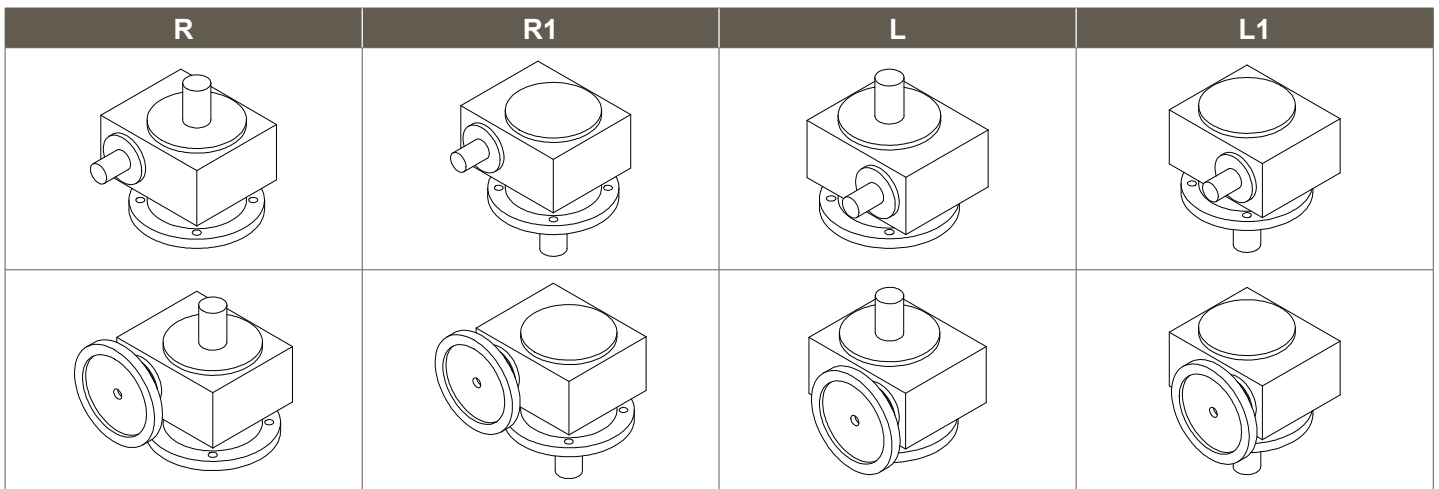
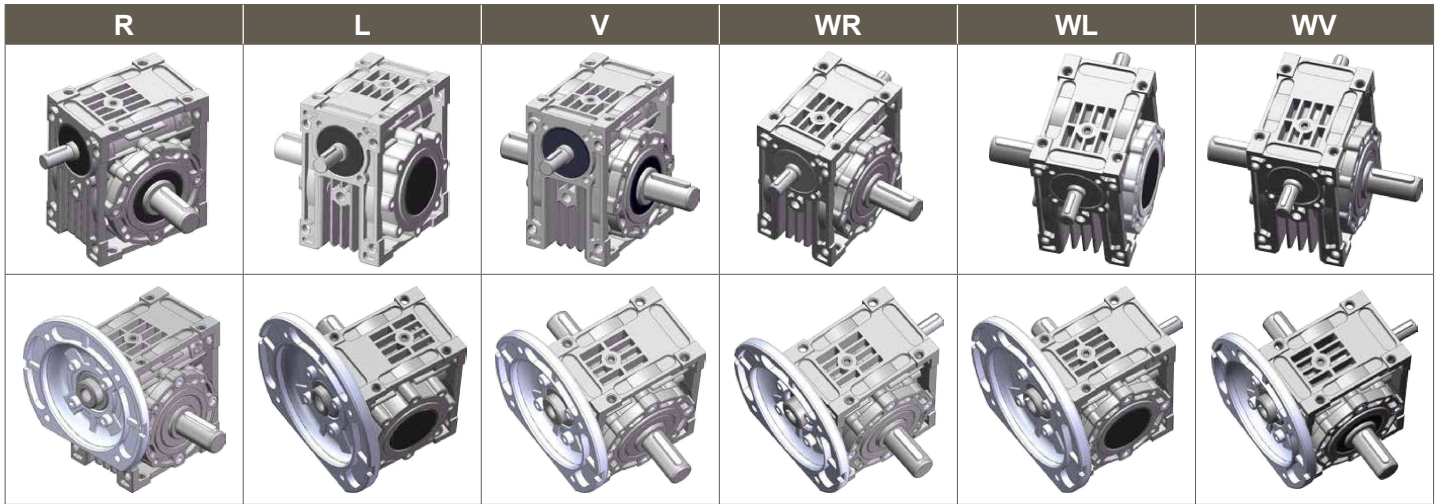
NE	50	10	1	R
減速機型 Type	型號 Model	減速比 Ratio	馬力 Horse Power	軸向 Shaft Direction
NE	30	1/5	40W	R
NEO	40	1/10	60W	L
NEM	50	1/15	90W	V
NEOM	60	1/20	1/4HP	WR
NEF	70	1/30	1/2HP	WL
NEOF		1/40	1HP	WV
NEFM		1/50	2HP	
NEOFM		1/60		
NEH		※1/25		
NEHM		※1/45		
NEOH		※1/80		
NEOHM		※1/100		

Note:

1. ※ 特殊品。 ※ means special specification.

2. 有些型號之減速比非正整數。 Some ratios are not positive integer.

軸向 Shaft Direction



- R : 右軸 (腳座貼地面·輸入端面向自己·此時輸出端位於右側)
- L : 左軸 (腳座貼地面·輸入端面向自己·此時輸出端位於左側)
- V : 單入力軸雙出力軸
- W : 雙入力軸單出力軸
- WV : 雙入力軸和雙出力軸
- S : 特殊軸 (訂貨時請註明或附圖面)

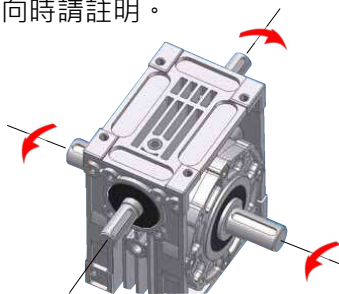
- R : Right Shaft (when facing input shaft and foot on the ground, output shaft is on the right)
- L : Left Shaft (when facing input shaft and foot on the ground, output shaft is on the left)
- V : Single Input Shaft & Double Output Shaft
- W : Double Input Shaft & Single Output Shaft
- WV : Double Input Shaft & Single Output Shaft
- S : Special shaft (Please specify your need clearly or attach drawing)

旋向 Rotary Direction

設計上蝸桿使用右旋牙·如入力軸以順時針方向旋轉時·出力軸方向旋轉·請參考圖 1 圖 2·如需特殊旋向時請註明·

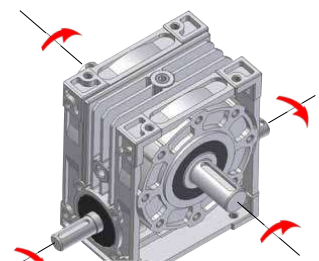
upper worm for right-directed thread, so the input shaft is rotating clockwise and the output shaft see image 1 and image 2 ; for any rotating direction required, be sure to specify it.

<圖 1>
<Image 1>



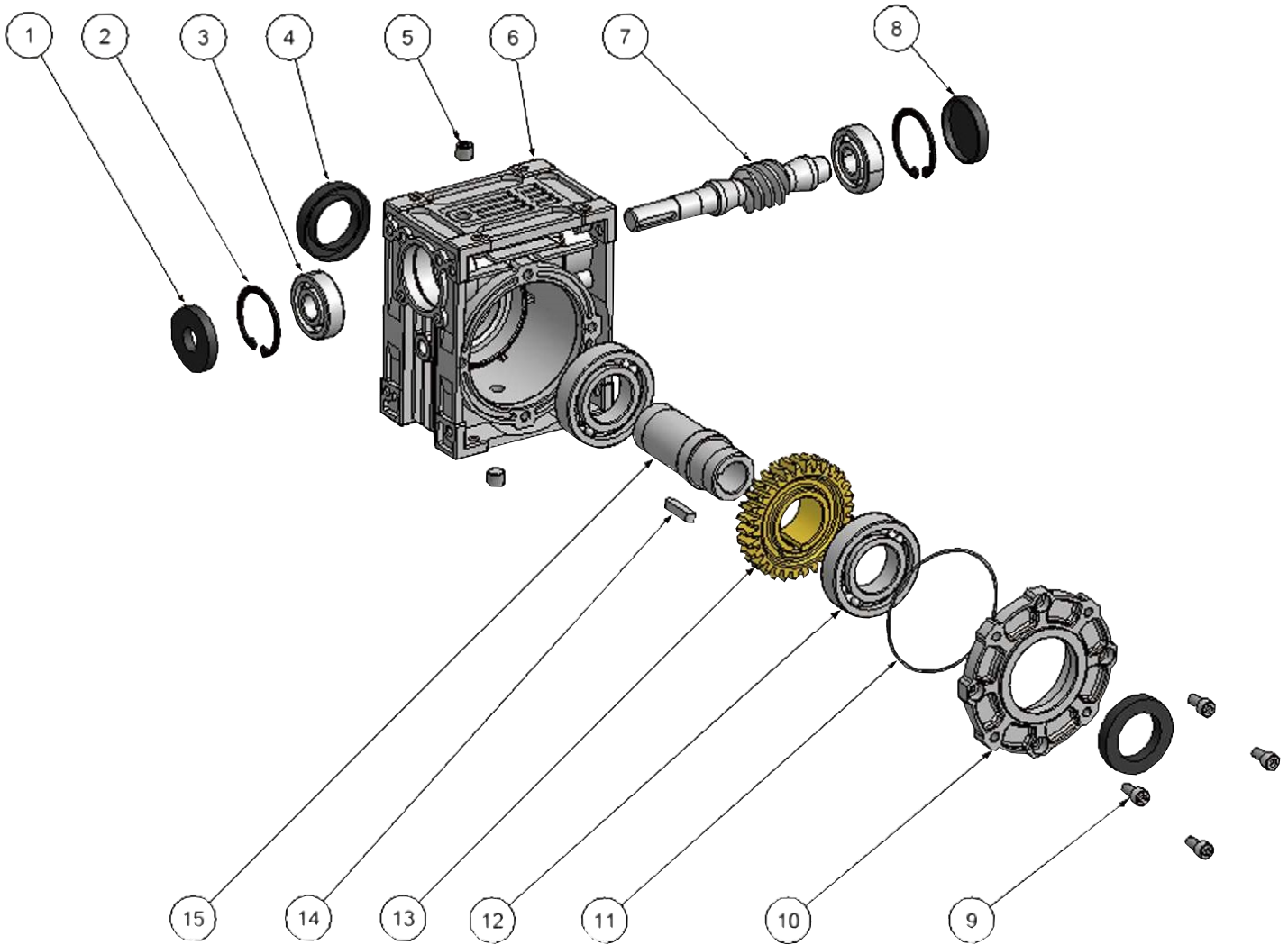
旋轉方向

<圖 2>
<Image 2>



分解系統圖 System Drawing

MODEL : NEO



NO.	零件名稱	Name of Parts	NO.	零件名稱	Name of Parts
1	油封 SC	Oil Seal SC	9	六角承窩頭螺絲	Hex Screw
2	R 扣環	Snap Ring	10	出力軸蓋	Output Shaft Cover
3	滾珠軸承 ZZ	Ball Bearing ZZ	11	O 形環	O-Ring
4	油封 TC	Oil Seal TC	12	滾珠軸承	Ball Bearing
5	油栓 PT	Plug PT	13	蝸輪	Worm Wheel
6	蝸輪箱	Outer Shell	14	雙圓鍵	Key
7	蝸桿	Worm Shaft	15	出力軸	Output Shaft
8	密式油封	Seal			

材質說明：

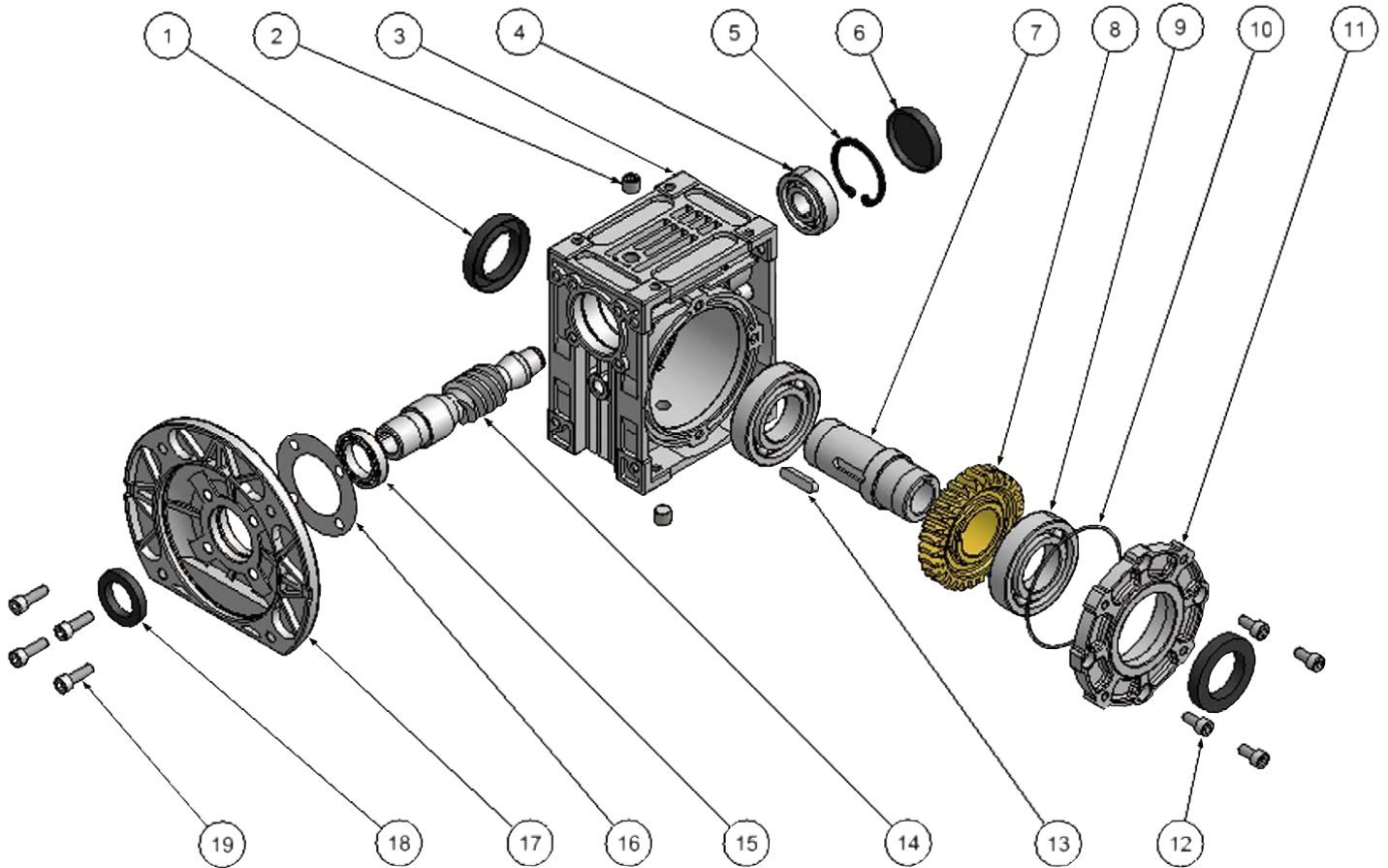
- 蝸輪箱、出力軸蓋：壓鑄鋁 ALADC-12，本體一體壓鑄、強度強、重量輕、外型美觀、散熱好。
- 出力軸：S45C 中碳鋼，CNC 車床精密加工研磨。
- 蝸輪：鋁青銅 ALBC3，CNC 車床精密加工，成形專用刀具切削磨擦係數小、壽命長。
- 蝸桿：SCM415 綠十字，CNC 車床精密加工，精密滾齒機切削，滲碳後經齒形研磨，齒形正確齒面平滑，無雜音、壽命長。

Material :

- Outer shell & output shaft cover : Cast aluminum ALADC-12, alone-piece cast, rigid, lightweight, aesthetic and sound dissipation.
- Output shaft : S45C medium carbon steel, CNC lathe machining.
- Worm wheel : ALBC3, CNC precision lathe machining, shaping cutting blade of minimum cutting coefficient and extended service life.
- Worm shaft : SCM415 green cross, CNC precision lathe machining, gear grinding after cutting and carburizing with precision gear grinding,

分解系統圖 System Drawing

MODEL : NEOM



NO.	零件名稱	Name of Parts	NO.	零件名稱	Name of Parts
1	油封 TC	Oil Seal TC	11	出力軸蓋	Output Shaft Cover
2	油栓 PT	Plug PT	12	六角承窩頭螺絲	Hex Screw
3	蝸輪箱	Outer Shell	13	雙圓鍵	Key
4	滾珠軸承 ZZ	Ball Bearing ZZ	14	蝸桿	Worm Shaft
5	R 扣環	Snap Ring	15	滾珠軸承 ZZ	Ball Bearing ZZ
6	密式油封	Seal	16	非石棉墊片	Asbestos Free Gasket
7	出力軸	Output Shaft	17	馬達連結盤	Motor Flange
8	蝸輪	Worm Wheel	18	油封 SC	Oil Seal SC
9	滾珠軸承	Ball Bearing	19	六角承窩頭螺絲	Hex Screw
10	O 形環	O-Ring			

材質說明：

- 蝸輪箱、出力軸蓋：壓鑄鋁 ALADC-12，本體一體壓鑄、強度強、重量輕、外型美觀、散熱好。
- 出力軸：S45C 中碳鋼，CNC 車床精密加工研磨。
- 蝸輪：鋁青銅 ALBC3，CNC 車床精密加工，成形專用刀具切削磨擦係數小、壽命長。
- 蝸桿：SCM415 綠十字，CNC 車床精密加工，精密滾齒機切削，滲碳後經齒形研磨，齒形正確齒面平滑，無雜音、壽命長。

Material :

- Outer shell & output shaft cover : Cast aluminum ALADC-12, alone-piece cast, rigid, lightweight, aesthetic and sound dissipation.
- Output shaft : S45C medium carbon steel, CNC lathe machining.
- Worm wheel : ALBC3, CNC precision lathe machining, shaping cutting blade of minimum cutting coefficient and extended service life.
- Worm shaft : SCM415 green cross, CNC precision lathe machining, gear grinding after cutting and carburizing with precision gear grinding,

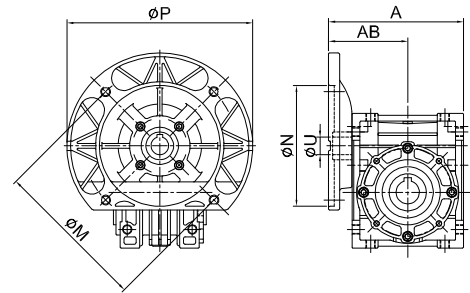
減速機參數 Reducers Parameter

馬達 Motor : 4P/60Hz 輸入轉速 Input R.P.M. = 1700 RPM

(安全係數 1.0 以下為輕負荷。The reducer is used for light loading when SF below 1.0.)

OR= 輸出轉速 Output R.P.M. (RPM) . IH= 輸入馬力 Input HP (kW) . OT= 輸出扭力 Output Torque (Kg-m) . SF= 安全係數 Safety Factor

型號 Mode	減速比 Ratio		5		10		15		20		30		40		50		60	
	OR		340		170		113		85		56		42		34		28	
	IH	OT	SF	OT	SF	OT	SF	OT	SF	OT	SF	OT	SF	OT	SF	OT	SF	
30	0.04	0.09	8.8	0.16	5.4	0.24	4.8	0.28	3.4	1.42	3.2	0.45	2.2	0.6	1.6	0.76	1.3	
	0.06	0.13	6.0	0.25	3.6	0.40	3.2	0.43	2.3	0.63	2.1	0.68	1.4	1.02	1.1	1.12	0.9	
	0.09	0.22	4.0	0.43	2.4	0.61	2.1	0.74	1.5	1.05	1.4	1.16	1.0	-	-	-	-	
40	0.18	0.47	4.4	0.90	2.7	1.32	2.3	1.60	1.6	2.31	1.4	2.81	1.1	3.46	0.9	3.65	0.7	
	0.37	0.94	2.2	1.80	1.4	2.64	1.2	3.20	1.0	4.62	0.7	-	-	-	-	-	-	
50	0.18	0.48	6.8	0.94	5.2	1.35	3.6	1.74	2.8	2.39	2.2	2.98	1.7	3.41	1.3	3.84	1.1	
	0.37	0.96	3.3	1.88	2.5	2.70	1.8	3.48	1.3	4.78	1.1	5.96	0.9	6.82	0.6	-	-	
	0.75	1.92	1.6	3.76	1.3	5.41	1.0	6.97	0.7	9.57	0.5	-	-	-	-	-	-	
60	0.37	0.96	4.8	1.89	4.0	2.74	2.8	3.48	2.1	4.85	1.6	6.04	1.3	7.56	1.1	7.93	0.9	
	0.75	1.93	2.3	3.78	2.0	5.41	1.4	6.97	1.1	9.70	0.8	12.0	0.6	15.1	0.5	-	-	
	1.5	3.86	1.2	7.56	1.0	10.9	0.7	-	-	-	-	-	-	-	-	-	-	
70	0.37	0.95	7.0	1.84	5.1	2.67	3.4	3.52	3.0	4.77	1.8	6.23	1.6	7.48	1.2	8.73	1.0	
	0.75	1.90	3.4	3.69	2.5	5.35	1.7	7.05	1.5	9.54	0.9	10.9	1.3	14.9	0.6	17.4	0.5	
	1.5	3.81	1.7	7.38	1.3	10.7	0.9	14.1	0.7	19.0	0.4	24.9	0.3	-	-	-	-	

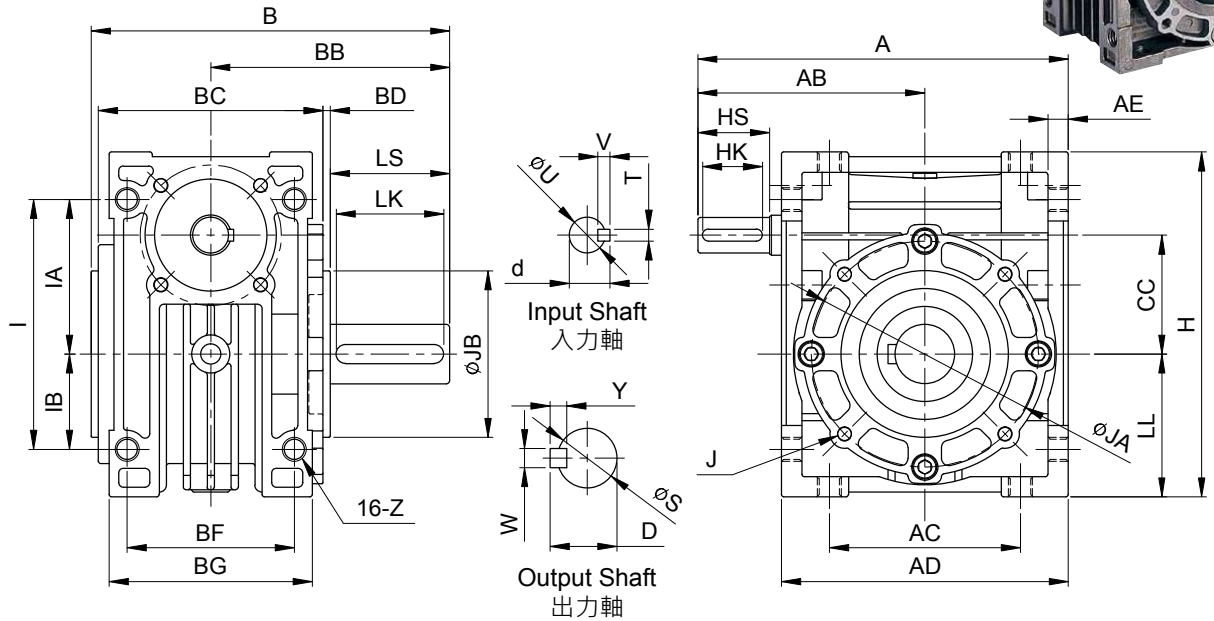
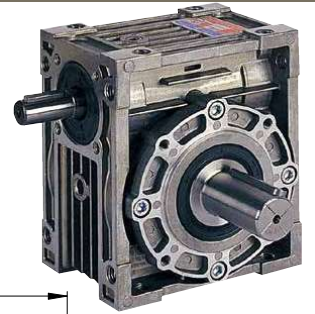


馬達規格選配 Selection of Motor Size

unit: mm

型號 Model	安裝規格 Size							減速比 Ratio									
	法蘭型號 Flange Model	馬力 HP	N	M	P	A	AB	5	10	15	20	30	40	50	60	80	100
								馬達軸心尺寸 Motor Shaft Dimension ØU									
30	40W·60W		83	104	□90	98	58	11	11	11	11	11	11	11	11		
	90W	1/8	83	104	□90	98	58	11	11	11	11	11	11				
	63B14	1/4	60	75	90	98	58	11	11	11	11	11					
	63B	1/4	95	115	140	98	58	11	11	11	11	11					
40	63B14	1/4	60	75	90	124	73	11	11	11	11	11	11	11	11	11	11
	63B	1/4	95	115	140	124	73	11	11	11	11	11	11	11	11	11	11
	63	1/4	110	130	160	124	73	11	11	11	11	11	11	11	11	11	11
	71B14	1/2	70	85	105	124	73	14	14	14	14	14					
	71	1/2	110	130	160	124	73	14	14	14	14	14					
50	56C	1/2	114.3	149.3	166	137	86	15.875	15.875	15.875	15.875	15.875					
	63B	1/4	95	115	140	141	81	11	11	11	11	11	11	11	11	11	11
	63	1/4	110	130	160	141	81	11	11	11	11	11	11	11	11	11	11
	71B14	1/2	70	85	105	141	81	14	14	14	14	14	14	14	14		
	71	1/2	110	130	160	141	81	14	14	14	14	14	14	14			
	80B14	1	80	100	120	148	88	19	19	19	19	19					
	80	1	130	165	200	148	88	19	19	19	19	19					
60	56C	1/2	114.3	149.3	166	155	95	15.875	15.875	15.875	15.875	15.875	15.875	15.875	15.875	15.875	
	71	1/2	110	130	160	167	94	14	14	14	14	14	14	14	14	14	14
	80B14	1	80	100	120	174	101	19	19	19	19	19	19	19	19		
	80	1	130	165	200	174	101	19	19	19	19	19	19	19	19		
	90L	2	130	165	200	174	101	24	24	24							
70	56C	3/4	114.3	149.3	166	183	109	15.875	15.875	15.875	15.875	15.875	15.875	15.875	15.875		
	71	1/2	110	130	160	196	111	14	14	14	14	14	14	14	14	14	14
	80	1	130	165	200	198	113	19	19	19	19	19	19	19	19		
	90B14	2	95	115	140	198	113	24	24	24	24	24	24				
	90L	2	130	165	200	198	113	24	24	24	24	24	24				

MODEL : NE



unit: mm

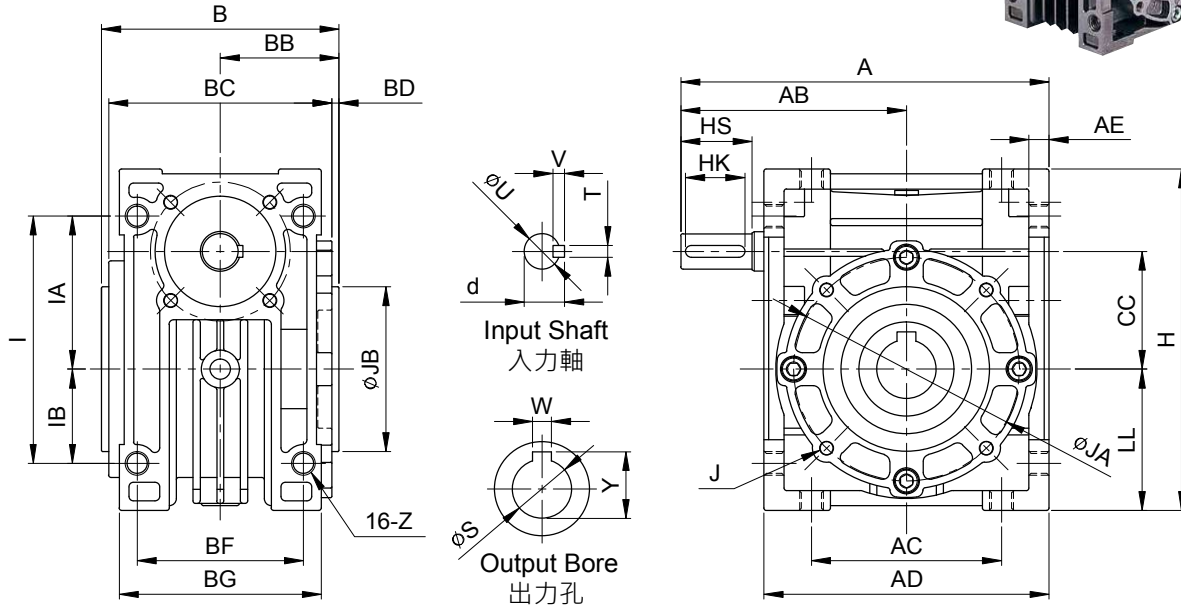
型號 Model	減速比 Ratio	馬力 HP	A	AB	AC	AD	AE	B	BB	BC	BD	BF	BG	CC	LL	H	I	IA	IB	Z
30	5~60	40W・60W	105	65	55	80	6	99.5	67.5	60	2	45	58	30	40	98	72	45	27	M6
	5~40	90W																		
	5~30	1/4																		
40	5~60	1/4	131	80	70	102	7.5	127	85	80	2	60	72	40	50	122	90	55	35	M8
	5~30	1/2																		
50	5~60	1/4	155	95	80	120	8.5	150	100	94	3	70	85	50	60	145	105	65	40	M10
	5~50	1/2																		
	5~30	1																		
60	5~60	1/2	193	120	100	146	10	159	105	102	3	85	102	60	75	180	136	83	53	M10
	5~50	1																		
	5~15	2																		
70	5~60	1/2	225	140	120	170	12	187	125	118	3	90	110	70	85	200	150	90	60	M10
	5~60	1																		
	5~40	2																		

型號 Model	減速比 Ratio	馬力 HP	入力軸 Input Shaft				出力軸 Output Shaft							重量 Weight (kg)
			HS	U	d	TxVxHK	LS	S	D	WxYxLK	JA	JB	Jx 牙深 Deep	
30	5~60	40W・60W	20	11	12.5	4x4x16	35	16	18	5x5x30	65	55	8-M6-9	1.28
	5~40	90W												
	5~30	1/4												
40	5~60	1/4	25	12	13.5	4x4x20	40	20	22.5	6x6x35	77	60	12-M6-9	2.46
	5~30	1/2												
50	5~60	1/4	30	15	17	5x5x25	50	25	28	8x7x45	95	70	12-M6-9	4.13
	5~50	1/2												
	5~30	1												
60	5~60	1/2	40	18	20.5	6x6x35	50	25	28	8x7x45	120	80	12-M8-12	6.35
	5~50	1												
	5~15	2												
70	5~60	1/2	45	22	25	7x7x40	60	30	33	8x7x55	140	90	12-M10-15	9.9
	5~60	1												
	5~40	2												

ALUMINUM ALLOY REDUCER SERIES

鋁合金蝸輪減速機系列

MODEL : NEO

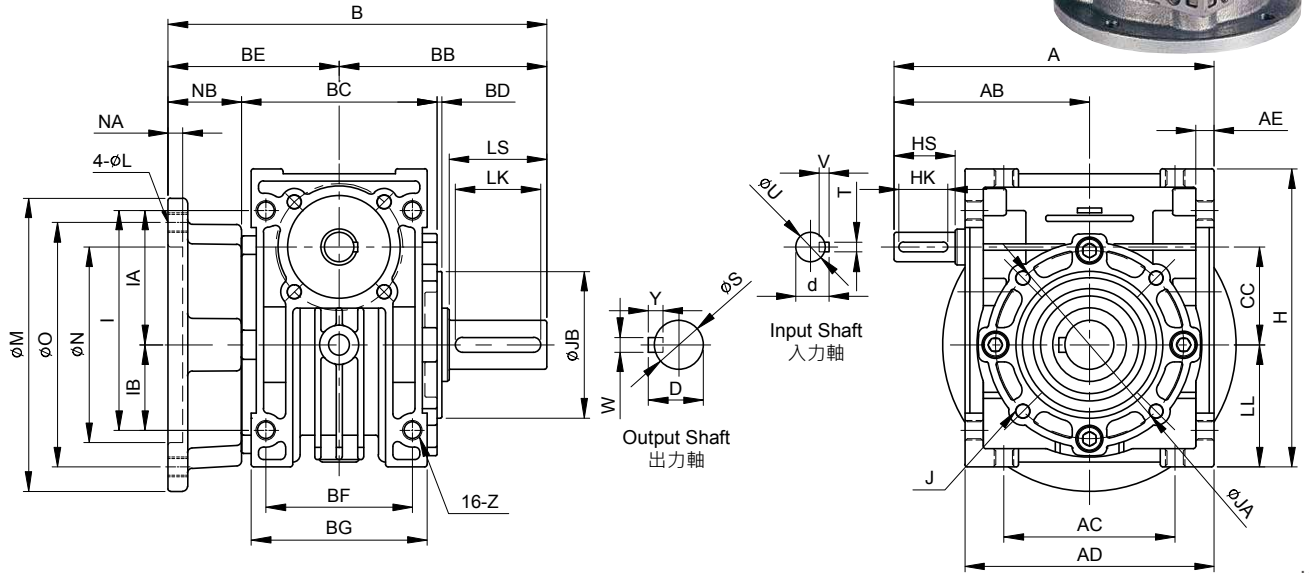


unit: mm

型號 Model	減速比 Ratio	馬力 HP	A	AB	AC	AD	AE	B	BB	BC	BD	BF	BG	CC	LL	H	I	IA	IB	Z
30	5~60	40W · 60W	105	65	55	80	6	65	32.5	60	2	45	58	30	40	98	72	45	27	M6
	5~40	90W																		
	5~30	1/4																		
40	5~60	1/4	131	80	70	102	7.5	88	44	80	2	60	72	40	50	122	90	55	35	M8
	5~30	1/2																		
50	5~60	1/4	155	95	80	120	8.5	98	49	94	3	70	85	50	60	145	105	65	40	M10
	5~50	1/2																		
	5~30	1																		
60	5~60	1/2	193	120	100	146	10	108	54	102	3	85	102	60	75	180	136	83	53	M10
	5~50	1																		
	5~15	2																		
70	5~60	1/2	225	140	120	170	12	128	64	118	3	90	110	70	85	200	150	90	60	M10
	5~60	1																		
	5~40	2																		

型號 Model	減速比 Ratio	馬力 HP	入力軸 Input Shaft				出力孔 Output Bore						重量 Weight (kg)
			HS	U	d	TxVxHK	W	S	Y	JA	JB	Jx 牙深 Deep	
30	5~60	40W · 60W	20	11	12.5	4x4x16	5	14	16.3	65	55	8-M6-9	1.16
	5~40	90W											
	5~30	1/4											
40	5~60	1/4	25	12	13.5	4x4x20	6	20	22.8	77	60	12-M6-9	2.2
	5~30	1/2											
50	5~60	1/4	30	15	17	5x5x25	8	25	28.3	95	70	12-M6-9	3.59
	5~50	1/2											
	5~30	1											
60	5~60	1/2	40	18	20.5	6x6x35	8	25	28.3	120	80	12-M8-12	5.8
	5~50	1											
	5~15	2											
70	5~60	1/2	45	22	25	7x7x40	8	30	33.3	140	90	12-M10-15	9.04
	5~60	1											
	5~40	2											

MODEL : NEF



unit: mm

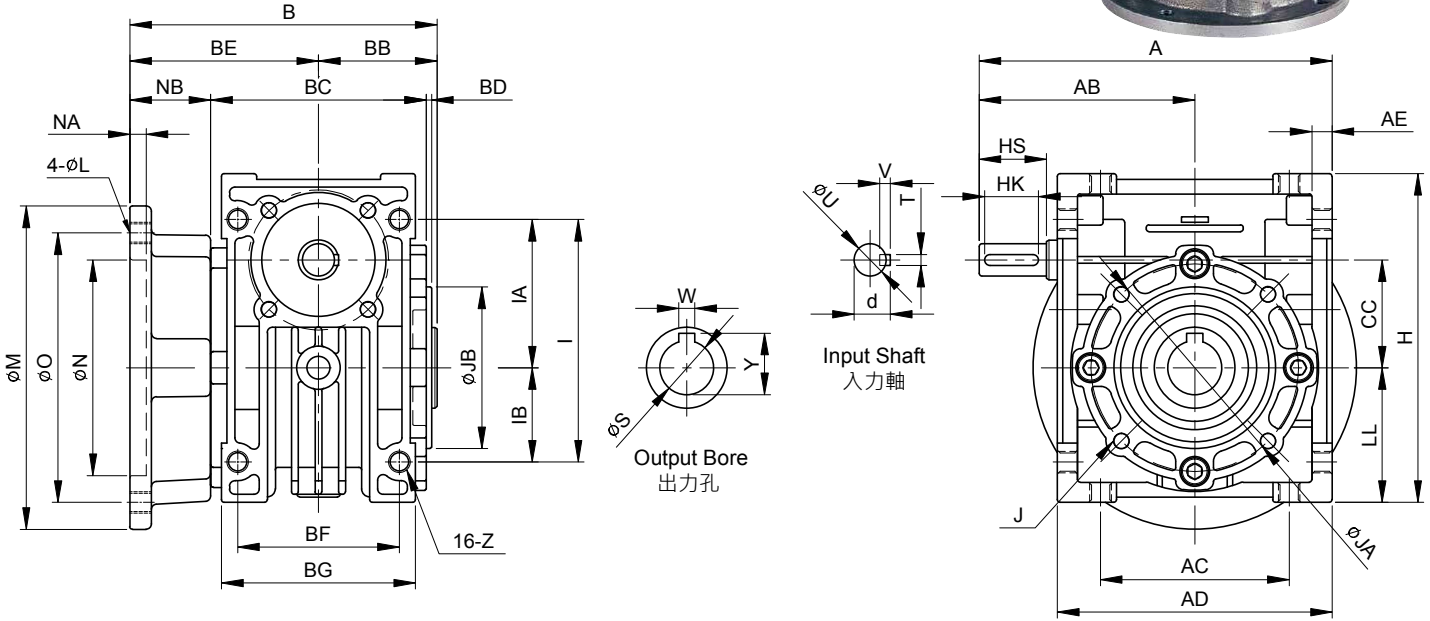
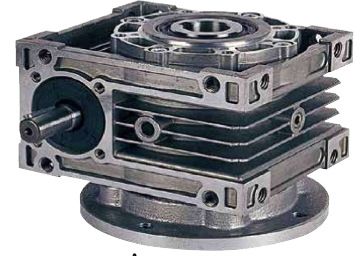
型號 Model	減速比 Ratio	馬力 HP	A	AB	AC	AD	AE	B	BE	NB	BB	BC	BD	BF	BG	CC	LL	H	I	IA	IB	Z
30	5~60	40W·60W	105	65	55	80	6	127.5	60	30	67.5	60	2	45	58	30	40	98	72	45	27	M6
	5~40	90W																				
	5~30	1/4																				
40	5~60	1/4	131	80	70	102	7.5	155	70	30	85	80	2	60	72	40	50	122	90	55	35	M8
	5~30	1/2																				
50	5~60	1/4	155	95	80	120	8.5	180	80	33	100	94	3	70	85	50	60	145	105	65	40	M10
	5~50	1/2																				
	5~30	1																				
60	5~60	1/2	193	120	100	146	10	205	100	49	105	102	3	85	102	60	75	180	136	83	53	M10
	5~50	1																				
	5~15	2																				
70	5~60	1/2	225	140	120	170	12	225	100	41	125	118	3	90	110	70	85	200	150	90	60	M10
	5~60	1																				
	5~40	2																				

型號 Model	減速比 Ratio	馬力 HP	入力軸 Input Shaft				出力法蘭及出力軸 Output Flange & Output Shaft												重量 Weight (kg)
			HS	U	d	TxVxHK	N	NA	O	M	L	LS	S	D	WxYxLK	JA	JB	Jx 牙深 Deep	
30	5~60	40W·60W	20	11	12.5	4x4x16	70	5	85	100	M6	35	16	18	5x5x30	65	55	4-M6-9	1.46
	5~40	90W																	
	5~30	1/4																	
40	5~60	1/4	25	12	13.5	4x4x20	80	6	100	120	M8	40	20	22.5	6x6x35	77	60	4-M6-9	2.7
	5~30	1/2																	
50	5~60	1/4	30	15	17	5x5x25	95	6	120	140	M10	50	25	28	8x7x45	95	70	4-M6-9	4.37
	5~50	1/2																	
	5~30	1																	
60	5~60	1/2	40	18	20.5	6x6x35	130	7	160	180	M10	50	25	28	8x7x45	120	80	4-M8-12	6.5
	5~50	1																	
	5~15	2																	
70	5~60	1/2	45	22	25	7x7x40	150	7	185	210	M12	60	30	33	8x7x55	140	90	4-M10-15	11.1
	5~60	1																	
	5~40	2																	

ALUMINUM ALLOY REDUCER SERIES

鋁合金蝸輪減速機系列

MODEL : NEOF



unit: mm

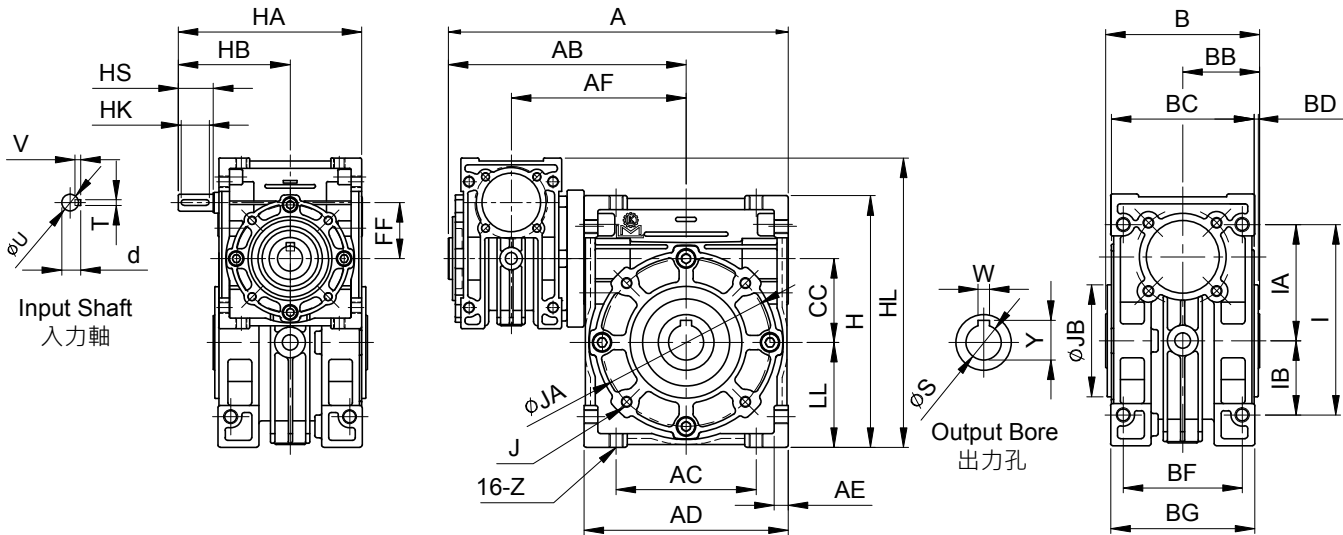
型號 Model	減速比 Ratio	馬力 HP	A	AB	AC	AD	AE	B	BE	NB	BB	BC	BD	BF	BG	CC	LL	H	I	IA	IB	Z
30	5~60	40W·60W	105	65	55	80	6	92.5	60	30	32.5	60	2	45	58	30	40	98	72	45	27	M6
	5~40	90W																				
	5~30	1/4																				
40	5~60	1/4	131	80	70	102	7.5	114	70	30	44	80	2	60	72	40	50	122	90	55	35	M8
	5~30	1/2																				
50	5~60	1/4	155	95	80	120	8.5	129	80	33	49	94	3	70	85	50	60	145	105	65	40	M10
	5~50	1/2																				
	5~30	1																				
60	5~60	1/2	193	120	100	146	10	154	100	49	54	102	3	85	102	60	75	180	136	83	53	M10
	5~50	1																				
	5~15	2																				
70	5~60	1/2	225	140	120	170	12	164	100	41	64	118	3	90	110	70	85	200	150	90	60	M10
	5~40	2																				

型號 Model	減速比 Ratio	馬力 HP	入力軸 Input Shaft				出力法蘭及出力孔 Output Flange & Output Shaft											重量 Weight (kg)
			HS	U	d	TxVxHK	N	NA	O	M	L	W	S	Y	JA	JB	Jx牙深 Deep	
30	5~60	40W·60W	20	11	12.5	4x4x16	70	5	85	100	M6	5	14	16.3	65	55	4-M6-9	1.33
	5~40	90W																
	5~30	1/4																
40	5~60	1/4	25	12	13.5	4x4x20	80	6	100	120	M8	6	20	22.8	77	60	4-M6-9	2.45
	5~30	1/2																
50	5~60	1/4	30	15	17	5x5x25	95	6	120	140	M10	8	25	28.3	95	70	4-M6-9	4.02
	5~50	1/2																
	5~30	1																
60	5~60	1/2	40	18	20.5	6x6x35	130	7	160	180	M10	8	25	28.3	120	80	4-M8-12	6.54
	5~50	1																
	5~15	2																
70	5~60	1/2	45	22	25	7x7x40	150	7	185	210	M12	8	30	33.3	140	90	4-M10-15	9.5
	5~40	2																

ALUMINUM ALLOY WORM REDUCER SERIES

鋁合金蝸輪減速機系列

MODEL : NEOH



出力段減速機中心距離 (mm) Central distance of output of reducer.	40	50	60	70
入力段減速機中心距離 (mm) Central distance of input of reducer.	30	30	40	50

unit: mm

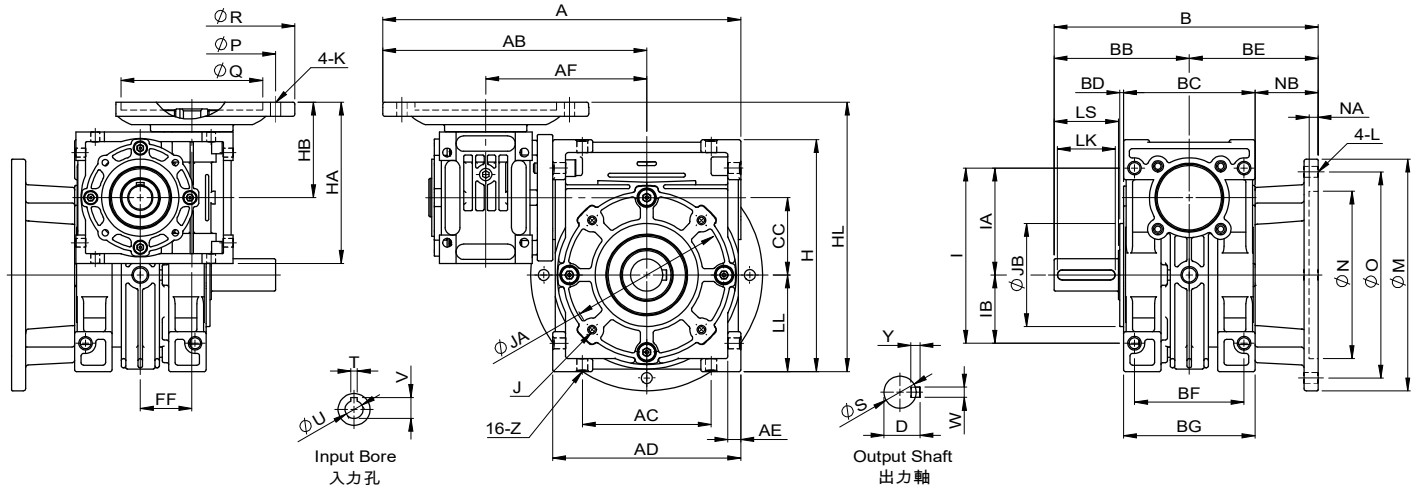
型號 Model	減速比 Ratio	馬力 HP	CC	FF	A	AB	AC	AD	AE	AF	B	BB	BC	BD	BF	BG	H	HA	HB	HL
40	100~3600	1/8(90W) 63B	40	30	176.5	125.5	70	102	7.5	93	88	44	80	2	60	72	122	105	65	148
50	100~3600	1/8(90W) 63B	50	30	194.5	134.5	80	120	8.5	102	98	49	94	3	70	85	145	105	65	168
60	100~3600	(1/4) 1/2	60	40	243	170	100	146	10	125	108	54	102	3	85	102	180	131	80	207
70	100~3600	(1/4) 1/2 1	70	50	280	195	120	170	12	145	128	64	118	3	90	110	200	155	95	240

型號 Model	減速比 Ratio	馬力 HP	I	IA	IB	LL	Z	入力軸 Input Shaft				出力孔 Output Shaft					重量 Weight (kg)	
								HS	U	d	TxVxHK	W	S	Y	JA	JB		Jx 牙深 Deep
40	100~3600	1/8(90W) 63B	90	55	35	50	M8	20	11	12.5	4x4x16	6	20	22.8	77	60	12-M6-9	3.56
50	100~3600	1/8(90W) 63B	105	65	40	60	M10	20	11	12.5	4x4x16	8	25	28.3	95	70	12-M6-9	4.96
60	100~3600	(1/4) 1/2	136	83	53	75	M10	25	12	13.5	4x4x20	8	25	28.3	120	80	12-M8-12	8.23
70	100~3600	(1/4) 1/2 1	150	90	60	85	M10	30	15	17	5x5x25	8	30	33.3	140	90	12-M10-15	14.1

雙段減速機以定轉速設計，最大扭力請參考「減速機參數」(第15頁)，() 為較安全選配馬力。

This 2-stage worm reducer is designed to rotate at fixed speed. We recommend to choose the HP inside () for safer choice. Please refer to

MODEL : NEFHM



出力段減速機中心距離 (mm) Central distance of output of reducer.	40	50	60	70
入力段減速機中心距離 (mm) Central distance of input of reducer.	30	30	40	50

unit: mm

型號 Model	減速比 Ratio	馬力 HP	CC	FF	A	AB	AC	AD	AE	AF	B	BE	NB	BB	BC	BD	BF	BG	H	HA	HB	HL	I	IA	IB	LL	Z
40	100~3600	1/8(90W)	40	30	189	138	70	102	7.5	93	155	70	30	85	80	2	60	72	122	98	58	148	90	55	35	50	M8
		63B			214	163														100	60	150					
50	100~3600	1/8(90W)	50	30	207	147	80	120	8.5	102	180	80	33	100	94	3	70	85	145	98	58	168	105	65	40	60	M10
		63B			232	172														100	60	170					
60	100~3600	(1/4)	60	40	278	205	100	146	10	125	205	100	49	105	102	3	85	102	180	125	74	209	136	83	53	75	M10
		1/2			310	225														142	82	237					
70	100~3600	(1/4)	70	50	310	225	120	170	12	145	225	100	41	125	118	3	90	110	200	142	82	237	150	90	60	85	M10
		1/2			310	225														142	82	237					
		1			330	245														148	88	243					

型號 Model	減速比 Ratio	馬力 HP	馬達盤及入力孔 Motor Flange & Input Bore									出力法蘭及出力孔 Output Flange & Output Shaft										重量 Weight (kg)
			P	Q	R	K	V	T	U	N	NA	O	M	L	LS	S	D	WxYxLK	JA	JB	Jx 牙深 Deep	
40	100~3600	1/8(90W) 63B	104	83	□ 90	M6	12.7	4	11	80	6	100	120	M8	40	20	22.5	6x6x35	77	60	4-M6-9	4.07
			115	95	140	M8																
50	100~3600	1/8(90W) 63B	104	83	□ 90	M6	12.7	4	11	95	6	120	140	M10	50	25	28	8x7x45	95	70	4-M6-9	5.79
			115	95	140	M8																
60	100~3600	(1/4)	130	110	160	M8	12.7	4	11	130	7	160	180	M10	50	25	28	8x7x45	120	80	4-M8-12	9.7
		1/2					16.3	5	14													
70	100~3600	(1/4)	130	110	160	M8	12.7	4	11	150	7	185	210	M12	60	30	33	8x7x55	140	90	4-M10-15	15.54
		1/2					16.3	5	14													
		1					21.8	6	19													

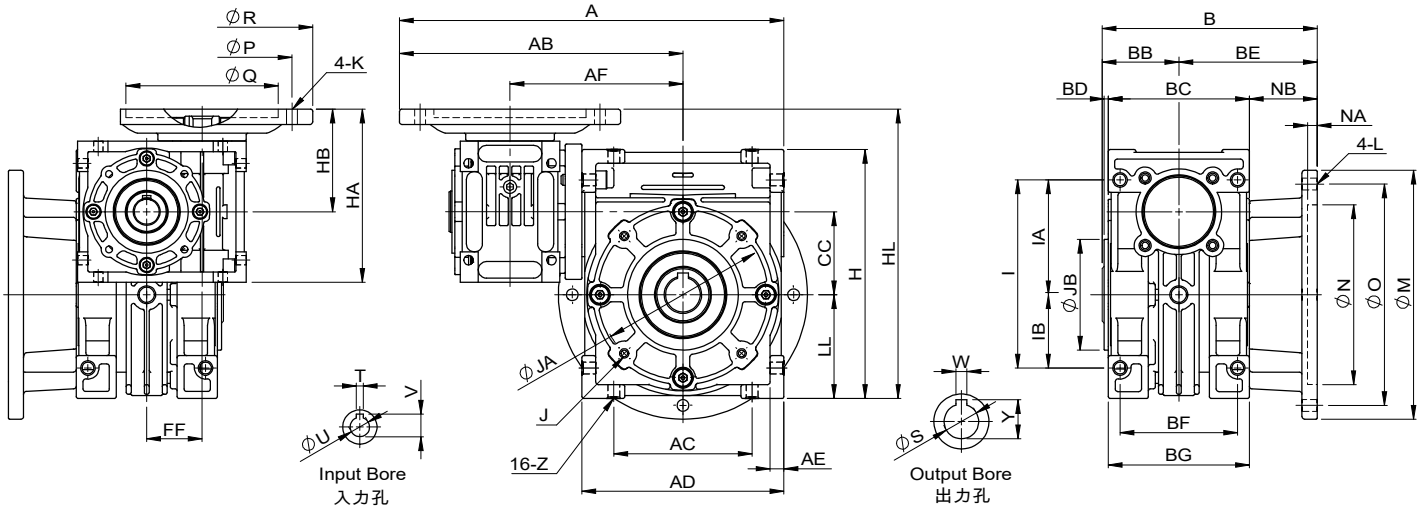
雙段減速機以定轉速設計，最大扭力請參考「減速機參數」(第15頁)，()為較安全選配馬力。

This 2-stage worm reducer is designed to rotate at fixed speed. We recommend to choose the HP inside () for safer choice. Please refer to

ALUMINUM ALLOY WORM REDUCER SERIES

鋁合金蝸輪減速機系列

MODEL : NEOFHM



出力段減速機中心距離 (mm) Central distance of output of reducer.	40	50	60	70
入力段減速機中心距離 (mm) Central distance of input of reducer.	30	30	40	50

unit: mm

型號 Model	減速比 Ratio	馬力 HP	CC	FF	A	AB	AC	AD	AE	AF	B	BE	NB	BB	BC	BD	BF	BG	H	HA	HB	HL	I	IA	IB	LL													
40	100~3600	1/8(90W)	40	30	189	138	70	102	7.5	93	114	70	30	44	80	2	60	72	122	98	58	148	90	55	35	50													
		63B			214	163														100	60	150																	
50	100~3600	1/8(90W)	50	30	207	147	80	120	8.5	102	130	80	33	49	94	3	70	85	145	98	58	168	105	65	40	60													
		63B			232	172														100	60	170																	
60	100~3600	(1/4)	60	40	278	205	100	146	10	125	154	100	49	54	102	3	85	102	180	125	74	209	136	83	53	75													
		1/2			310	225														120	170	12					145	164	100	41	64	118	3	90	110	200	142	82	237
70	100~3600	(1/4)	70	50	310	225	120	170	12	145	164	100	41	64	118	3	90	110	200	142	82	237	150	90	60	85													
		1/2			310	225														120	170	12					145	164	100	41	64	118	3	90	110	200	142	82	237
		1			330	245														120	170	12					145	164	100	41	64	118	3	90	110	200	148	88	243

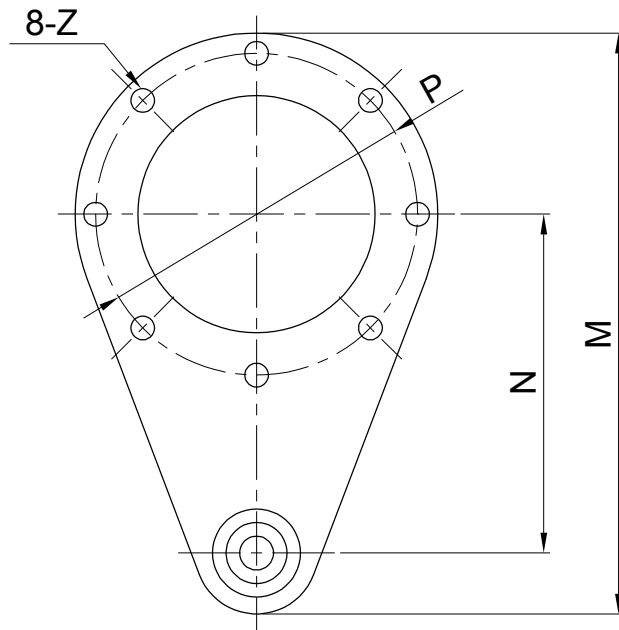
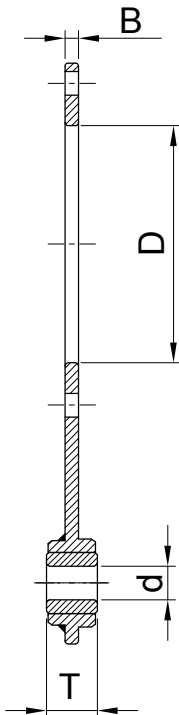
型號 Model	減速比 Ratio	馬力 HP	Z	馬達盤及入力孔 Motor Flange & Input Bore								出力孔 Output Bore								重量 Weight (kg)		
				P	Q	R	K	V	T	U	N	NA	O	M	L	W	S	Y	JA		JB	J×牙深 Deep
40	100~3600	1/8(90W)	M8	104	83	□ 90	M6	12.7	4	11	80	6	100	120	M8	6	20	22.8	77	60	4-M6-9	3.81
		63B		115	95	□ 90	M8	12.7	4	11	95	6	120	140	M10	8	25	28.3	95	70	4-M6-9	
50	100~3600	1/8(90W)	M10	104	83	□ 90	M6	12.7	4	11	95	6	120	140	M10	8	25	28.3	95	70	4-M6-9	5.25
		63B		115	95	□ 90	M8	12.7	4	11	95	6	120	140	M10	8	25	28.3	95	70	4-M6-9	
60	100~3600	(1/4)	M10	130	110	160	M8	12.7	4	11	130	7	160	180	M10	8	25	28.3	120	80	4-M8-12	9.15
		1/2		130	110	160	M8	12.7	4	11	130	7	160	180	M10	8	25	28.3	120	80	4-M8-12	
70	100~3600	(1/4)	M10	130	110	160	M8	12.7	4	11	130	7	160	180	M10	8	25	28.3	120	80	4-M10-15	14.68
		1/2		130	110	160	M8	16.3	5	14	150	7	185	210	M12	8	30	33.3	140	90	4-M10-15	
		1		165	130	200	M10	21.8	6	19	150	7	185	210	M12	8	30	33.3	140	90	4-M10-15	

雙段減速機以定轉速設計，最大扭力請參考「減速機參數」(第15頁)，() 為較安全選配馬力。

This 2-stage worm reducer is designed to rotate at fixed speed. We recommend to choose the HP inside () for safer choice. Please refer to

■ 選配件 Optional Accessories (適用 NE 系列)

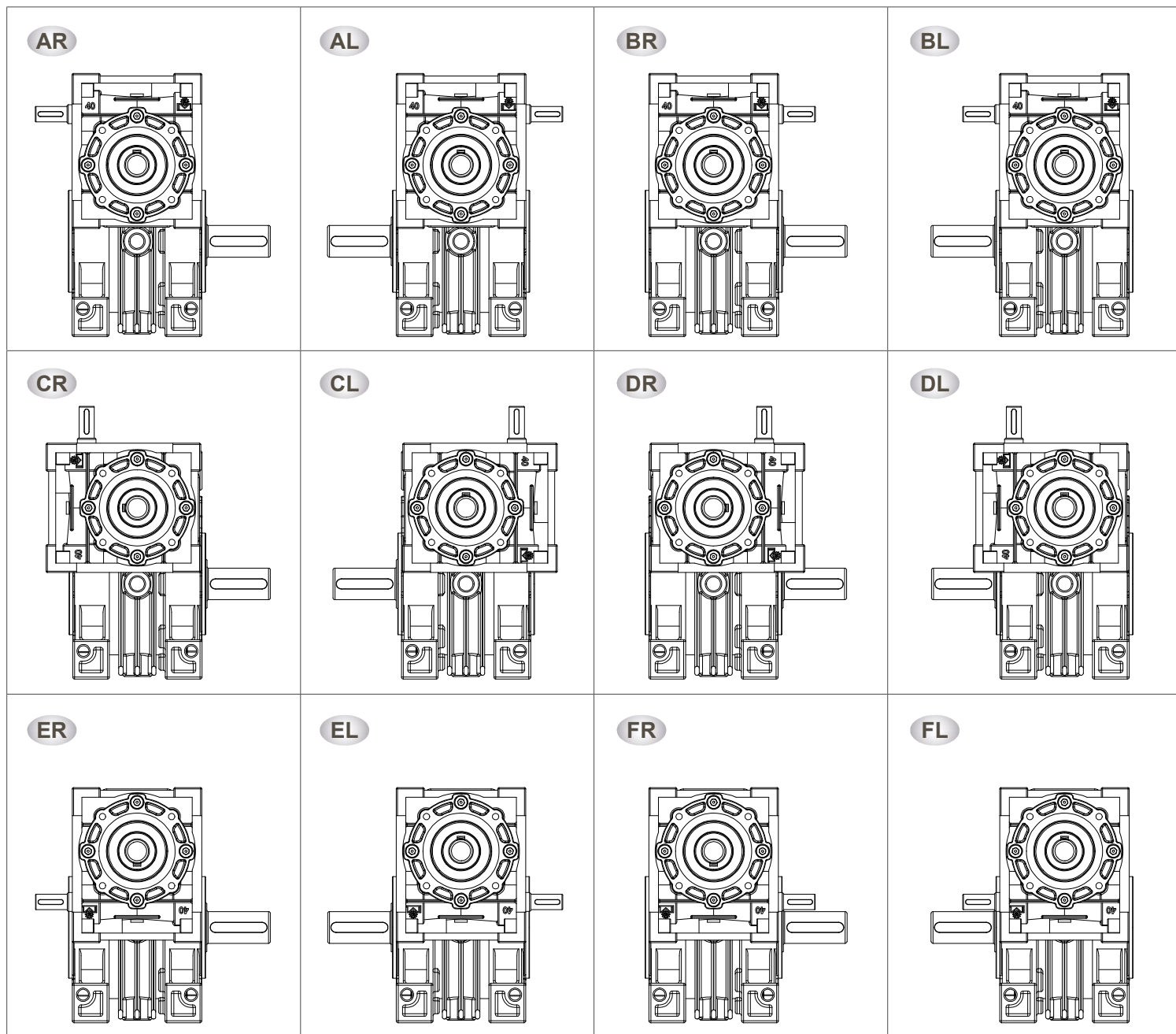
扭力臂 Torque Arm



unit: mm

型號 Model	B	D	d	T	P	Z	N	M
30	3.5	55	8	12.5	65	7	85	140
40	4	60	10	14	77	7	100	162.5
50	4	70	10	14	95	7	100	171.5
60	4	80	10	14	120	9	150	237
70	6	90	12	16	140	11	180	285

■ 安裝方向 Installation Direction (NE 雙段式 2-Stage Series)



Aluminum Alloy Worm Reducer



Indication of Model Numbers

機種型號表示

CEM	63	7.5	1/2	R
減速機型 Type	型號 Model	減速比 Ratio	馬力 Horse Power	軸向 Shaft Direction
CEM	63	7.5~60	1/2HP	R
CEOM	75		1HP	L
CEOFM	90		2HP 3HP	

減速機參數 Reducers Parameter

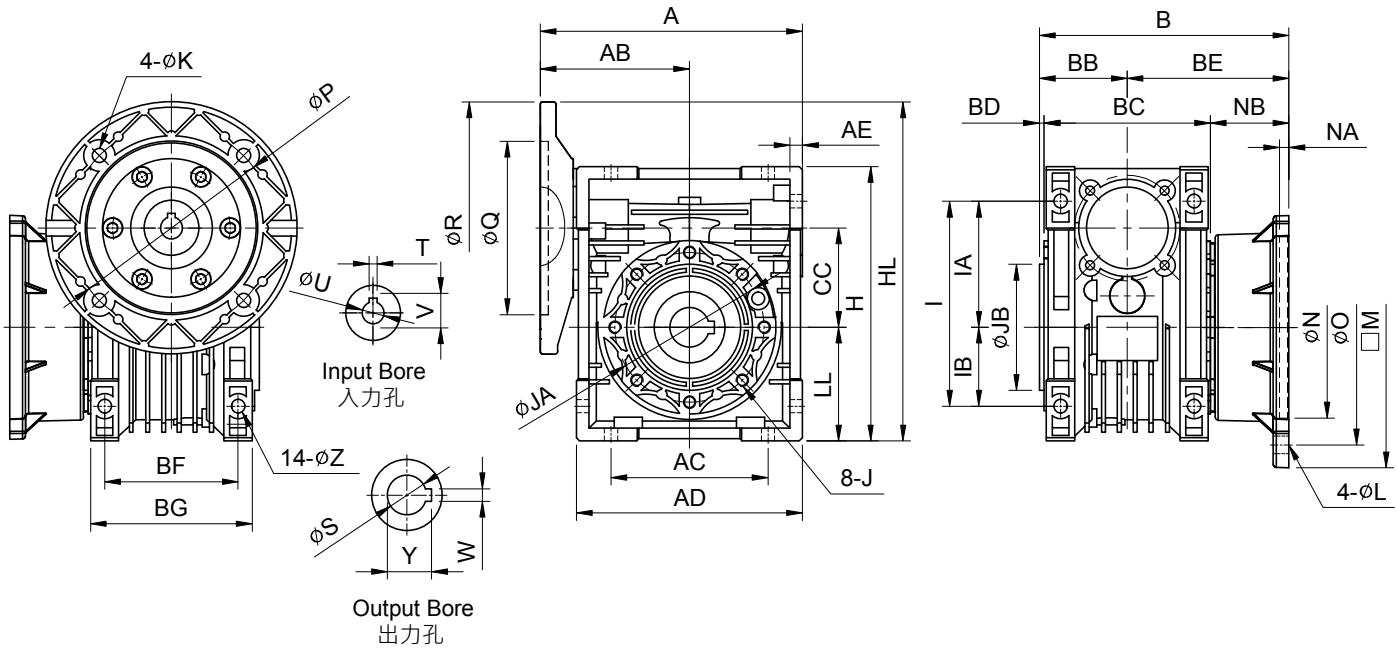
馬達 Motor : 4P/60Hz 輸入轉速 Input R.P.M. = 1700 RPM

(安全係數 1.0 以下為輕負荷。 The reducer is used for light loading when SF below 1.0.)

OR= 輸出轉速 Output R.P.M. (RPM) . IH= 輸入馬力 Input HP (kW) . OT= 輸出扭力 Output Torque (Kg-m) . SF= 安全係數 Safety Factor

型號 Mode	減速比 Ratio	7.5		10		15		20		25		30		40		50		60	
	OR	227		170		113		85		68		56		42		34		28	
	IH	OT	SF	OT	SF	OT	SF	OT	SF	OT	SF	OT	SF	OT	SF	OT	SF	OT	SF
63	0.37	1.58	5.9	1.94	5.2	2.81	4	3.56	3.7	4.2	3.2	4.87	3.7	6.87	2.9	7.58	2.5	8.8	1.9
	0.75	3	2.9	3.7	2.6	5.45	2	6.9	1.8	8.2	1.6	9.5	1.8	13.5	1.5	14.9	1.2	17.4	0.9
	1.5	5.73	1.5	7.3	1.3	10.8	1	13.5	0.9	16.3	0.8	18.7	0.9	-	-	-	-	-	-
75	0.75	3.36	6.8	3.98	4.6	5.56	3.6	7.09	3	8.39	2.6	9.78	3	11.2	1.6	15.3	2	17.8	1.8
	1.5	5.9	3.4	7.8	2.3	10.9	1.8	14	1.5	16.6	1.3	19.4	1.5	25	1.2	13.93	1	14.58	1
	2.2	10.1	1.7	13.3	1.1	19.1	0.9	-	-	-	-	-	-	-	-	-	-	-	-
90	1.5	5.9	3.6	7.8	3.4	10.9	3	14	2.1	16.6	1.6	19.4	1.7	25.1	1.2	27.15	1.3	24.4	1

MODEL : CEOFM



unit: mm

型號 Model	減速比 Ratio	馬力 HP	A	AB	AC	AD	AE	B	BE	NB	BB	BC	BD	BF	BG	CC	LL	H	HL	I	IA	IB	Z	
63	7.5~60	1/2	167	95															215	130	80	50	8.5	
		1	167	95	100	144	8	159	103	50	56	106	3	85	103	63	72	174	235					
		2	167	95																235				
75	7.5~60	1	199	113															261	153	93	60	11.5	
		2	199	113	120	172	10	171	111	54	60	114	3	90	112	75	86	205	261					
		3	200	114															286					
90	7.5~60	2	233	130															293	172	102	70	13	
		3	234	131	140	206	11	181	111	44	70	134	3	100	130	90	103	238	318					

型號 Model	減速比 Ratio	馬力 HP	馬達盤及入力孔 Motor Flange & Input Bore							出力法蘭及出力孔 Output Flange & Output Shaft										重量 Weight (kg)					
			P	Q	R	K	V	T	U	N	NA	O	M	L	W	S	Y	JA	JB		Jx牙深 Deep				
63	7.5~60	1/2	130	110	160	9	16.3	5	14																
		1	165	130	200	11	21.8	6	19	115	6	150	□ 142	11	8	25	28.3	95	80	M8-12			6.6		
		2	165	130	200	11	27.3	8	24																
75	7.5~60	1	165	130	200	11	21.8	6	19																
		2	165	130	200	11	27.3	8	24	130	6	165	□ 169	14	8	28	31.3	115	95	M8-12			9.4		
		3	215	180	250	13	31.3	8	28																
90	7.5~60	2	165	130	200	11	27.3	8	24																
		3	215	180	250	13	31.3	8	28	152	6	175	□ 200	14	10	35	38.3	130	110	M10-15			14.6		

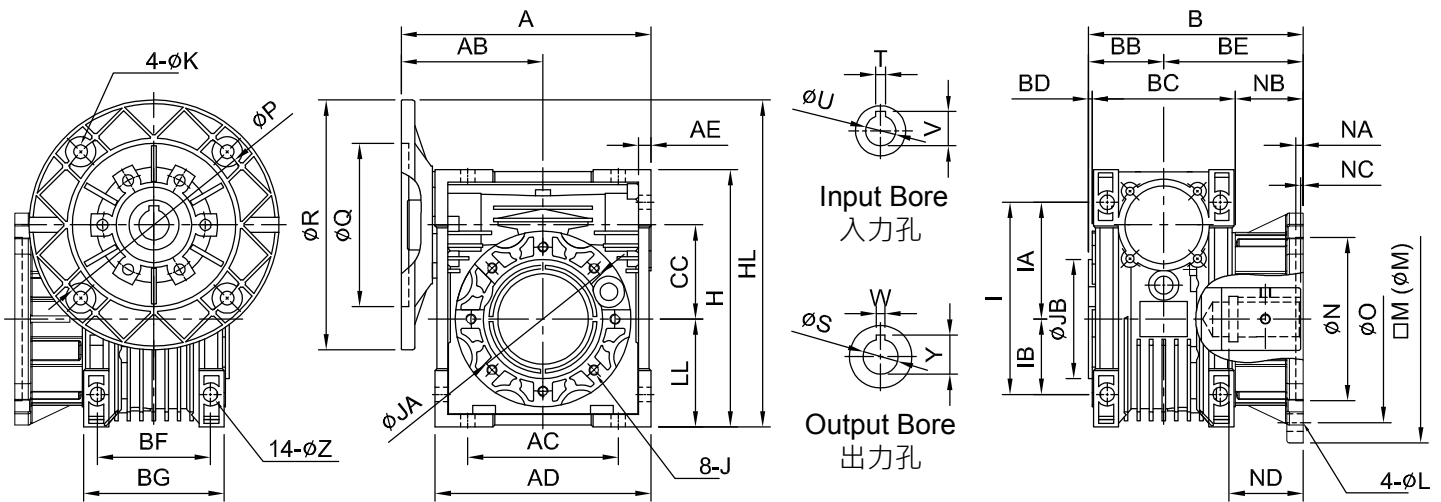
MODEL : CAMW



▲ 75#



▲ 75A#



unit: mm

型號 Model	減速比 Ratio	馬力 HP	A	AB	AC	AD	AE	B	BE	NB	NC	BB	BC	BD	BF	BG	CC	LL	H	HL	I	IA	IB	Z
75 75A	7.5~60	1	199	113	120	172	10	171 185	111 125	54 68	2	60	114	3	90	112	75	86	205	261	153	93	60	11.5
75 75A	7.5~60	2	199	113	120	172	10	171 185	111 125	54 68	2	60	114	3	90	112	75	86	205	261	153	93	60	11.5
75 75A	7.5~15	3	200	114	120	172	10	171 185	111 125	54 68	2	60	114	3	90	112	75	86	205	286	153	93	60	11.5

型號 Model	減速比 Ratio	馬力 HP	馬達盤及入力孔 Motor Flange & Input Bore							出力法蘭及出力孔 Output Flange & Output Shaft										重量 Weight (kg)		
			P	Q	R	K	V	T	U	N	NA	ND	O	M	L	W	S	Y	JA		JB	J×牙深 Deep
75 75A	7.5~60	1	165	130	200	11	21.8	6	19	130	6	59	165	\square 169	14	7	25	28.3	115	95	M8-12	9.8
													160	185	11	7	28	31.3				
																8	30	33.3				
75 75A	7.5~60	2	165	130	200	11	27.3	8	24	130	6	59	165	\square 169	14	7	25	28.3	115	95	M8-12	9.8
													160	185	11	7	28	31.3				
																8	30	33.3				
75 75A	7.5~15	3	215	180	250	13	31.3	8	28	130	6	59	165	\square 169	14	7	25	28.3	115	95	M8-12	10
													160	185	11	7	28	31.3				
																8	30	33.3				

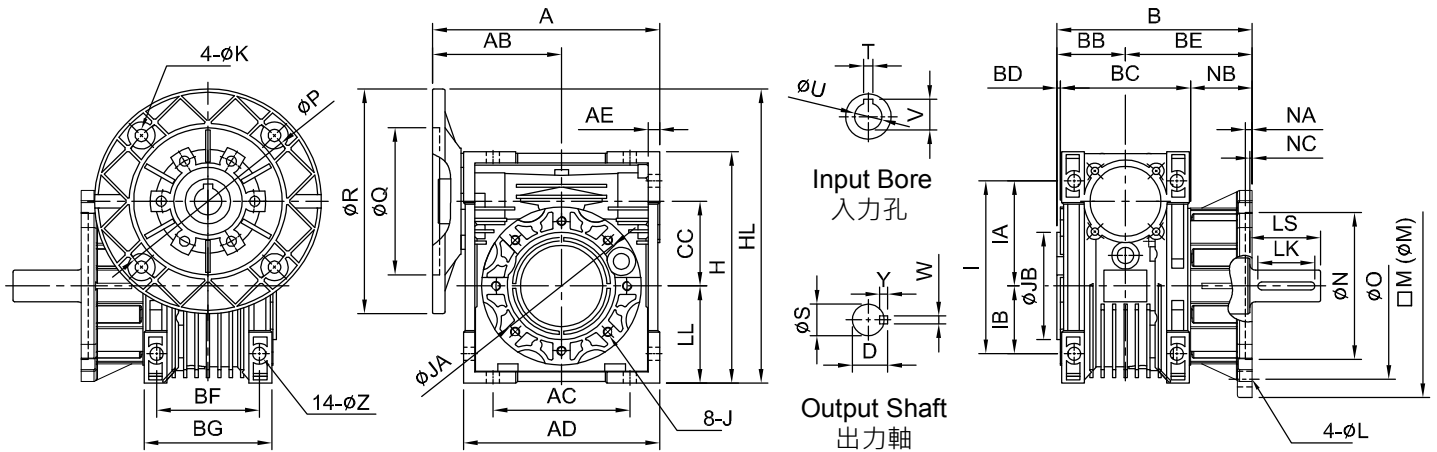
MODEL : CADW



▲ 75#



▲ 75A#



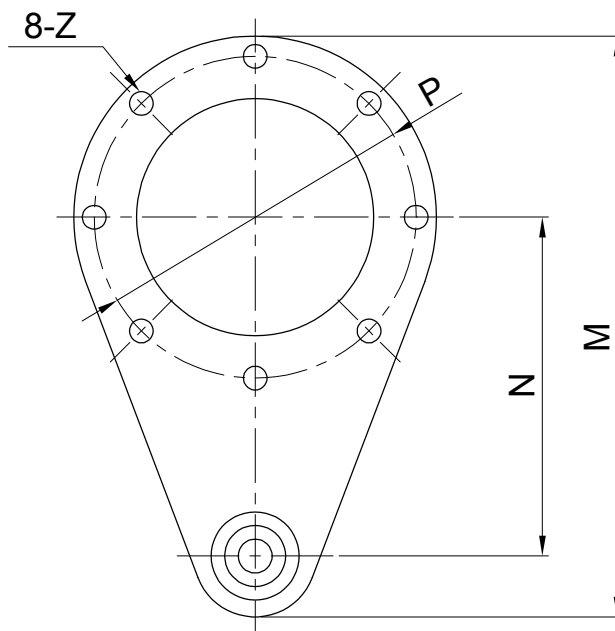
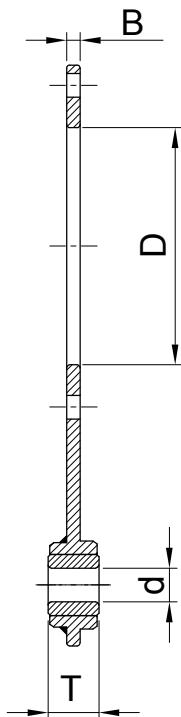
unit: mm

型號 Model	減速比 Ratio	馬力 HP	A	AB	AC	AD	AE	B	BE	NB	NC	BB	BC	BD	BF	BG	CC	LL	H	HL	I	IA	IB	Z
75 75A	7.5~60	1	199	113	120	172	10	171 185	111 125	54 68	2	60	114	3	90	112	75	86	205	261	153	93	60	11.5
75 75A	7.5~60	2	199	113	120	172	10	171 185	111 125	54 68	2	60	114	3	90	112	75	86	205	261	153	93	60	11.5
75 75A	7.5~15	3	200	114	120	172	10	171 185	111 125	54 68	2	60	114	3	90	112	75	86	205	286	153	93	60	11.5

型號 Model	減速比 Ratio	馬力 HP	馬達盤及入力孔 Motor Flange & Input Bore										出力法蘭及出力軸 Output Flange & Output Shaft										重量 Weight (kg)
			P	Q	R	K	V	T	U	N	NA	O	M	L	LS	S	D	WxYxLK	JA	JB	Jx 牙深 Deep		
75 75A	7.5~60	1	165	130	200	11	21.8	6	19	130	6	165 160	□169 185	14 11	62	25	28	7x7x50	115	95	M8-12	9.8	
75 75A	7.5~60	2	165	130	200	11	27.3	8	24	130	6	165 160	□169 185	14 11	62	28	31	7x7x50	115	95	M8-12	9.8	
75 75A	7.5~15	3	215	180	250	13	31.3	8	28	130	6	165 160	□169 185	14 11	62	28	31	7x7x50	115	95	M8-12	10	

■ 選配品 Optional Accessories (適用 CE & CA 系列)

扭力臂 Torque Arm



unit: mm

型號 Model	B	D	d	T	P	Z	N	M
63	6	80	10	14	95	9	150	223
75	6	95	20	25	115	9	200	299
90	6	110	20	25	130	11	200	310

潤滑油選定 Selection of Lubricant Oil

適當潤滑油的黏度，能使蝸輪與蝸桿磨擦容易，遇高負荷及衝擊負荷時，減速機才能充分發揮其機能。右表即"利明牌"減速機潤滑油的選定：

Proper viscosity of lubricant is contributive to ease the friction of worm gears, so the speed reducer can fully apply its function in the case of high load or impact load. The table right shows the selection of lubricants for LIMING gear reducers:

注意事項 Notices

- ◆ 本公司出廠減速機使用合成齒輪油。(不能使用礦物油，或礦物油與合成齒輪油混合使用)
- ◆ 最初使用 300 小時後，洗淨內部、換上新油以後每 2000 小時換油。
- ◆ 在高速、高溫、低速、重荷重、強制潤滑等特殊情況下使用場合，請與本公司洽商。
- ◆ 潤滑油不足可能導致蝸輪快速磨損和效率降低。
- ◆ 潤滑油過多可能導致漏油。
- ◆ 請加入適當潤滑。
- ◆ LI MING gear reducers use synthetic gear oil. (Do not use mineral oil, or mix mineral oil with synthetic gear oil.)
- ◆ After Initial 300 hours of usage, the interior of the reducing gear should be cleaned up and refill new oil. And then, after every 2000 hours of usage replace new oil again.
- ◆ Please contact with our company if the gear reducer will be used in special conditions, such as high speed, high temperature, low speed, heavy load, and forced lubrication and so on.
- ◆ Insufficient lubricant oil may lead to the rapid wears of worm gear and low efficiency.
- ◆ Excessive lubricant could result in leakage.
- ◆ Please fill in adequate lubricant oil.

油量表 Oil Capacities (unit: cc)

Model	Type	NE	Model	Type	CE / CA
30#		30	63#		300
40#		70	75#		420
50#		140	90#		1000
60#		260			
70#		360			

零件對照表 Table of Parts

型號 Model		零件 Parts	出力軸蓋 output shaft cover	入力軸蓋 input shaft cover	馬達盤 Motor Flange			
NE	CE/CA				40W、60W、90W	1/4HP、1/2HP	1HP	2HP、3HP
30#	-	Bearing	6005 x 2	6202ZZ x 2	6202ZZ x 1 6003ZZ x 1	-	-	-
		Oil Seal	TC25x47x7	SC15x35x7	SC17x30x7	-	-	-
40#	-	Bearing	6006 x 2	6202ZZ x 2	-	6302ZZ x 1 6905ZZ x 1	-	-
		Oil Seal	TC30x47x7	SC15x42x7	-	SC25x35x7	-	-
50#	-	Bearing	6008 x 2	6303ZZ x 2	-	6303ZZ x 1 6005ZZ x 1	6906ZZ x 1 6303ZZ x 1	-
		Oil Seal	TC40x55x7	SC17x47x7	-	SC25x40x7	SC30x40x8	-
60#	-	Bearing	6208 x 2	6304ZZ x 2	-	6304ZZ x 1 6205ZZ x 1	6304ZZ x 1 320/28 x 1	6304ZZ x 2
		Oil Seal	TC40x62x10	SC20x52x8	-	SC25x46x7	SC28x46x7	SC35x46x7
70#	-	Bearing	6210 x 2	6305ZZ x 2	-	6206ZZ x 1 6305ZZ x 1	6305ZZ x 1 6007ZZ x 1	6007ZZ x 1 6305ZZ x 1
		Oil Seal	TC50x70x10	SC25x62x8	-	SC30x55x7	SC35x55x8	SC35x55x8
-	63#	Bearing	6009 x 2	-	-	-	6007ZZ x 1 6205ZZ x 1	6007ZZ x 1 6205ZZ x 1
		Oil Seal	TC45x65x10	-	-	SC35x52x7	SC35x52x7	-
-	75#	Bearing	6010 x 2	-	-	-	6008ZZ x 1 6206ZZ x 1	6008ZZ x 1 6206ZZ x 1
		Oil Seal	TC50x72x10	-	-	-	TC40x60x10	TC40x60x10
-	90#	Bearing	6012 x 2	-	-	-	-	6008ZZ x 1 6206ZZ x 1
		Oil Seal	TC60x85x10	-	-	-	-	TC40x60x10

1. Oil Seal = 油封規格 Oil Seal
2. Bearing = 軸承規格 Ball Bearing
3. 以上數值僅供參考，如有變動恕不另行通知。