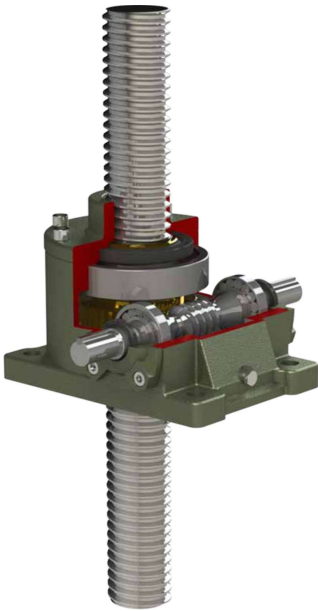


# VJ

## Features of VJ Series

### VJ 系列產品特性



螺旋升降器結構主要為由機身、含內螺紋之銅件、螺桿及其它附件組成。在設計規範上從 35# ~ 80#，有多種規格。螺桿端在應用上又可分為全牙式、平頭式、螺牙式、栓孔式、頂板式。螺旋升降器具有體積小、功能多、重量輕、無噪音、結構緊湊、安裝方便、靈活、動力源廣、傳動效率高、使用壽命長等特點。可以頂升、降落、提升、下壓、推進、翻轉等多種安裝使用方式。螺旋升降器可單台或多台組合使用。能按一定的程式準確地控制調整頂升或降落的高度，可以用電機或其他動力直接帶動，也可以手動方式帶動。

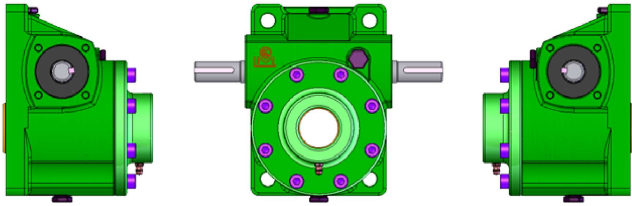
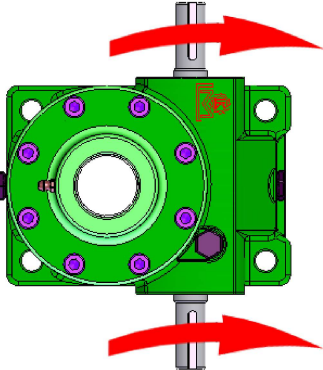
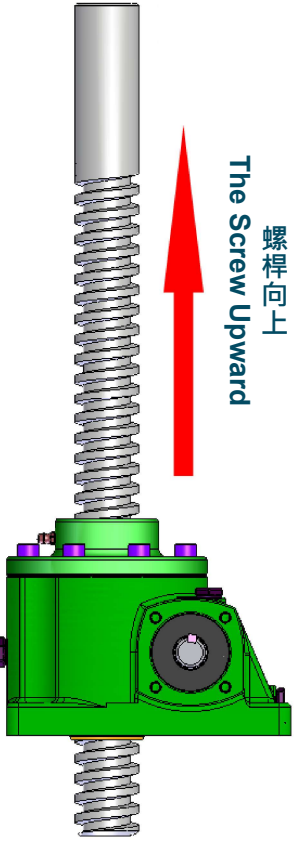
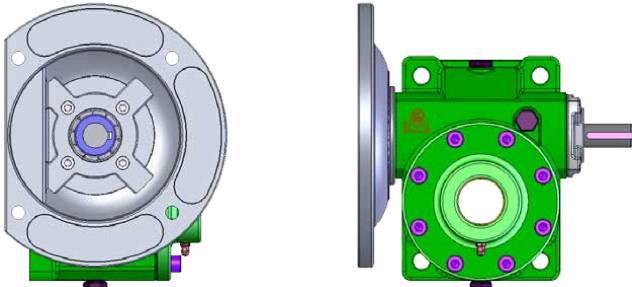
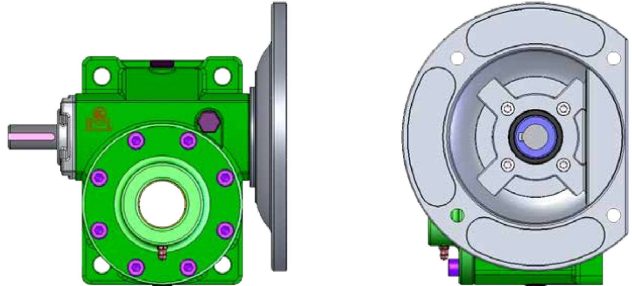
The screw jack is composed of a main body, copper articles with interior thread, screw and other accessories. It comes in various specifications from model 35 to 80. In actual application, the screw ends can be divided into various types such as : no end, rod end, threaded end, clevis end, and top plate. The screw jack has a variety of features, such as compact size, multiple functions, light weight, no noise, intensified structure, convenient installation, high maneuverability, wide variety of power sources, high transmission efficiency, and long service life. It is capable of various installation, such as moving upward, moving downward, pushing forward, overturning, etc. The screw jacks can be used independently or in combination of several sets. It can accurately control lifting or lowering height according to programmed setting. It can be driven directly by electrical or other power sources, or by manually.

## Indication of Model Numbers

### 機種型號表示

| VJ           | 50          | - | 10           | - | 1                    | R               |
|--------------|-------------|---|--------------|---|----------------------|-----------------|
| 減速機型<br>Type | 型號<br>Model |   | 減速比<br>Ratio |   | 馬力<br>Horse<br>Power | 軸向<br>Direction |
| VJ           | 35          |   |              |   | 1/4HP                |                 |
| VJM          | 40          |   |              |   | 1/2HP                |                 |
|              | 50          |   |              |   | 1HP                  |                 |
|              | 60          |   |              |   | 2HP                  |                 |
|              | 70          |   |              |   | 3HP                  |                 |
|              | 80          |   |              |   |                      |                 |

## ■ 入力傳動型式 Variety of Input Transmission

| 雙入力 (VJ 標準型)<br>Double Input Shaft (VJ Standard Type)                                                            | 入力轉向與螺桿上下運動關係<br>Rotation Direction & Movement                                                                         |
|------------------------------------------------------------------------------------------------------------------|------------------------------------------------------------------------------------------------------------------------|
|                                 |  <p>旋轉方向<br/>Rotation Direction</p> |
| 直結雙入 (VJM 標準型)<br>With Motor Flange (VJM Standard Type)                                                          |  <p>The Screw Upward<br/>螺桿向上</p>  |
| <p>軸向 Shaft Direction: R</p>  |                                                                                                                        |
| <p>軸向 Shaft Direction: L</p>  |                                                                                                                        |

## ■ 潤滑油使用 Lubricant

適當的潤滑油使用，可以發揮升降器的效率，並提高其運轉的壽命。本產品出廠採用 ISO VG 150 極壓機油。  
 To use appropriate lubricant will enhance the efficiency of the jack, and increase its service life. LI MING screw jacks use ISO VG 150 lubricant oil.

## 容許彎曲負荷值 Permissible Bending Load

關於各種型號及軸端各種負荷方式，有關牙桿長度及容許彎曲負荷可參考以下表格或計算式。

Concerning the variety of models and loading methods at screw end, as well as screw length and permissible bending load, please refer to the following charts or formula.

計算方法：Formula

$$Per = n \cdot \pi^2 \cdot E \cdot (k/\ell)^2 \cdot A \cdot \alpha$$

n: 軸端支撐因數

Shaft End Support Factor

E: 縱向彈性模速

Longitudinal Elasticity Modulus

$$2.1 \times 10 \text{ kgf/mm}^2$$

K: 最小輔助半徑

Minimum Auxiliary Modulus

$$K = \frac{d_1}{4}$$

d<sub>1</sub>: 最小輔助半徑

Minor Diam

ℓ: 軸支撐長度

Shaft Support Length

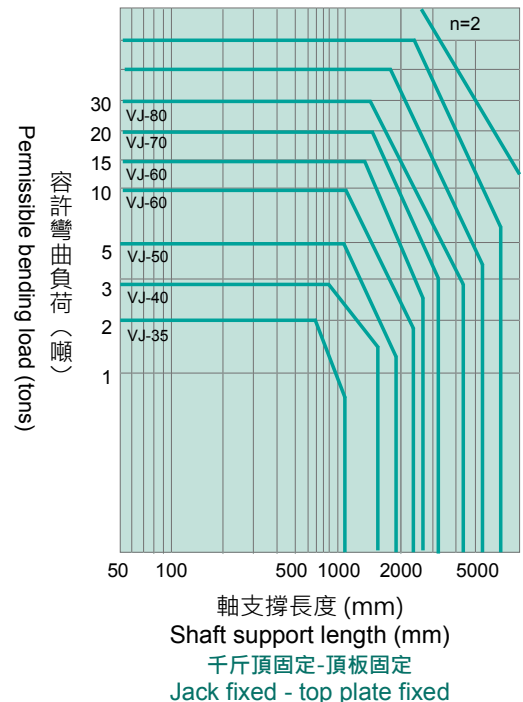
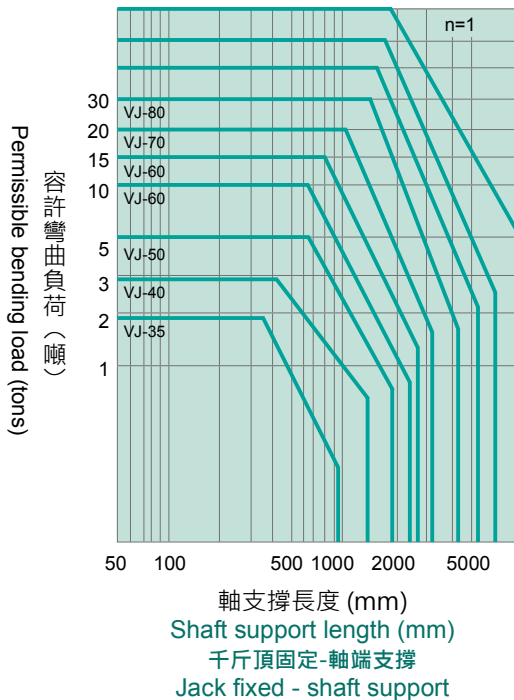
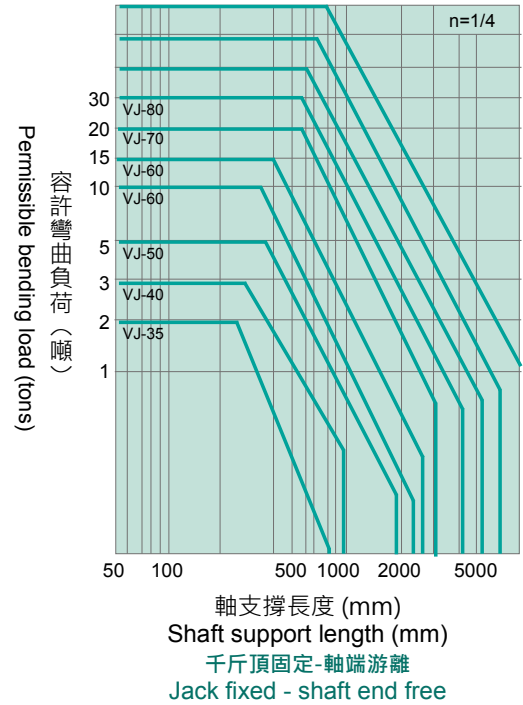
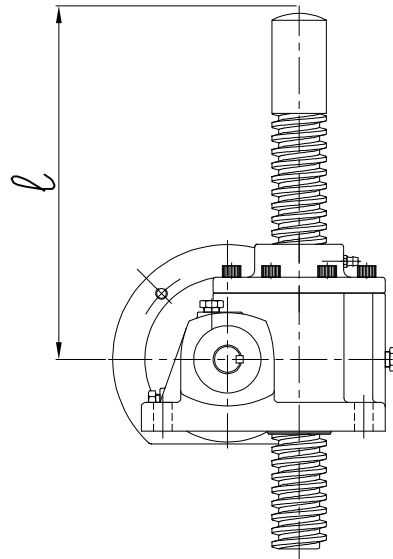
$$A = \frac{\pi \cdot (d_1)^2}{4}$$

A: 舉升螺桿之螺紋底直徑的斷面積  
Thread of lift screw section area of minor diam.

α: 安全係數

$$\alpha = 0.25$$

Safety Factor



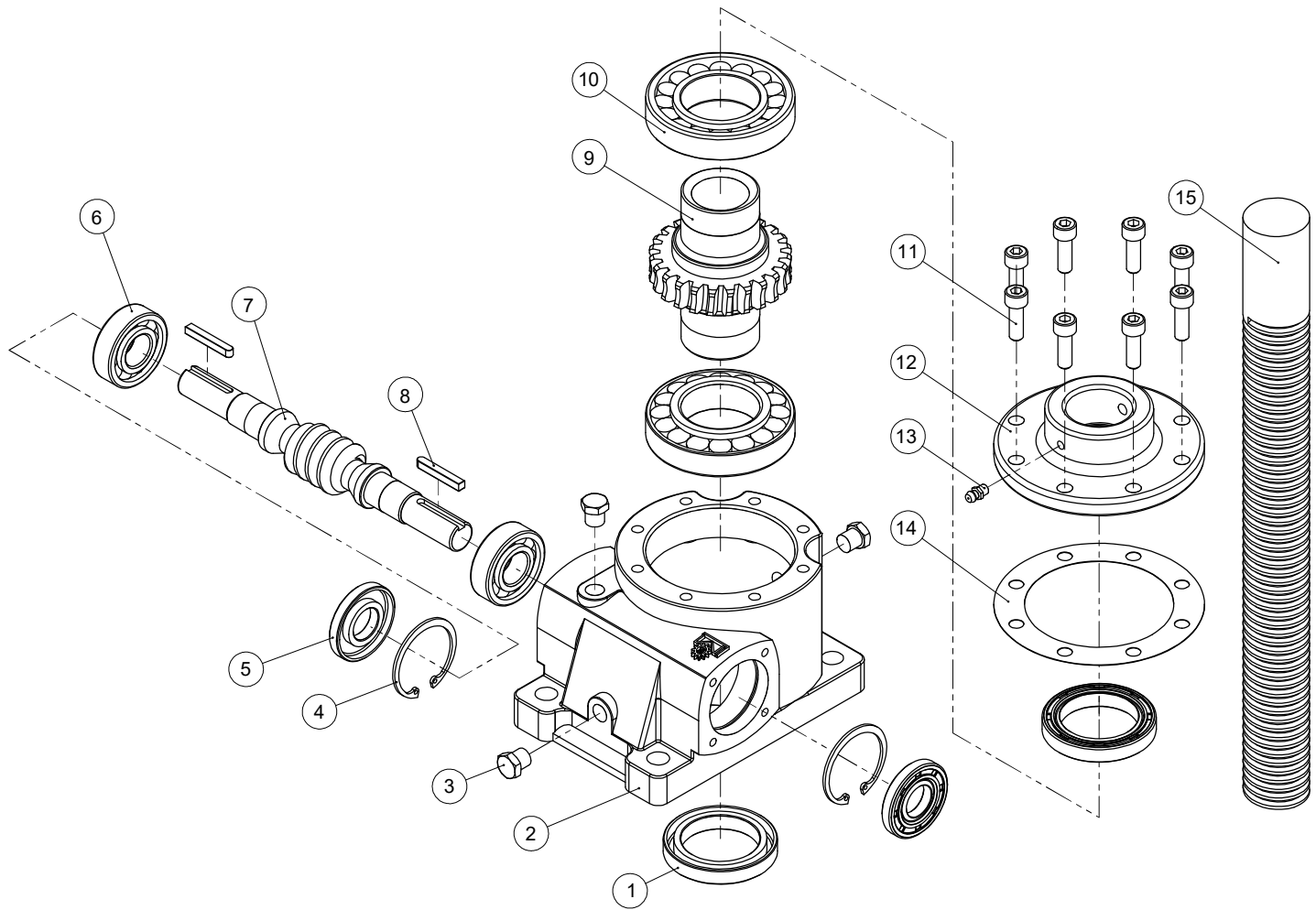
## 減速機參數 Reducers Parameter

| 型號<br>Model | 螺桿<br>Screw<br>Ø | 螺距<br>Pitch<br>mm | 減速比<br>Ratio | 1800 RPM<br>入力轉速 Input Speed   |                                |                    |                       | 1500 RPM<br>入力轉速 Input Speed   |                                |                    |                       | 1200 RPM<br>入力轉速 Input Speed   |                                |                    |                       |
|-------------|------------------|-------------------|--------------|--------------------------------|--------------------------------|--------------------|-----------------------|--------------------------------|--------------------------------|--------------------|-----------------------|--------------------------------|--------------------------------|--------------------|-----------------------|
|             |                  |                   |              | 最大<br>輸入馬力<br>MAX. Input<br>HP | 輸出轉速<br>Output Speed<br>R.P.M. | 荷重<br>Load<br>(kg) | 每分鐘升<br>(降)<br>mm/min | 最大<br>輸入馬力<br>MAX. Input<br>HP | 輸出轉速<br>Output Speed<br>R.P.M. | 荷重<br>Load<br>(kg) | 每分鐘升<br>(降)<br>mm/min | 最大<br>輸入馬力<br>MAX. Input<br>HP | 輸出轉速<br>Output Speed<br>R.P.M. | 荷重<br>LOAD<br>(kg) | 每分鐘升<br>(降)<br>mm/min |
| 35          | 1"               | P=5               | 5            | 0.93                           | 360                            | 500                | 1800                  | 0.86                           | 300                            | 550                | 1500                  | 0.87                           | 240                            | 700                | 1200                  |
|             |                  |                   | 10           | 0.50                           | 180                            | 500                | 900                   | 0.50                           | 150                            | 550                | 750                   | 0.50                           | 120                            | 700                | 600                   |
|             |                  |                   | 20           | 0.50                           | 90                             | 600                | 450                   | 0.50                           | 75                             | 700                | 375                   | 0.50                           | 60                             | 900                | 300                   |
| 40          | 1 1/4"           | P=6               | 6            | 1.31                           | 300                            | 700                | 1800                  | 1.25                           | 250                            | 800                | 1500                  | 1.18                           | 200                            | 950                | 1200                  |
|             |                  |                   | 12           | 0.89                           | 150                            | 950                | 900                   | 0.86                           | 125                            | 1100               | 750                   | 0.81                           | 100                            | 1300               | 600                   |
|             |                  |                   | 24           | 0.50                           | 75                             | 950                | 450                   | 0.50                           | 63                             | 1100               | 375                   | 0.50                           | 50                             | 1300               | 300                   |
| 50          | 1 1/2"           | P=6               | 6            | 1.86                           | 300                            | 900                | 1800                  | 1.72                           | 250                            | 1000               | 1500                  | 1.66                           | 200                            | 1200               | 1200                  |
|             |                  |                   | 12           | 1.47                           | 150                            | 1350               | 900                   | 1.36                           | 125                            | 1500               | 750                   | 1.31                           | 100                            | 1800               | 600                   |
|             |                  |                   | 24           | 1.04                           | 75                             | 1800               | 450                   | 0.96                           | 63                             | 2000               | 375                   | 0.92                           | 50                             | 2400               | 300                   |
| 60          | 2"               | P=8               | 8            | 2.84                           | 225                            | 1300               | 1800                  | 2.64                           | 188                            | 1450               | 1500                  | 2.48                           | 150                            | 1700               | 1200                  |
|             |                  |                   | 16           | 1.50                           | 113                            | 1300               | 900                   | 1.40                           | 94                             | 1450               | 750                   | 1.31                           | 75                             | 1700               | 600                   |
|             |                  |                   | 32           | 1.07                           | 56                             | 1750               | 450                   | 1.00                           | 47                             | 1950               | 375                   | 0.92                           | 37                             | 2250               | 300                   |
| 70          | 2 1/2"           | P=10              | 10           | 3.57                           | 180                            | 1400               | 1800                  | 3.24                           | 150                            | 1850               | 1500                  | 3.01                           | 120                            | 1950               | 1200                  |
|             |                  |                   | 20           | 1.90                           | 90                             | 1600               | 900                   | 1.97                           | 75                             | 1850               | 750                   | 1.84                           | 60                             | 2250               | 600                   |
|             |                  |                   | 40           | 1.53                           | 45                             | 2400               | 450                   | 1.57                           | 38                             | 2800               | 375                   | 1.46                           | 30                             | 3350               | 300                   |
| 80          | 75mm             | P=12              | 12           | 4.86                           | 150                            | 1850               | 1800                  | 4.71                           | 125                            | 2150               | 1500                  | 4.55                           | 100                            | 2600               | 1200                  |
|             |                  |                   | 18           | 3.56                           | 100                            | 1900               | 1200                  | 3.59                           | 83                             | 2300               | 1000                  | 3.44                           | 66                             | 2750               | 800                   |
|             |                  |                   | 36           | 2.22                           | 50                             | 2200               | 600                   | 2.19                           | 42                             | 2600               | 500                   | 2.15                           | 33                             | 3200               | 400                   |

| 型號<br>Model | 螺桿<br>Screw<br>Ø | 螺距<br>Pitch<br>mm | 減速比<br>Ratio | 900 RPM<br>入力轉速 Input Speed    |                                |                    |                       | 600 RPM<br>入力轉速 Input Speed    |                                |                    |                       | 300 RPM<br>入力轉速 Input Speed    |                                |                    |                       |
|-------------|------------------|-------------------|--------------|--------------------------------|--------------------------------|--------------------|-----------------------|--------------------------------|--------------------------------|--------------------|-----------------------|--------------------------------|--------------------------------|--------------------|-----------------------|
|             |                  |                   |              | 最大<br>輸入馬力<br>MAX. Input<br>HP | 輸出轉速<br>Output Speed<br>R.P.M. | 荷重<br>Load<br>(kg) | 每分鐘升<br>(降)<br>mm/min | 最大<br>輸入馬力<br>MAX. Input<br>HP | 輸出轉速<br>Output Speed<br>R.P.M. | 荷重<br>Load<br>(kg) | 每分鐘升<br>(降)<br>mm/min | 最大<br>輸入馬力<br>MAX. Input<br>HP | 輸出轉速<br>Output Speed<br>R.P.M. | 荷重<br>LOAD<br>(kg) | 每分鐘升<br>(降)<br>mm/min |
| 35          | 1"               | P=5               | 5            | 0.84                           | 180                            | 900                | 900                   | 0.62                           | 120                            | 1000               | 600                   | 0.50                           | 60                             | 1000               | 300                   |
|             |                  |                   | 10           | 0.50                           | 90                             | 750                | 450                   | 0.50                           | 60                             | 1000               | 300                   | 0.25                           | 30                             | 1350               | 150                   |
|             |                  |                   | 20           | 0.50                           | 45                             | 1200               | 225                   | 0.25                           | 30                             | 1350               | 150                   | 0.25                           | 15                             | 1350               | 75                    |
| 40          | 1 1/4"           | P=6               | 6            | 1.22                           | 150                            | 1300               | 900                   | 1.12                           | 100                            | 1800               | 600                   | 0.56                           | 20                             | 1800               | 300                   |
|             |                  |                   | 12           | 0.77                           | 75                             | 1650               | 450                   | 0.62                           | 50                             | 2000               | 300                   | 0.50                           | 25                             | 2000               | 150                   |
|             |                  |                   | 24           | 0.50                           | 38                             | 1650               | 225                   | 0.50                           | 25                             | 2000               | 150                   | 0.25                           | 13                             | 2000               | 75                    |
| 50          | 1 1/2"           | P=6               | 6            | 1.55                           | 150                            | 1500               | 900                   | 1.17                           | 100                            | 1700               | 600                   | 0.72                           | 50                             | 2100               | 300                   |
|             |                  |                   | 12           | 1.17                           | 75                             | 2150               | 450                   | 0.78                           | 50                             | 2150               | 300                   | 0.50                           | 25                             | 2500               | 150                   |
|             |                  |                   | 24           | 0.73                           | 38                             | 2550               | 225                   | 0.56                           | 25                             | 2850               | 150                   | 0.50                           | 13                             | 2900               | 75                    |
| 60          | 2"               | P=8               | 8            | 2.30                           | 113                            | 2100               | 900                   | 2.22                           | 75                             | 3050               | 600                   | 1.75                           | 38                             | 4800               | 300                   |
|             |                  |                   | 16           | 1.27                           | 56                             | 2200               | 450                   | 1.17                           | 38                             | 3050               | 300                   | 0.92                           | 19                             | 4800               | 150                   |
|             |                  |                   | 32           | 0.86                           | 28                             | 2800               | 225                   | 0.84                           | 19                             | 4100               | 150                   | 0.65                           | 9                              | 6400               | 75                    |
| 70          | 2 1/2"           | P=10              | 10           | 2.84                           | 90                             | 2450               | 900                   | 2.59                           | 60                             | 3350               | 600                   | 1.89                           | 30                             | 4900               | 300                   |
|             |                  |                   | 20           | 1.72                           | 45                             | 2800               | 450                   | 1.58                           | 30                             | 3850               | 300                   | 1.15                           | 15                             | 5600               | 150                   |
|             |                  |                   | 40           | 1.44                           | 23                             | 4400               | 225                   | 1.25                           | 15                             | 5750               | 150                   | 0.92                           | 8                              | 8400               | 75                    |
| 80          | 75mm             | P=12              | 12           | 4.27                           | 75                             | 3250               | 900                   | 3.94                           | 30                             | 4500               | 600                   | 2.80                           | 25                             | 6400               | 300                   |
|             |                  |                   | 18           | 3.28                           | 50                             | 3500               | 600                   | 2.94                           | 33                             | 4700               | 400                   | 2.09                           | 17                             | 6700               | 200                   |
|             |                  |                   | 36           | 1.97                           | 25                             | 3900               | 300                   | 1.82                           | 17                             | 5400               | 200                   | 1.61                           | 8                              | 9600               | 100                   |

## 分解系統圖 System Drawing

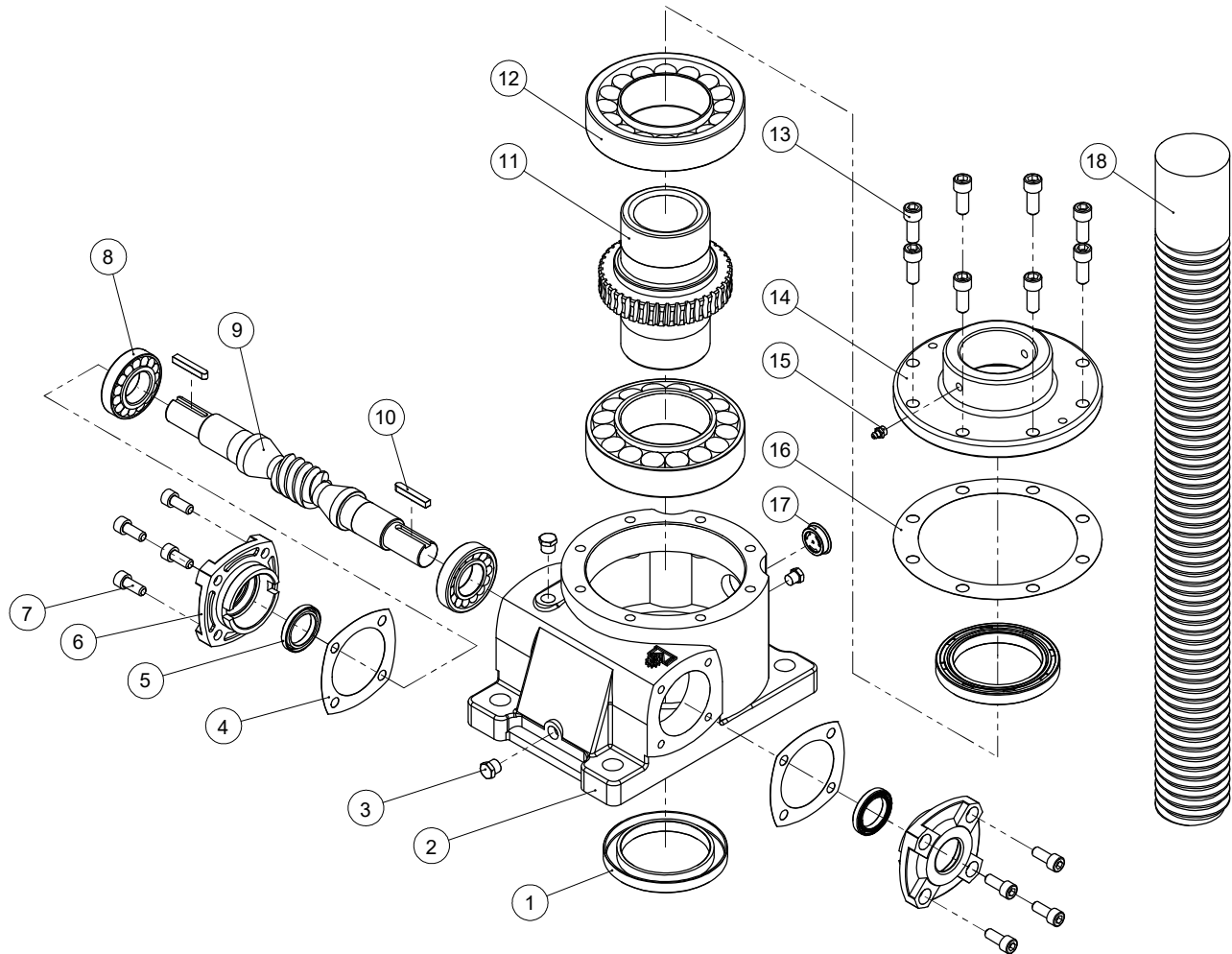
MODEL : VJ(35# ~ 50#)



| NO. | 零件名稱    | Name of Parts        |
|-----|---------|----------------------|
| 1   | 油封      | Oil Seal             |
| 2   | 蝸輪箱     | Outer Shell          |
| 3   | 油栓      | Oil Plug             |
| 4   | 扣環 (R)  | Snap Ring (R)        |
| 5   | 油封      | Oil Seal             |
| 6   | 滾珠軸承    | Ball Bearing         |
| 7   | 蝸桿      | Worm Shaft           |
| 8   | 單圓鍵     | Key                  |
| 9   | 蝸輪      | Worm Wheel           |
| 10  | 滾錐軸承    | Taper Roller Bearing |
| 11  | 六角承窩頭螺絲 | Hex Screw            |
| 12  | 出力軸蓋    | Output Shaft Cover   |
| 13  | 牛油嘴     | Fittings             |
| 14  | 非石棉墊片   | Asbestos Free Gasket |
| 15  | 螺桿      | Screw                |

## 分解系統圖 System Drawing

MODEL : VJ(60# ~ 80#)



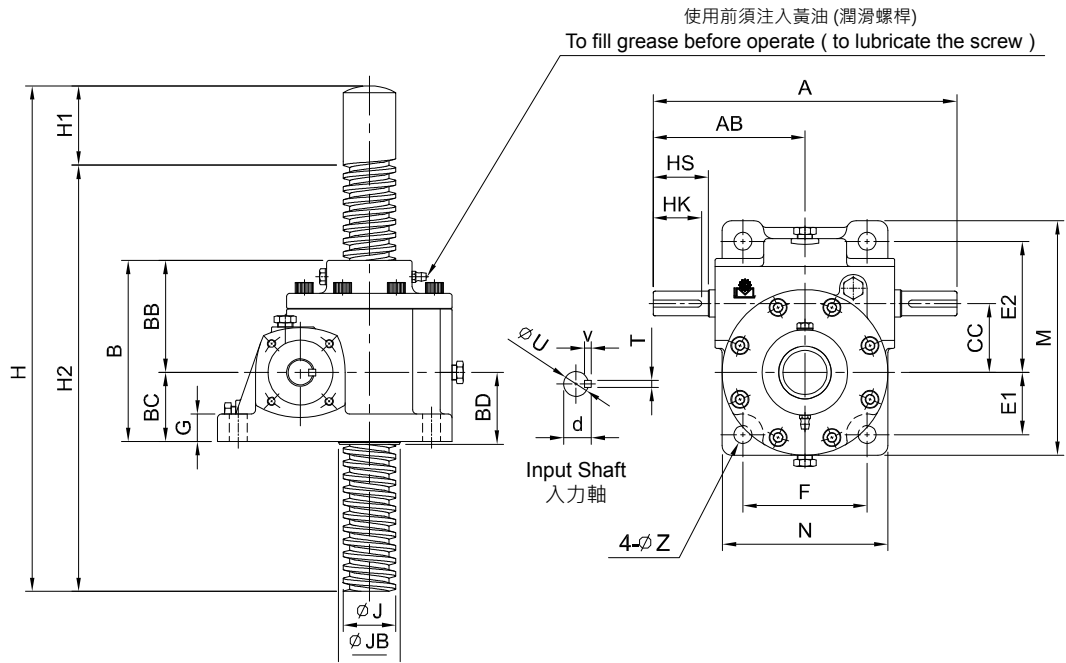
| NO. | 零件名稱                           | Name of Parts                                          |
|-----|--------------------------------|--------------------------------------------------------|
| 1   | 油封                             | Oil Seal                                               |
| 2   | 蝸輪箱                            | Outer Shell                                            |
| 3   | 油柱                             | Oil Plug                                               |
| 4   | 非石棉墊片                          | Asbestos Free Gasket                                   |
| 5   | 油封                             | Oil Seal                                               |
| 6   | 入力軸蓋                           | Input Shaft Cover                                      |
| 7   | 六角承窩頭螺絲                        | Hex Screw                                              |
| 8   | 滾珠軸承 (60# ~ 70#)<br>滾錐軸承 (80#) | Ball Bearing (60# ~ 70#)<br>Taper Roller Bearing (80#) |
| 9   | 蝸桿                             | Worm Shaft                                             |
| 10  | 單圓鍵                            | Key                                                    |
| 11  | 蝸輪                             | Worm Wheel                                             |
| 12  | 滾錐軸承                           | Taper Roller Bearing                                   |
| 13  | 六角承窩頭螺絲                        | Hex Screw                                              |
| 14  | 出力軸蓋                           | Output Shaft Cover                                     |
| 15  | 牛油嘴                            | Fittings                                               |
| 16  | 非石棉墊片                          | Asbestos Free Gasket                                   |
| 17  | 油鏡                             | Oil Gauge                                              |
| 18  | 螺桿                             | Screw                                                  |

# SCREW JACK REDUCER SERIES 螺旋升降器減速機系列

## MODEL : VJ

Note:

- 請參考螺桿端尺寸表。  
Please refer to dimension of screw end.
- 行程 Route = H-H1-B



unit: mm

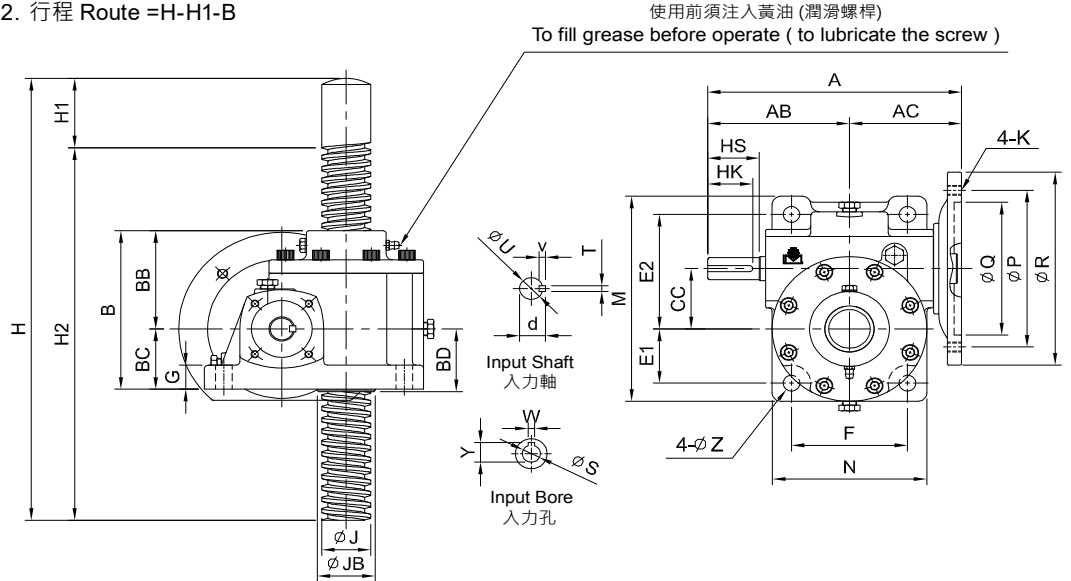
| 型號<br>Model | 減速比<br>Ratio | 馬力<br>HP   | A   | AB  | B   | BB  | BC | BD   | CC | 腳座 Foot Stock |     |     |     |     |    | 入力軸 Input Shaft |    |    |    | φJ<br>螺桿<br>Screw | JB     | 螺距<br>Pitch | H1<br>Note 1 | 重量<br>Weight<br>(kg) | 油量<br>Oil<br>(C.C.) |        |
|-------------|--------------|------------|-----|-----|-----|-----|----|------|----|---------------|-----|-----|-----|-----|----|-----------------|----|----|----|-------------------|--------|-------------|--------------|----------------------|---------------------|--------|
|             |              |            |     |     |     |     |    |      |    | E1            | E2  | F   | M   | N   | G  | Z               | HS | U  | d  |                   |        |             |              |                      |                     | TxVxHK |
| 35          | 5            | 1/4<br>1/2 | 170 | 85  | 110 | 70  | 40 | 42   | 35 | 38            | 73  | 66  | 135 | 90  | 16 | 11              | 30 | 15 | 17 | 5x5x25            | 1"     | 30          | P=5          | 50                   | 4.1                 | 205    |
|             | 10           |            |     |     |     |     |    |      |    | 42            | 83  | 80  | 155 | 110 | 18 | 11              | 40 | 18 | 20 | 5x5x35            |        |             |              |                      |                     |        |
|             | 20           |            |     |     |     |     |    |      |    | 42            | 83  | 80  | 155 | 110 | 18 | 11              | 40 | 18 | 20 | 5x5x35            |        |             |              |                      |                     |        |
| 40          | 6            | 1/4<br>1/2 | 220 | 110 | 130 | 80  | 50 | 52   | 40 | 42            | 83  | 80  | 155 | 110 | 18 | 11              | 40 | 18 | 20 | 5x5x35            | 1 1/4" | 40          | P=6          | 60                   | 7.5                 | 350    |
|             | 12           |            |     |     |     |     |    |      |    | 42            | 83  | 80  | 155 | 110 | 18 | 11              | 40 | 18 | 20 | 5x5x35            |        |             |              |                      |                     |        |
| 50          | 6            | 1/2<br>1   | 220 | 110 | 130 | 80  | 50 | 52   | 50 | 45            | 95  | 90  | 170 | 120 | 20 | 13              | 40 | 18 | 20 | 5x5x35            | 1 1/2" | 45          | P=6          | 70                   | 9                   | 580    |
|             | 12           |            |     |     |     |     |    |      |    | 45            | 95  | 90  | 170 | 120 | 20 | 13              | 40 | 18 | 20 | 5x5x35            |        |             |              |                      |                     |        |
| 60          | 8            | 1<br>2     | 278 | 139 | 160 | 100 | 60 | 62   | 60 | 70            | 120 | 110 | 230 | 148 | 22 | 17              | 45 | 25 | 28 | 7x7x40            | 2"     | 60          | P=8          | 70                   | 16                  | 640    |
|             | 16           |            |     |     |     |     |    |      |    | 70            | 120 | 110 | 230 | 148 | 22 | 17              | 45 | 25 | 28 | 7x7x40            |        |             |              |                      |                     |        |
| 70          | 10           | 1<br>2     | 318 | 159 | 180 | 110 | 70 | 72   | 70 | 75            | 135 | 140 | 250 | 178 | 25 | 17              | 50 | 28 | 31 | 7x7x45            | 2 1/2" | 75          | P=10         | 80                   | 26                  | 980    |
|             | 20           |            |     |     |     |     |    |      |    | 75            | 135 | 140 | 250 | 178 | 25 | 17              | 50 | 28 | 31 | 7x7x45            |        |             |              |                      |                     |        |
| 80          | 12           | 2<br>2     | 360 | 180 | 210 | 130 | 80 | 82.5 | 80 | 90            | 155 | 160 | 295 | 210 | 28 | 21              | 50 | 28 | 31 | 7x7x45            | 75mm   | 90          | P=12         | 80                   | 45                  | 1,200  |
|             | 18           |            |     |     |     |     |    |      |    | 90            | 155 | 160 | 295 | 210 | 28 | 21              | 50 | 28 | 31 | 7x7x45            |        |             |              |                      |                     |        |

# MODEL : VJM



**Note:**

- 請參考螺桿端尺寸表。  
Please refer to dimension of screw end.
- 行程 Route =H-H1-B



unit: mm

| 型號<br>Model | 減速比<br>Ratio | 馬力<br>HP   | A   | AB   | AC  | B   | BB  | BC | BD   | CC | 馬達盤 Motor Flang |            |            |            | 腳座 Foot Stock |     |     |     |     |    |    |
|-------------|--------------|------------|-----|------|-----|-----|-----|----|------|----|-----------------|------------|------------|------------|---------------|-----|-----|-----|-----|----|----|
|             |              |            |     |      |     |     |     |    |      |    | P               | Q          | R          | K          | E1            | E2  | F   | M   | N   | G  | Z  |
| 35          | 5            | 1/4<br>1/2 | 167 | 95.3 | 72  | 110 | 70  | 40 | 42   | 35 | 130             | 110        | 160        | M8         | 38            | 73  | 66  | 135 | 90  | 16 | 11 |
|             | 10           |            |     |      |     |     |     |    |      |    |                 |            |            |            |               |     |     |     |     |    |    |
|             | 20           |            |     |      |     |     |     |    |      |    |                 |            |            |            |               |     |     |     |     |    |    |
| 40          | 6            | 1/4<br>1/2 | 196 | 110  | 86  | 130 | 80  | 50 | 52   | 40 | 130             | 110        | 160        | M8         | 42            | 83  | 80  | 155 | 110 | 18 | 11 |
|             | 12           |            |     |      |     |     |     |    |      |    |                 |            |            |            |               |     |     |     |     |    |    |
|             | 24           |            |     |      |     |     |     |    |      |    |                 |            |            |            |               |     |     |     |     |    |    |
| 50          | 6            | 1/2<br>1   | 197 | 110  | 87  | 130 | 80  | 50 | 52   | 50 | 130             | 110        | 160        | M8<br>M10  | 45            | 95  | 90  | 170 | 120 | 20 | 13 |
|             | 12           |            |     |      |     |     |     |    |      |    |                 |            |            |            |               |     |     |     |     |    |    |
|             | 24           |            |     |      |     |     |     |    |      |    |                 |            |            |            |               |     |     |     |     |    |    |
| 60          | 8            | 1<br>2     | 242 | 139  | 103 | 160 | 100 | 60 | 62   | 60 | 165             | 130        | 200        | M10        | 70            | 120 | 110 | 230 | 148 | 22 | 17 |
|             | 16           |            |     |      |     |     |     |    |      |    |                 |            |            |            |               |     |     |     |     |    |    |
|             | 32           |            |     |      |     |     |     |    |      |    |                 |            |            |            |               |     |     |     |     |    |    |
| 70          | 10           | 1<br>2     | 277 | 159  | 118 | 180 | 110 | 70 | 72   | 70 | 165             | 130        | 200        | M10        | 75            | 135 | 140 | 250 | 178 | 25 | 17 |
|             | 20           |            |     |      |     |     |     |    |      |    |                 |            |            |            |               |     |     |     |     |    |    |
|             | 40           |            |     |      |     |     |     |    |      |    |                 |            |            |            |               |     |     |     |     |    |    |
| 80          | 12           | 2<br>3     | 319 | 180  | 139 | 210 | 130 | 80 | 82.5 | 80 | 165<br>215      | 130<br>180 | 200<br>250 | M10<br>M12 | 90            | 155 | 160 | 295 | 210 | 28 | 21 |
|             | 18           |            |     |      |     |     |     |    |      |    |                 |            |            |            |               |     |     |     |     |    |    |
|             | 36           |            |     |      |     |     |     |    |      |    |                 |            |            |            |               |     |     |     |     |    |    |

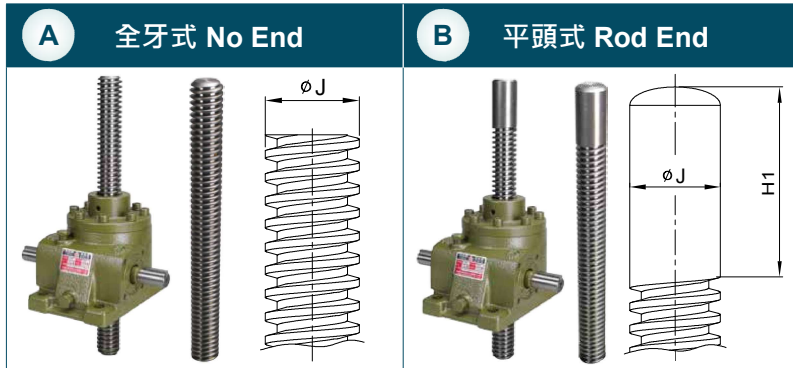
| 型號<br>Model | 減速比<br>Ratio | 馬力<br>HP   | 入力軸 Input Shaft |    |    |        | 入力孔 Input Bore |      |    | ØJ<br>螺桿 Screw | JB | 螺距<br>Pitch | H1<br>Note 1 | 重量 Weight<br>(kg) | 油量 Oil<br>(C.C.) |
|-------------|--------------|------------|-----------------|----|----|--------|----------------|------|----|----------------|----|-------------|--------------|-------------------|------------------|
|             |              |            | HS              | U  | d  | TxVxHK | W              | Y    | S  |                |    |             |              |                   |                  |
| 35          | 5            | 1/4<br>1/2 | 30              | 15 | 17 | 5x5x25 | 4              | 12.7 | 11 | 1"             | 30 | P=5         | 50           | 4.1               | 205              |
|             | 10           |            |                 |    |    |        |                |      |    |                |    |             |              |                   |                  |
|             | 20           |            |                 |    |    |        |                |      |    |                |    |             |              |                   |                  |
| 40          | 6            | 1/4<br>1/2 | 40              | 18 | 20 | 5x5x35 | 4              | 12.7 | 11 | 1 1/4"         | 40 | P=6         | 60           | 7.5               | 350              |
|             | 12           |            |                 |    |    |        |                |      |    |                |    |             |              |                   |                  |
|             | 24           |            |                 |    |    |        |                |      |    |                |    |             |              |                   |                  |
| 50          | 6            | 1/2<br>1   | 40              | 18 | 20 | 5x5x35 | 5              | 16.3 | 14 | 1 1/2"         | 45 | P=6         | 70           | 9                 | 580              |
|             | 12           |            |                 |    |    |        |                |      |    |                |    |             |              |                   |                  |
|             | 24           |            |                 |    |    |        |                |      |    |                |    |             |              |                   |                  |
| 60          | 8            | 1<br>2     | 45              | 25 | 28 | 7x7x40 | 6              | 21.8 | 19 | 2"             | 60 | P=8         | 70           | 16                | 640              |
|             | 16           |            |                 |    |    |        |                |      |    |                |    |             |              |                   |                  |
|             | 32           |            |                 |    |    |        |                |      |    |                |    |             |              |                   |                  |
| 70          | 10           | 1<br>2     | 50              | 28 | 31 | 7x7x45 | 6              | 21.8 | 19 | 2 1/2"         | 75 | P=10        | 80           | 26                | 980              |
|             | 20           |            |                 |    |    |        |                |      |    |                |    |             |              |                   |                  |
|             | 40           |            |                 |    |    |        |                |      |    |                |    |             |              |                   |                  |
| 80          | 12           | 2<br>3     | 50              | 28 | 31 | 7x7x45 | 8              | 27.3 | 24 | 75mm           | 90 | P=12        | 80           | 45                | 1,200            |
|             | 18           |            |                 |    |    |        |                |      |    |                |    |             |              |                   |                  |
|             | 36           |            |                 |    |    |        |                |      |    |                |    |             |              |                   |                  |



## 選配品 Optional Accessories (適用 VJ 系列)

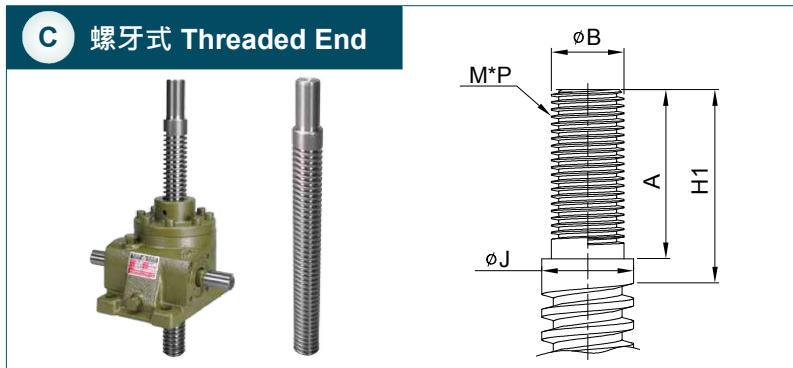
### 螺桿 Screw End

螺桿桿端形式 Type of Screw End

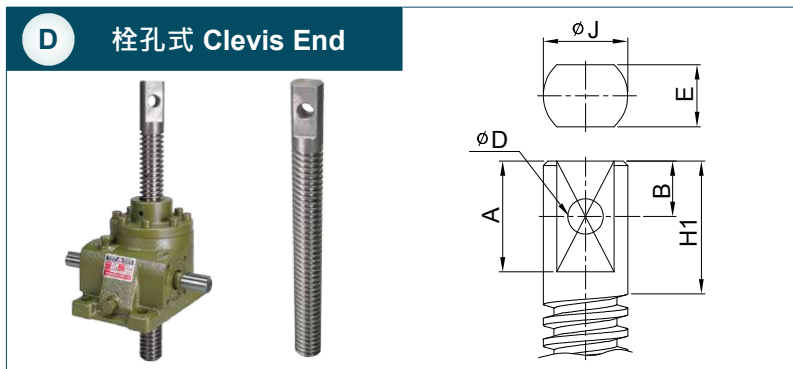


螺桿桿端尺寸 Dimension of Screw End

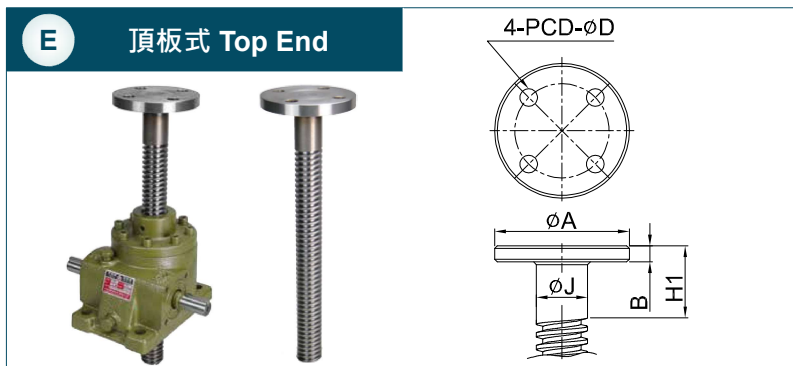
| 型號 Model | $\phi J$ | H1 |
|----------|----------|----|
| 35       | 1"       | 50 |
| 40       | 1 1/4"   | 60 |
| 50       | 1 1/2"   | 70 |
| 60       | 2"       | 70 |
| 70       | 2 1/2"   | 80 |
| 80       | 75mm     | 80 |



| 型號 Model | $\phi J$ | A  | $\phi B$ | H1 | M*P      |
|----------|----------|----|----------|----|----------|
| 35       | 1"       | 40 | 20       | 50 | M20*P1.0 |
| 40       | 1 1/4"   | 50 | 25       | 60 | M25*P1.5 |
| 50       | 1 1/2"   | 50 | 30       | 70 | M30*P1.5 |
| 60       | 2"       | 60 | 40       | 70 | M40*P1.5 |
| 70       | 2 1/2"   | 70 | 50       | 80 | M50*P1.5 |
| 80       | 75mm     | 75 | 60       | 80 | M60*P2.0 |



| 型號 Model | $\phi J$ | A  | B  | H1 | E  | $\phi D$ |
|----------|----------|----|----|----|----|----------|
| 35       | 1"       | 40 | 20 | 50 | 18 | 12       |
| 40       | 1 1/4"   | 50 | 25 | 60 | 24 | 14       |
| 50       | 1 1/2"   | 50 | 25 | 70 | 28 | 16       |
| 60       | 2"       | 60 | 30 | 70 | 38 | 20       |
| 70       | 2 1/2"   | 70 | 35 | 80 | 50 | 25       |
| 80       | 75mm     | 76 | 38 | 80 | 60 | 30       |



| 型號 Model | $\phi J$ | A   | B  | H1 | $\phi D$ | PCD |
|----------|----------|-----|----|----|----------|-----|
| 35       | 1"       | 84  | 10 | 50 | 11       | 60  |
| 40       | 1 1/4"   | 84  | 10 | 60 | 11       | 60  |
| 50       | 1 1/2"   | 99  | 13 | 70 | 13       | 75  |
| 60       | 2"       | 118 | 15 | 70 | 15       | 90  |
| 70       | 2 1/2"   | 138 | 21 | 80 | 17       | 105 |
| 80       | 75mm     | 158 | 25 | 80 | 21       | 120 |

## 螺桿長度 Length of The Screw

| 螺桿直徑<br>Screw Dia. ØJ | 螺桿牙距<br>Pitch<br>P(mm) | 螺桿長度 Length of the Screw mm<br>H (標準螺桿長度 · 亦可訂製其他尺寸 Standard length of the screw, other dimensions also available) |     |     |     |      |      |      |         |
|-----------------------|------------------------|--------------------------------------------------------------------------------------------------------------------|-----|-----|-----|------|------|------|---------|
|                       |                        |                                                                                                                    |     |     |     |      |      |      | 此尺寸須另訂購 |
| 1"                    | 5                      | 400                                                                                                                | -   | 600 | 800 | 1000 | 1200 | 1500 | 2000    |
| 1 1/4"                | 6                      | 400                                                                                                                | -   | 600 | 800 | 1000 | 1200 | 1500 | 2000    |
| 1 1/2"                | 6                      | 400                                                                                                                | -   | 600 | 800 | 1000 | 1200 | 1500 | 2000    |
| 2"                    | 8                      | -                                                                                                                  | 500 | 600 | 800 | 1000 | 1200 | 1500 | 2000    |
| 2 1/2"                | 10                     | -                                                                                                                  | -   | 600 | 800 | 1000 | 1200 | 1500 | 2000    |
| 75m/m                 | 12                     | -                                                                                                                  | -   | 600 | 800 | 1000 | 1200 | 1500 | 2000    |

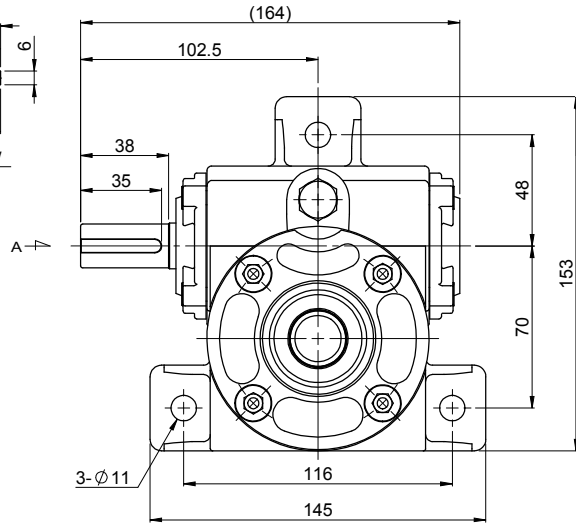
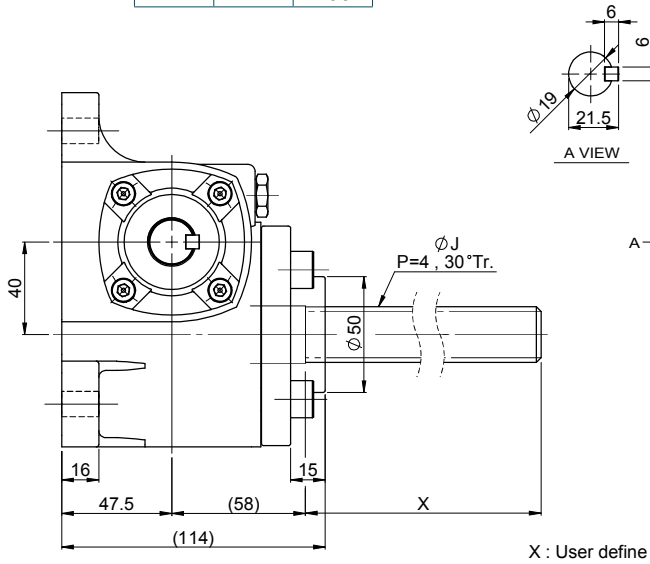
# SCREW JACK REDUCER SERIES

## 螺旋升降器減速機系列

### MODEL : VTW40

RATIO : 5, 10, 15, 20, 30, 40

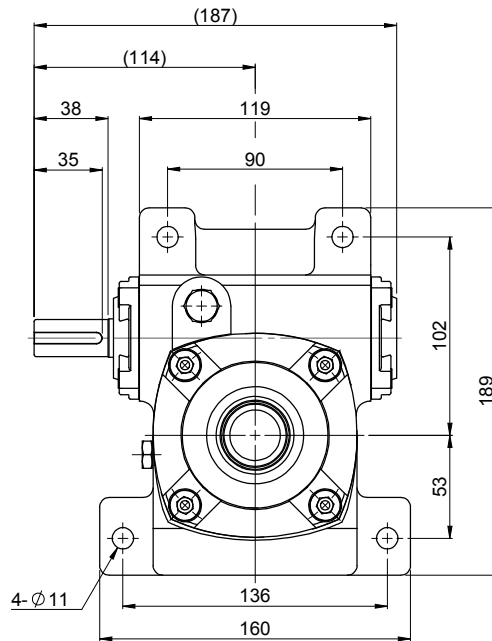
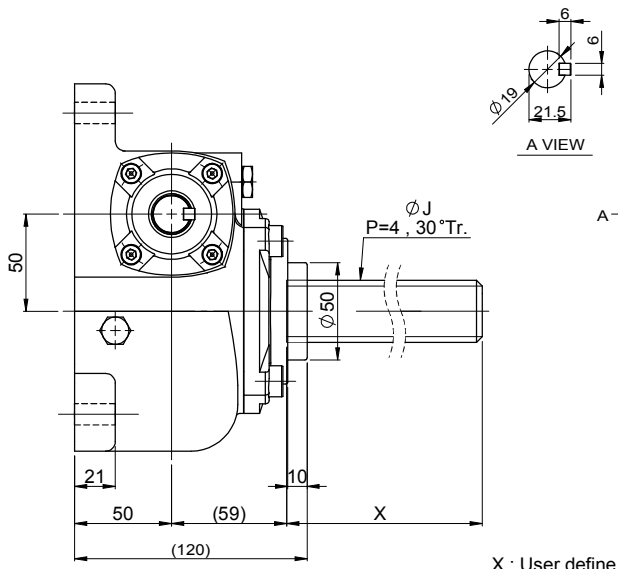
| 型號<br>Model | ØJ | X   |
|-------------|----|-----|
| 40          | 24 | 310 |
|             |    | 365 |
|             | 32 | 360 |
|             |    | 460 |



### MODEL : VTW50

RATIO : 5, 30

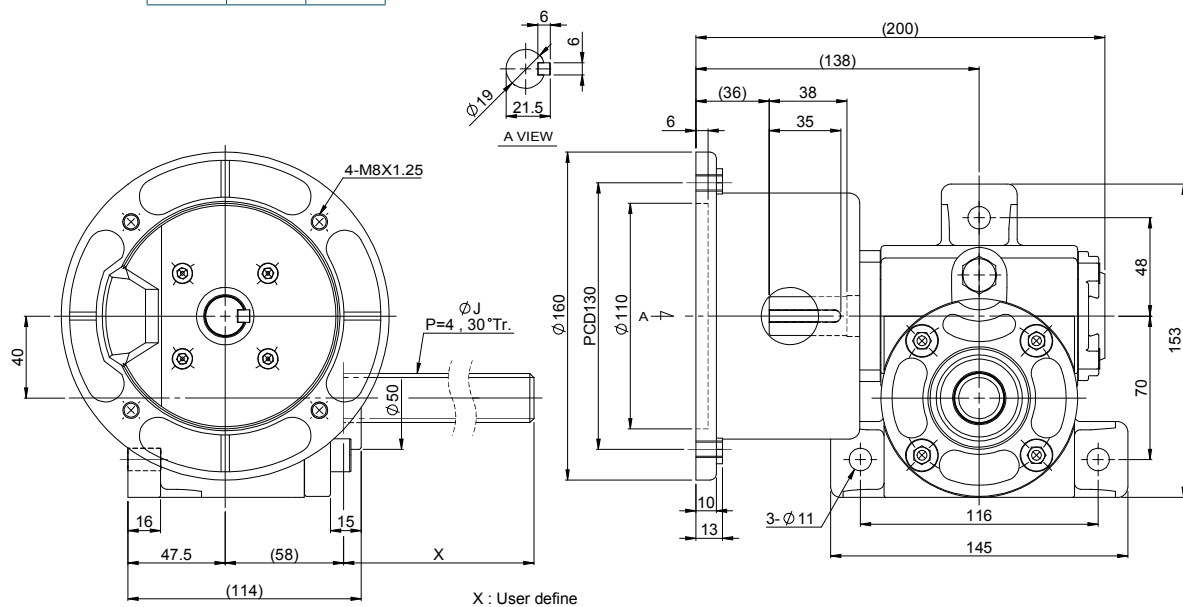
| 型號<br>Model | ØJ | X   |
|-------------|----|-----|
| 50          | 32 | 360 |
|             |    | 460 |



## MODEL : VTM40

RATIO : 5, 10, 15, 20, 30, 40

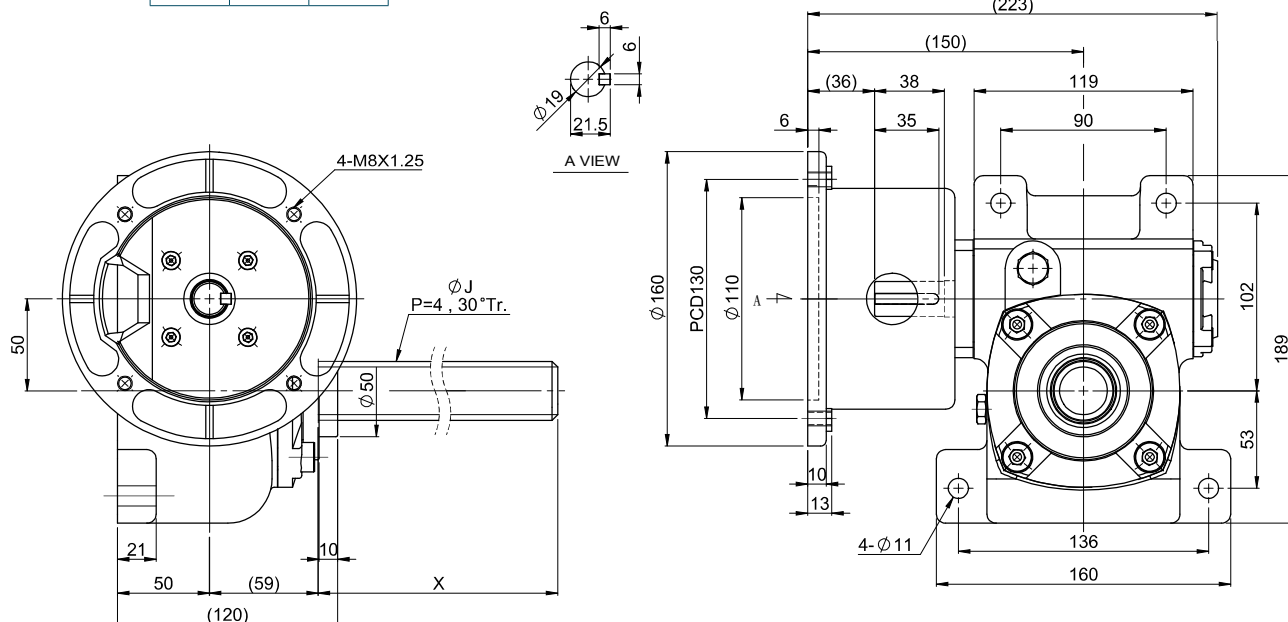
| 型號<br>Model | ØJ | X   |
|-------------|----|-----|
| 40          | 24 | 310 |
|             |    | 365 |
|             | 32 | 360 |
|             |    | 460 |



## MODEL : VTM50

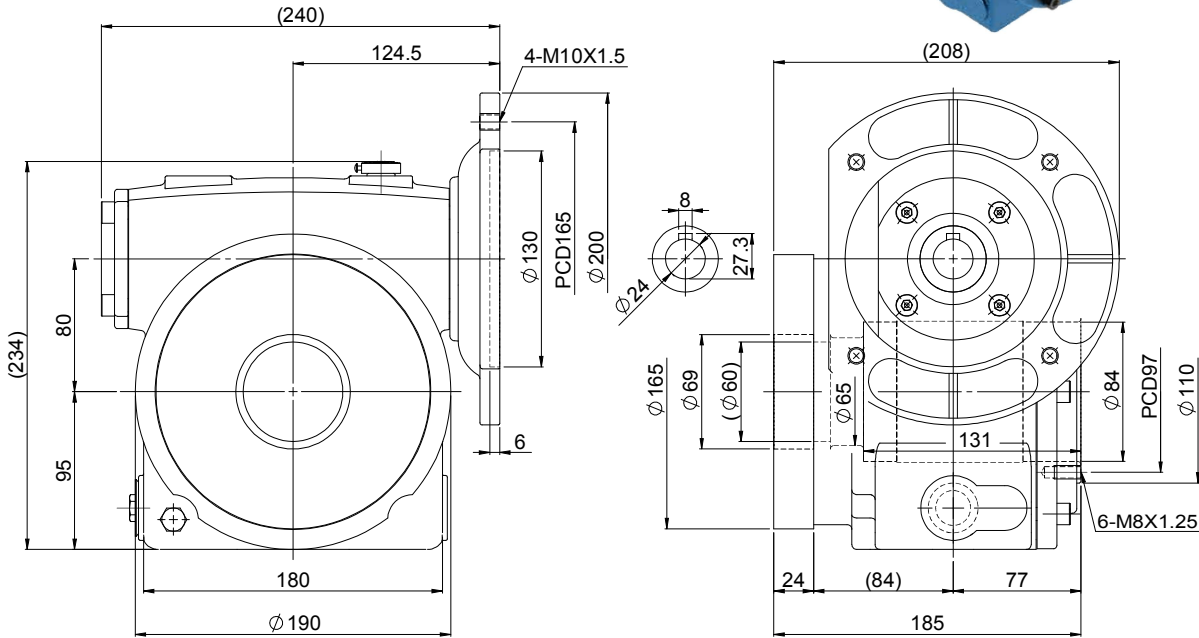
RATIO : 5, 30

| 型號<br>Model | ØJ | X   |
|-------------|----|-----|
| 50          | 32 | 360 |
|             |    | 460 |



MODEL : POS80

RATIO : 10, 15



## Indication of Model Numbers

### 機種型號表示

**POS** **80** - **10**

| 減速機型<br>Type | 型號<br>Model | 減速比<br>Ratio |
|--------------|-------------|--------------|
| POS          | 80          | 10           |
|              |             | 15           |

