

BGT



■ 實際減速比對照表 Actual Ratio Table

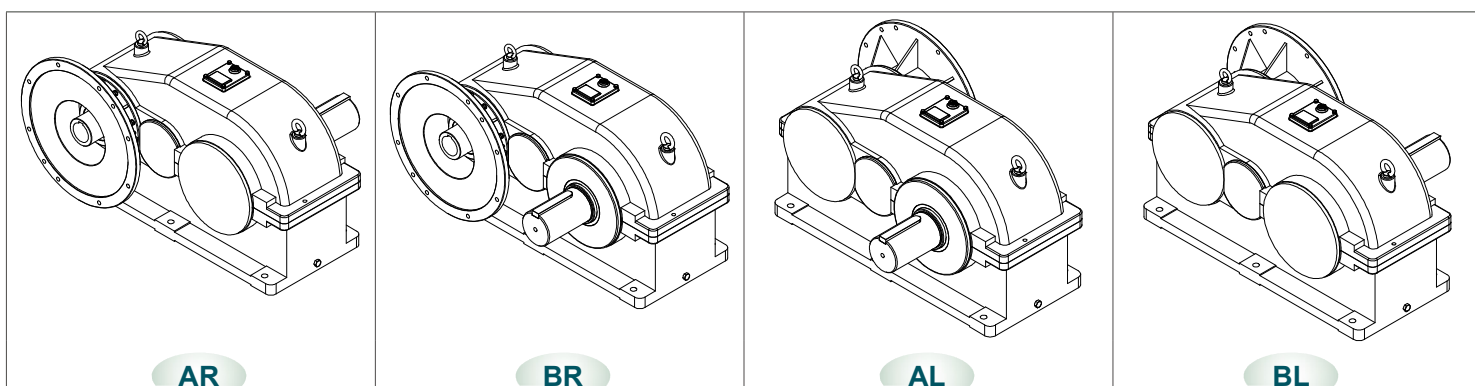
型號 Model	功率 Power HP (4P)	減速比 Ratio	實際減速比 Actual Ratio
150	75 / 100	15	14.36
		20	20.8
		30	29.36
	125	10	10.147
		20	20.8
		30	29.36
150	10	10.147	
	20	20.45	
	30	29.36	

Indication of Model Numbers

機種型號表示

BGT	150	- 20 -	125	- M -	A	R
減速機型 Type	型號 Model	減速比 Ratio	馬力 Horse Power	入力表示 Input	安裝方向 Installation Direction	軸向 Shaft Direction
BGT	150	10 15 20 30	75HP 100HP 125HP 150HP (4P)	M: 馬達直結式 Motor Direct-Coupling D: 入力軸式 Input Shaft B: 入力法蘭式 Input Flange	A B	R: 右軸 Right Shaft L: 左軸 Left Shaft

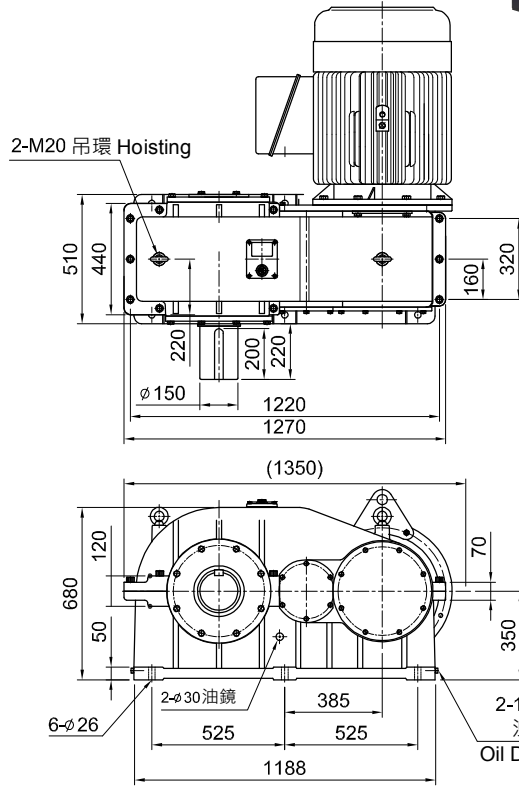
■ 安裝方向 Installation Direction



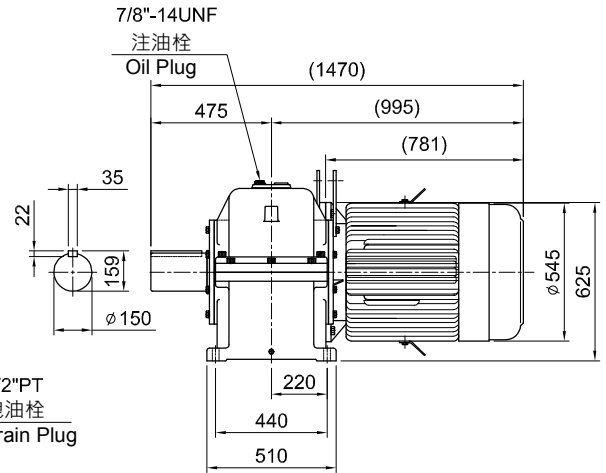
MODEL : BGT150 □ M

RATIO : 10, 15, 20, 30

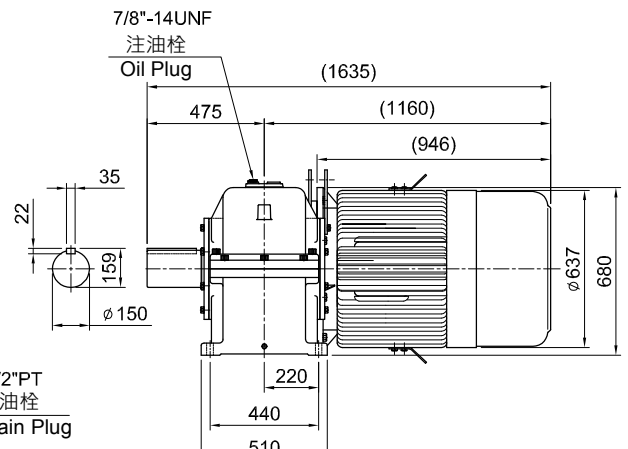
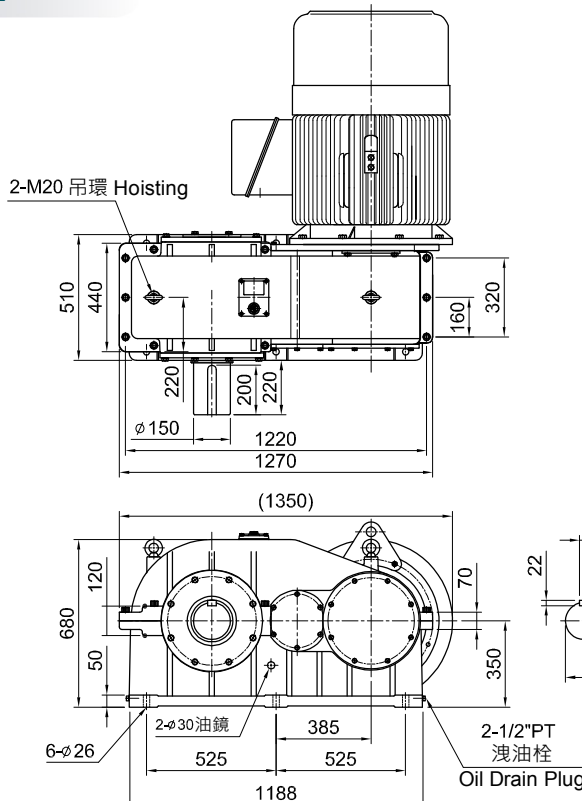
125HP x 4P



◆ 大型馬達 (75HP、100HP、125HP、150HP) 軸心處若有排油孔，會產生漏油現象，建議使用 BGT150 □ B 自裝式或 BGT150 □ D 雙軸式。



150HP x 4P

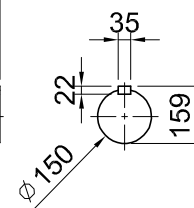
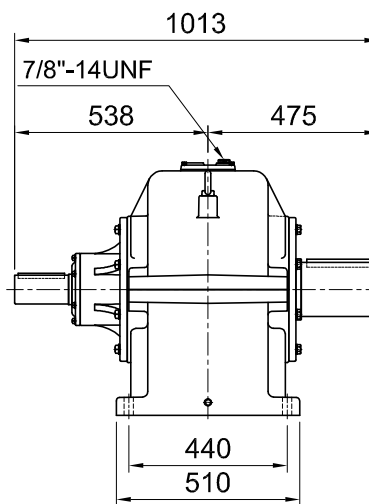
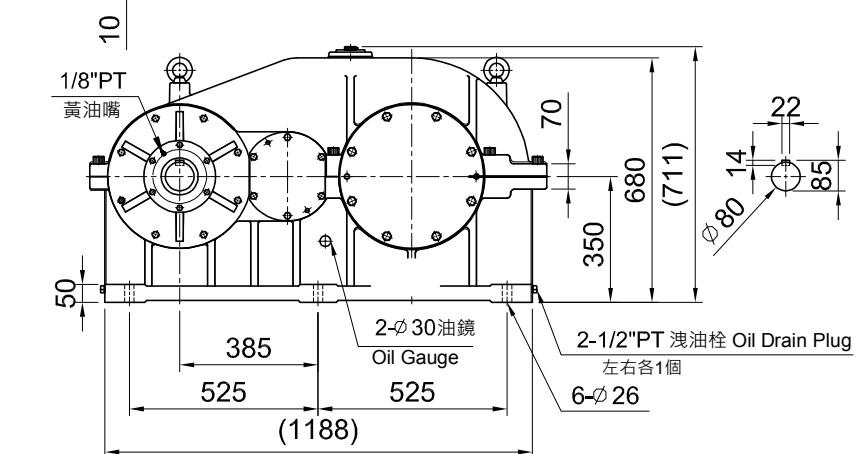
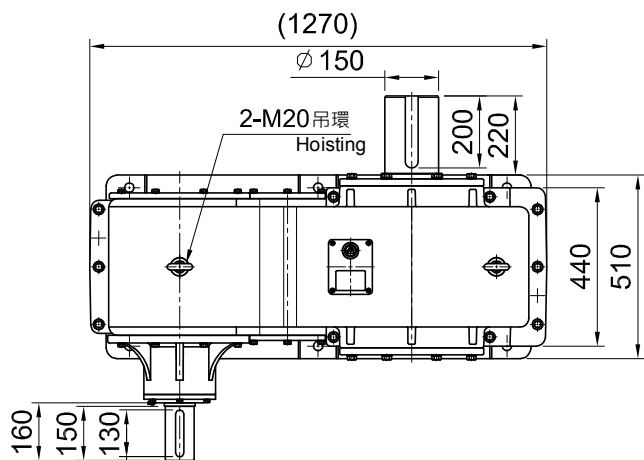
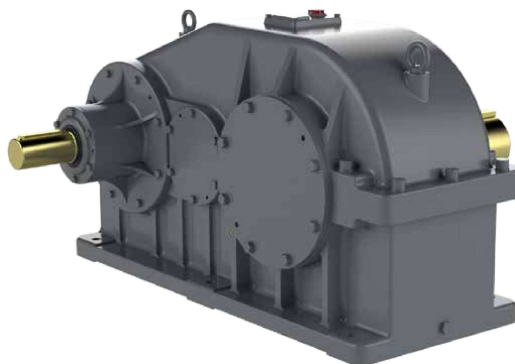


GEARBOX SERIES 大型齒箱系列

MODEL : BGT150 □ D

RATIO : 10, 15, 20, 30

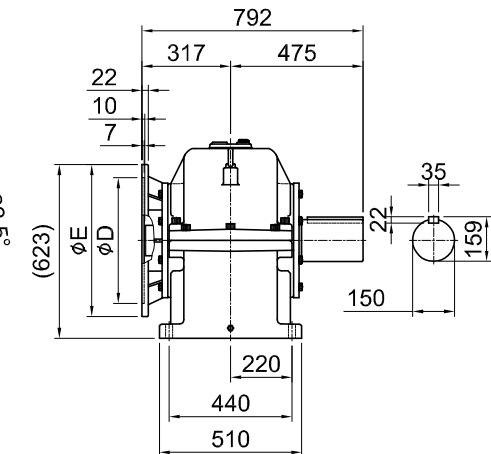
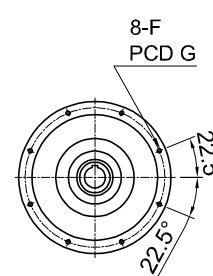
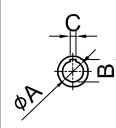
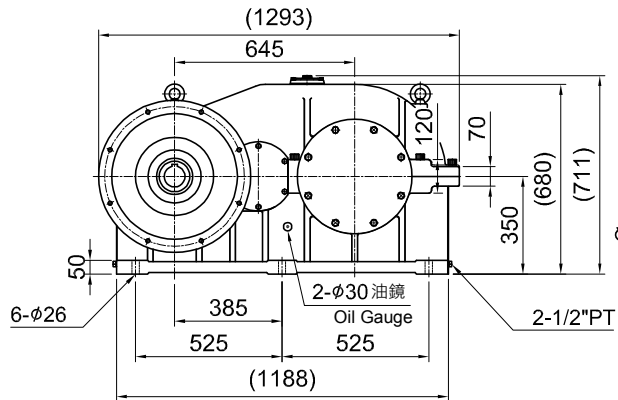
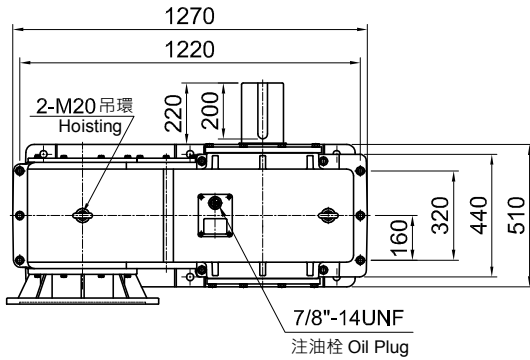
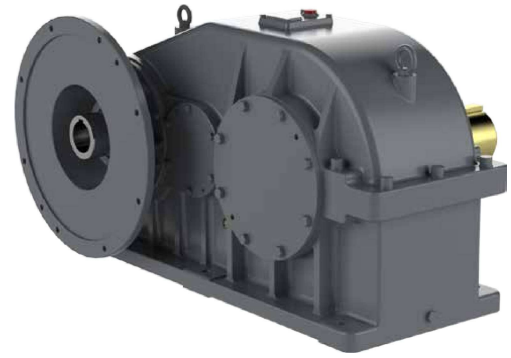
馬力 (HP) : 75, 100, 125, 150



MODEL : BGT150 B

RATIO : 10, 15, 20, 30

馬力 (HP) : 75, 100, 125, 150



unit: mm

馬力 HP	A	B	C	D	E	F	G	重量 Weight (kg)
75	65	69.3	18	450	545	M16	500	
100	75	79.9	20	450	545	M16	500	
125	75	79.9	20	450	545	M16	500	
150	85	90.4	22	550	645	M20	600	

GEAR REDUCER SERIES

齒輪減速機一般故障原因及改善方法

Solutions and Reasons for Gear Reducer General Faults

故障情形 Fault Description	故障原因 Reasons	解決方法 Solutions
減速機過熱 Over-heating	<ul style="list-style-type: none"> ◆ 超負荷運轉 ◆ 油封過度磨擦 ◆ 出力軸與傳動裝置連接不當 ◆ 衝擊荷重大 ◆ Overload. ◆ Over friction of oil seal. ◆ Improper connection between driving shaft and the transmission device. ◆ Large impact loading. 	<ul style="list-style-type: none"> ◆ 調整至適當負荷 ◆ 在油封處滴潤滑油 ◆ 調整至適當位置 ◆ 更換較大型號減速機 ◆ Adjust to proper loading. ◆ Drop lubricat at oil seal. ◆ Adjust to proper position. ◆ Use larger reduction gears.
減速機雜音 Noise	<ul style="list-style-type: none"> ◆ 超負荷運轉 ◆ 軸承損傷或間隙過大 ◆ 潤滑油不足或劣化 ◆ 出力軸與傳動裝置連接不當 ◆ 螺栓鬆脫 ◆ 傳動裝置固定不良 ◆ Overload. ◆ Bearing damaged or too large clearance. ◆ Lubricant oil shortage or deterioration. ◆ Shaft and the transmission device improper connection between driving. ◆ Bolt loose. ◆ Improper installation of transmission device. 	<ul style="list-style-type: none"> ◆ 調整至適當負荷 ◆ 更換軸承 ◆ 依指示加入適量潤滑油 ◆ 調整至適當位置 ◆ 旋緊螺栓 ◆ 傳動裝置固定 ◆ Adjust to proper loading. ◆ Replace bearing. ◆ Fill in adequate lubricant oil as indication. ◆ Adjust to proper position. ◆ Tighten bolt. ◆ Fix transmission device properly.
漏油 Oil leakage	<ul style="list-style-type: none"> ◆ 油封損傷 ◆ 油量過多 ◆ 螺絲鬆脫 ◆ 外殼破裂 ◆ Oil seal damaged. ◆ Too much oil. ◆ Screw loose. ◆ Outer shell fractured. 	<ul style="list-style-type: none"> ◆ 更換油封 ◆ 依指示加入適量潤滑油 ◆ 旋緊螺栓 ◆ 更換外殼 ◆ Replace oil seal. ◆ Fill in adequate lubricant oil as dication. ◆ Tighten screw. ◆ Replace outer shell.
出力軸不轉 Output shaft cannot rotate	<ul style="list-style-type: none"> ◆ 超負荷運轉 ◆ 軸承損傷 ◆ 異物嵌入 ◆ 齒輪磨損 ◆ 馬達損壞 ◆ 配線錯誤 ◆ 衝擊荷重過大 ◆ Overload. ◆ Bearing damaged. ◆ Invasion by foreign objects. ◆ Gear worn-out. ◆ Motor out of order. ◆ Incorrect wiring. ◆ Large impact loading. 	<ul style="list-style-type: none"> ◆ 調整至適當負荷 ◆ 更換軸承 ◆ 取出異物 ◆ 更換齒輪 ◆ 修復馬達 ◆ 依指示配線 ◆ 更換較大型號減速機 ◆ Adjust to proper loading. ◆ Replace bearing ◆ Take out foreign objects. ◆ Replace gear. ◆ Repair motor ◆ Wiring as indication. ◆ Use larger sized gear reducer.

以上所列為一般故障原因，如有其它故障情形時，請與本公司聯絡。

The above items are general fault descriptions. In case of other kinds of faults, please contact with us.