

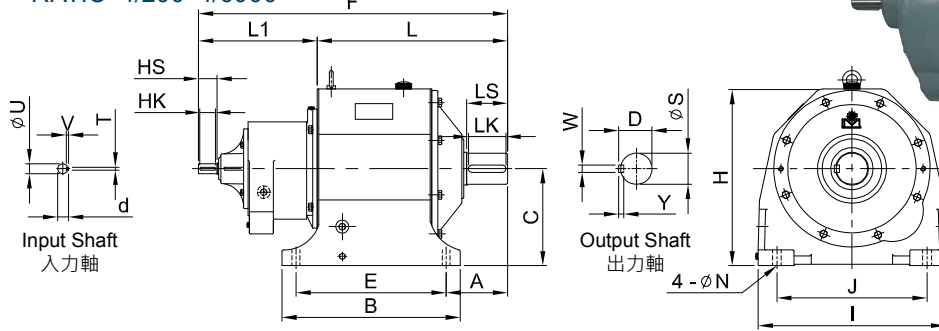
# VERTICAL REDUCER SERIES

## 多速比多段齒輪減速機系列

### MODEL : LSHD

臥式多速比雙軸減速機 Horizontal Multi-Stage & Double Shaft Reducer

RATIO : 1/200~1/6000



unit: mm

型號 Model	L	L1	F	A	C	H	入力軸 Input Shaft				腳座 Foot Stock					出力軸 Output Shaft				重量 Weight (kg)	油量 Oil (ℓ)
							U	HS	TxVxHK	d	E	J	B	I	N	S	LS	D	WxYxLK		
406	226	190	416	81	127	227	16	35	5x5x25	18	170	180	210	230	15	32	55	35	10x8x45	29	1.3
408	259	243	502	87	145	253	19	40	5x5x30	21	205	195	240	260	15	38	60	41	10x8x50	41	2
508	259	190	449	87	145	253	16	35	5x5x25	18	205	195	240	260	15	38	60	41	10x8x50	41	2
410	283		575	92	164	289															
410S	273	292	565			286	24	50	7x7x40	27	215	215	265	295	19	42	65	45	12x8x55	58	3
510	283	268	551	92	164	289															
510S	273	266	539			286	19	40	5x5x30	21	215	215	265	295	19	42	65	45	12x8x55	56	3
610	306		521	92	164	289															
610S	296	215	511			286	16	35	5x5x25	18	215	215	265	295	19	42	65	45	12x8x55	61	3
412	325			109	192																
412S	298	292	617	105	164	332	24	50	7x7x40	27	215	215	265	295	19	48	75	51	12x8x65	78	4
512	337			109	192																
512S	323	292	629	105	164	332	24	50	7x7x40	27	215	215	265	295	19	48	75	51	12x8x65	69	3.5
612	337			109	192																
612S	323	268	605	105	164	332	19	40	5x5x30	21	215	215	265	295	19	48	75	51	12x8x65	83	4
414	390			130	210	385															
414S	387	329	719	130	210	377	28	55	7x7x45	31	310	310	370	400	22	62	85	66	15x10x75	74	3.5
514	402			130	210	385															
514S	399	310	712	130	210	377	24	50	7x7x40	27	310	310	370	400	22	62	85	66	15x10x75	147	8
614	402			130	210	385															
614S	399	310	712	130	210	377	19	40	5x5x30	21	310	310	370	400	22	62	85	66	15x10x75	139	8
416	471	329	804	157	245	445	28	55	7x7x45	31	360	360	430	450	25	76	100	80.5	20x12x90	141	8
516	492	329	817	157	245	445	28	55	7x7x45	31	360	360	430	450	25	76	100	80.5	20x12x90	132	8
616	492	349	837	157	245	445	24	50	7x7x40	27	360	360	430	450	25	76	100	80.5	20x12x90	145	8
417	511	379	890	178	280	505	32	55	10x8x45	35	380	420	460	530	25	80	110	84.5	20x12x100	133	8
517	511	370	881	178	280	505	28	55	7x7x45	31	380	420	460	530	25	80	110	84.5	20x12x100	194	12
617	526	353	879	178	280	505	32	60	10x8x50	35	380	420	460	530	25	80	110	84.5	20x12x100	212	12
418	607	382	993	196	310	565	32	60	10x8x50	35	480	480	570	600	28	100	130	106.5	24x16x120	213	12
518	628	382	1014	196	310	565	28	55	7x7x45	31	480	480	570	600	28	100	130	106.5	24x16x120	272	18
618	628	370	998	196	310	565	32	60	10x8x50	35	480	480	570	600	28	100	130	106.5	24x16x120	275	18
419	676	451	949	214	380	670	38	65	10x8x55	41	540	500	635	680	28	115	150	124	32x20x140	266	18
519																				402	27
619																				433	27
																				436	27
																				589	37

- 表中 S 表示新尺寸。"S" means new dimension.
- 重量不含馬達及潤滑油。The weight does not include motor and lubricant.